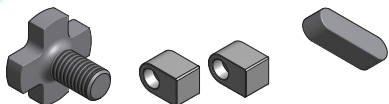


**GRANI PER PORTAFRESE WELDON**
SCREWS FOR END MILL HOLDERS

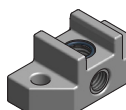
PAG. 303

**ACCESSORI PER PORTAFRESE FISSI E COMBINATI**
SPARE PARTS FOR SHELL AND COMBI MILL HOLDERS

PAG. 304

**RACCORDI PER REFRIGERANTE - HSK - CPT**
*HSK AND CPT COOLING TUBES*DIN
69893DIN ISO
26623-1

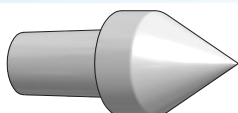
PAG. 306

**BLOCCO D'ARRESTO PER DISTRIBUTORI ROTANTI**
STOP BLOCK FOR OIL HOLDERS

PAG. 306

**DISCHI DI TENUTA PER MANDRINI A FORTE SERRAGGIO**
SEALED CAPS FOR POWER MILLING CHUCKS

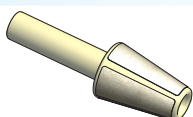
PAG. 307

**CUSPIDI**
TIPS

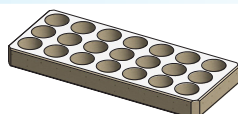
PAG. 307

**ACCESSORI PER CONO MORSE**
MORSE TAPER ACCESSORIES

PAG. 308

**TAMPONI PULITORI**
SPINDLE TAPER WIPERS

PAG. 308

**BASI DI LEGNO PER PINZE ER**
EMPTY RACKS FOR ER COLLETS

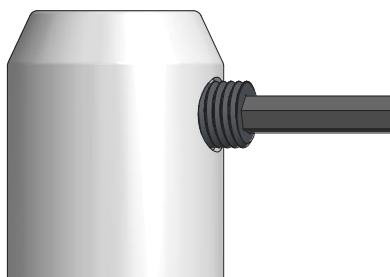
PAG. 309



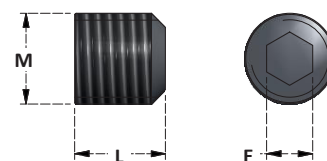
**DIN1835-2**

GR

WE

GRANI PER PORTAFRESE WELDON
SCREWS FOR END MILL HOLDERS WELDONSCHEDA TECNICA
TECHNICAL DATA
WE P. 347**GRANI PER PORTAFRESE WELDON STANDARD***SCREWS FOR STANDARD END MILL HOLDERS WELDON*

Articolo	M	L	E
GR.WE6	M6x1	9	3
GR.WE8	M8x1,25	9	4
GR.WE10	M10x1,5	12	5
GR.WE12-14	M12x1,75	14	6
GR.WE16-18	M14x2	16	6
GR.WE20	M16x2	16	8
GR.WE25	M18x2	20	10
GR.WE32-40	M20x2	20	10
GR.WE50	M24x2	25	12

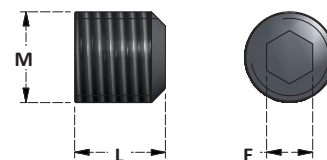


GR

WEC

GRANI PER PORTAFRESE WELDON EXTRACORTI*SCREWS FOR END MILL HOLDERS WELDON WITH STUB LENGHT*

Articolo	M	L	E
GR.WEC12-14	M12x1,75	10	6
GR.WEC16	M14x2	10	6
GR.WEC20	M16x2	10	8
GR.WEC25-32	M16x1	8	10
GR.WEC25	M18x2	12	10
GR.WEC32-40	M20x2	14	10





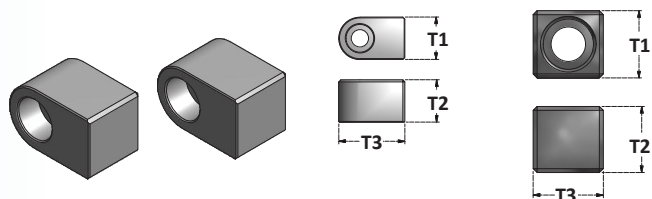
TTR

SCHEDA TECNICA TECHNICAL DATA	
D C	P. 348

SCHEDA TECNICA TECHNICAL DATA	
D S	P. 349

TASSELLI DI TRASCINAMENTO PER PORTAFRESE FISSI*DRIVE KEYS FOR SHELL MILL HOLDERS*

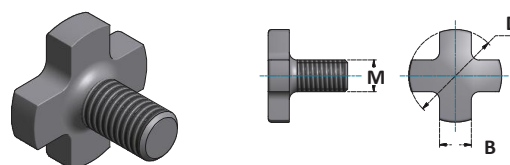
Articolo	T1	T2	T3	fig
TTR.D16	8	8	14	1
TTR.D22	10	10	18	1
TTR.D27	12	12	18	1
TTR.D32	14	14	22	1
TTR.D40	16	16	25	1
TTR.D60	25,4	25	26,5	2

**DIN6367**

VTC

VITI A CROCE PER PORTAFRESE FISSI E COMBI*CROSS SCREWS FOR SHELL AND COMBI MILL HOLDERS*

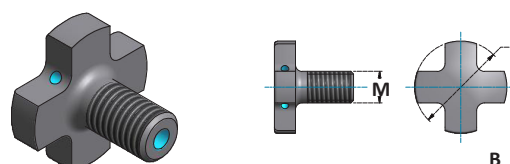
Articolo	M	D	B
VTC.D16	M8	20	8
VTC.D22	M10	28	10
VTC.D27	M12	35	12
VTC.D32	M16	42	16
VTC.D40	M20	52	20
VTC.D60	M30	75	28

**DIN6367**

VTCS

VITI A CROCE CON PASSAGGIO DEL REFRIGERANTE*CROSS SCREWS WITH COOLANT THROUGH*

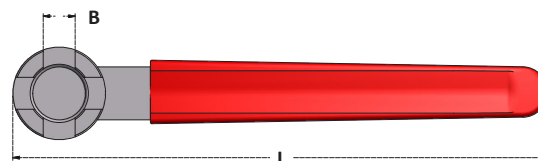
Articolo	M	D	B
VTCS.D16	M8	20	8
VTCS.D22	M10	28	10
VTCS.D27	M12	35	12
VTCS.D32	M16	42	16
VTCS.D40	M20	52	20
VTCS.D60	M30	75	28

**DIN6368**

SP

CHIAVI PER VITI A CROCE*SPANNNERS FOR CROSS SCREWS*

Articolo	B	L
SP16C	8	180
SP22C	10	200
SP27C	12	225
SP32C	16	250
SP40C	20	280
SP60C	28	355



**DIN6366**

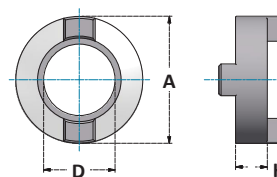
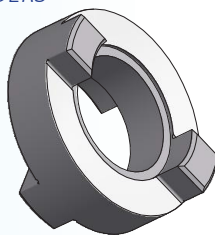
ATR

ANELLI DI TRASCINAMENTO PER MANDRINI COMBI

DRIVE RINGS FOR COMBI SHELL MILL HOLDERS

SCHEDA TECNICA
TECHNICAL DATA
D C | P. 348

Articolo	D	A	H
ATR.D16	16	32	10
ATR.D22	22	40	12
ATR.D27	27	48	12
ATR.D32	32	58	14
ATR.D40	40	70	14

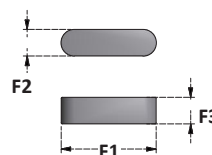
**DIN6885**

CHV

CHIAVETTE DI TRASCINAMENTO PER PORTAFRESE COMBI

DRIVE KEYS FOR COMBI SHELL MILL HOLDERS

Articolo	F1	F2	F3
CHV.D16C	20	4	4
CHV.D22C	25	6	6
CHV.D27C	25	7	7
CHV.D32C	28	8	7
CHV.D40C	32	10	8

**DIN2084**

SC

H

ANELLI DISTANZIALI

SPACING COLLARS

Articolo	A	H
SC16.H1	26	1
SC16.H2	27	2
SC16.H3	27	3
SC16.H4	27	4
SC16.H5	27	5
SC16.H6	27	6
SC16.H10	27	10
SC16.H20	27	20
SC16.H30	27	30

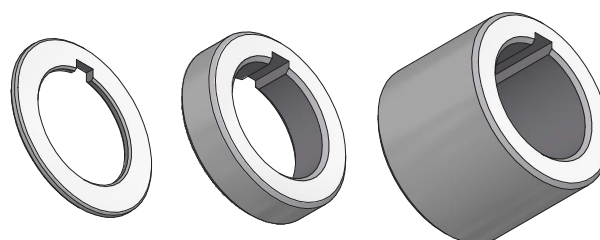
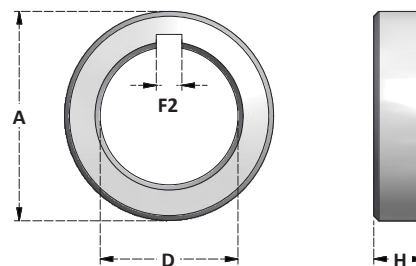
Articolo	A	H
SC22.H1	33	1
SC22.H2	34	2
SC22.H3	34	3
SC22.H4	34	4
SC22.H5	34	5
SC22.H6	34	6
SC22.H10	34	10
SC22.H20	34	20
SC22.H30	34	30
SC22.H60	34	60

Articolo	A	H
SC27.H1	40	1
SC27.H2	41	2
SC27.H3	41	3
SC27.H4	41	4
SC27.H5	41	5
SC27.H6	41	6
SC27.H10	41	10
SC27.H20	41	20
SC27.H30	41	30
SC27.H60	41	60
SC27.H100	41	100

Articolo	A	H
SC32.H1	46	1
SC32.H2	47	2
SC32.H3	47	3
SC32.H4	47	4
SC32.H5	47	5
SC32.H6	47	6
SC32.H10	47	10
SC32.H20	47	20
SC32.H30	47	30
SC32.H60	47	60
SC32.H100	47	100

Articolo	A	H
SC40.H1	54	1
SC40.H2	55	2
SC40.H3	55	3
SC40.H4	55	4
SC40.H5	55	5
SC40.H6	55	6
SC40.H10	55	10
SC40.H20	55	20
SC40.H30	55	30
SC40.H60	55	60
SC40.H100	55	100

Articolo	D	F2
SC16	12	4
SC22	16	6
SC27	22	7
SC32	28	8
SC40	35	10

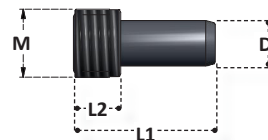




CFM

RACCORDI E CHIAVI PER L'ADDUZIONE DEL REFRIGERANTE*COOLANT TUBES AND WRENCHES***RACCORDI PER HSK***TUBES FOR HSK*

Articolo	M	L1	L2	D	ATTACCO SHANK
HSK40.CFM12	M12	29,5	7,5	8	HSK40
HSK50.CFM16	M16	33	9,5	10	HSK50
HSK63.CFM18	M18	36,5	11,5	12	HSK63
HSK80.CFM20	M20	40	13,5	14	HSK80
HSK100.CFM24	M24	44	15,5	16	HSK100

DIN
69893

NEW

RACCORDI PER CPT*TUBES FOR CPT*

Articolo	M	L1	L2	D	ATTACCO SHANK
CPT40.CFM14	M14x1,5	25	12	6	CPT40
CPT50.CFM16	M16x1,5	28,3	14	7	CPT50
CPT63.CFM20	M20x2	31	15	8	CPT63
CPT80.CFM20	M20x2	31,3	15	10	CPT80

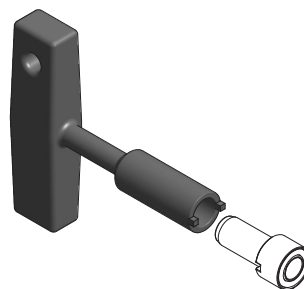
DIN ISO
26623-1

SP

CHIAVI PER RACCORDI PER L'ADDUZIONE DEL REFRIGERANTE*WRENCHES FOR COOLANT TUBES*

Articolo	RACCORDO TUBE
HSK40.SP11	HSK40.CFM12
HSK50.SP15	HSK50.CFM16
HSK63.SP17	HSK63.CFM18
HSK80.SP19	HSK80.CFM20
HSK100.SP22	HSK100.CFM24
CPT40.SP	CPT40.CFM14
CPT50.SP	CPT50.CFM16
CPT63.SP	CPT63.CFM20
CPT80.SP	CPT80.CFM20

NEW

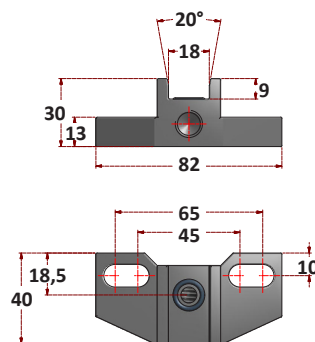
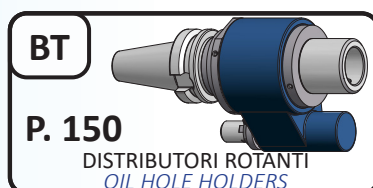
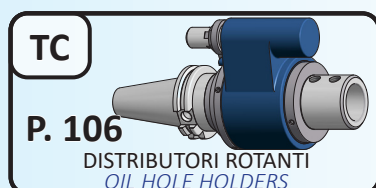


BL

DR

BLOCCO D'ARRESTO PER DISTRIBUTORE ROTANTE DEL REFRIGERANTE*STOP BLOCK FOR OIL HOLE HOLDERS*

Articolo
BL.DR



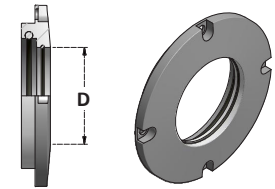
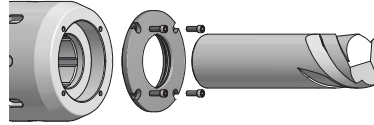


DISCHI DI TENUTA PER MANDRINI A FORTE SERRAGGIO SEALED CAPS FOR POWER MILLING CHUCKS

DISCHI DI TENUTA PER DIAMETRO NOMINALE SEALED CAPS FOR NOMINAL DIAMETER



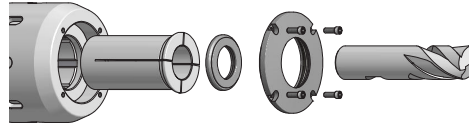
Articolo	D
CFS20.D20	20
CFS32.D32	32



DISCHI DI TENUTA PER L'UTILIZZO DELLE PINZE DI RIDUZIONE SEALED CAPS FOR REDUCTION COLLETSE USING



Articolo	D	RG Range
CFS20.RG	RG32	D4-D16
CFS32.RG	RG40	D6-D25



SCHEDA TECNICA
TECHNICAL DATA
FS P. 344

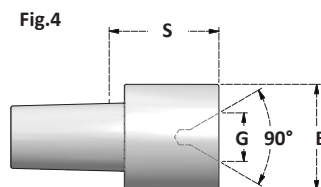
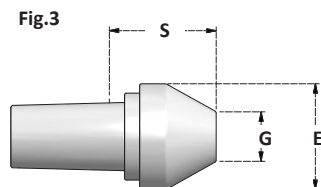
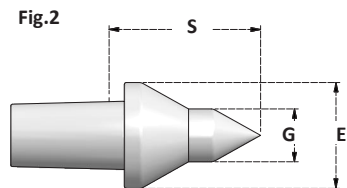
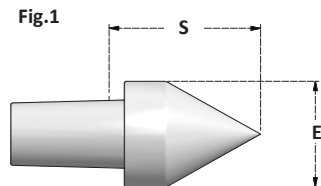
P. 284
DISCHETTI RG
RG SEALED DISCS

CUSPIDI INTERCAMBIABILI PER CONTROPUNTE ROTANTI INTERCHANGEABLE TIPS FOR LIVE CENTRES

Articolo	E	S	G	PUNTA CENTER	Fig
CNP32.CS1	14	16	-	60°	1
CNP32.CS1B	14	22	-	90°	1
CNP32.CS2	14	22	7	60°	2
CNP32.CS2B	14	26	8	60°	2

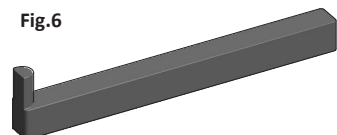
Articolo	E	S	G	PUNTA CENTER	Fig
CNP43.CS1	18	21	-	60°	1
CNP43.CS1B	18	28	-	90°	1
CNP43.CS2	18	27	7	60°	2
CNP43.CS2B	18	38	9	60°	2
CNP43.CS2C	22	41	12	60°	2
CNP43.CS3	30	21	14	60°	3
CNP43.CS4	26	20	20	-	4

Articolo	E	S	G	PUNTA CENTER	Fig
CNP58.CS1	28	34	-	60°	1
CNP58.CS2	28	40	7	60°	2
CNP58.CS2B	28	40	12	60°	2
CNP58.CS3	58	36	25	60°	3
CNP58.CS4	28	32	24	-	4



CHIAVE PER ESTRAZIONE CUSPIDI PULLER FOR TIPS EXTRACTION

Articolo	PER FOR	Fig
CH.CNP1	CNP32	5
CH.CNP2	CNP43- CNP58	6



VDI

P. 183
CONTROPUNTE ROTANTI
LIVE CENTRES

CM

P. 193
CONTROPUNTE ROTANTI
LIVE CENTRES

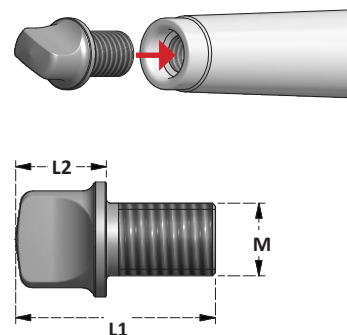
CYL

P. 233
CONTROPUNTE ROTANTI
LIVE CENTRES

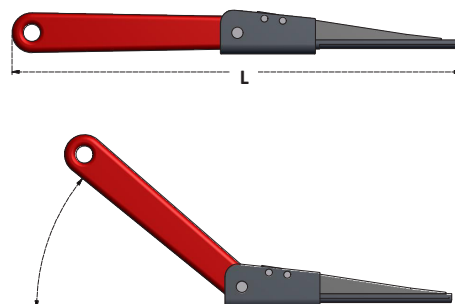


**TENONI PER CONO MORSE**
TANGS FOR MORSE TAPER

Articolo	CONO MORSE MORSE TAPER	M	L1	L2
TAG1.M6	CM1	M6	18	8
TAG2.M10	CM2	M10	29	13
TAG3.M12	CM3	M12	33	15
TAG4.M16	CM4	M16	40	17
TAG5.M20	CM5	M20	50	22

**ESTRATTORI SEMIAUTOMATICI PER MANDRINI CONO MORSE DIN6383**
HALF AUTOMATIC MORSE SHANK PULLERS

Articolo	PER CONO MORSE FOR MORSE TAPER	L
EST1-3	CM1- CM2- CM3	317
EST4-6	CM4- CM5- CM6	380

**TAMPONI PULITORI DELLE SEDI PORTAUTENSILI**
*SPINDLE TAPER WIPERS***CONO MORSE**
MORSE TAPERS

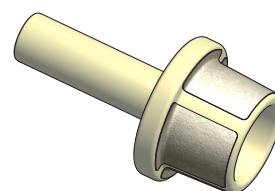
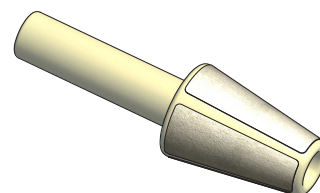
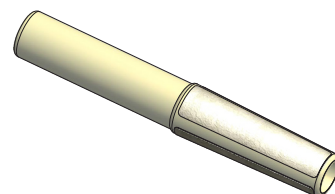
Articolo	Cono Taper
TCL.CM1	CM1
TCL.CM2	CM2
TCL.CM3	CM3
TCL.CM4	CM4
TCL.CM5	CM5

CONI TC - BT - ISO
TC - BT - ISO TAPERS

Articolo	Cono Taper
TCL.SK30	30
TCL.SK40	40
TCL.SK50	50

HSK
HSK

Articolo	Cono Taper
TCL.HSK40	40
TCL.HSK50	50
TCL.HSK63	63
TCL.HSK100	100



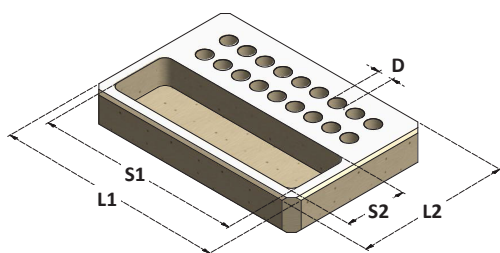
**BASI DI LEGNO PER PINZE SERIE E KIT**
EMPTY RACKS FOR SETS AND KITS

Fig.1

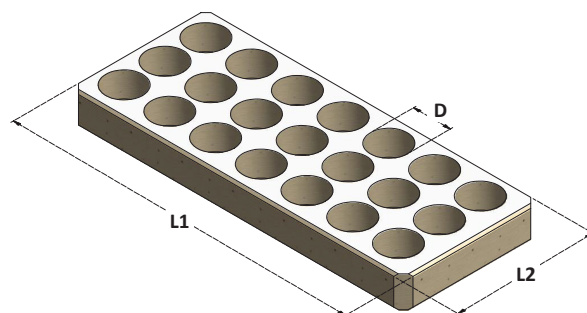


Fig.2

Articolo	PER PINZE FOR COLLETS	FORI SEATS	D	L1	L2	S1	S2	Fig.
TYE.8.18	ER8	18	8	167	112	150	50	1
TYE.11.18	ER11	18	11	167	112	150	50	1
TYE.16.15	ER16	15	16	167	112	-	-	2
TYE.20.15	ER20	15	18	167	112	-	-	2
TYE.25.6	ER25	6	25	140	80	-	-	2
TYE.25.21	ER25	21	25	274	114	-	-	2
TYE.32.6	ER32	6	30	140	80	-	-	2
TYE.32.21	ER32	21	30	274	114	-	-	2
TYE.40.10	ER40	10	38	274	114	-	-	2
TYE.40.30	ER40	30	38	273	218	-	-	2
TYE.50.12	ER50	12	47	273	218	-	-	2

Articolo	FORI SEATS	D	L1	L2	S1	S2	Fig.
TYE.D8.18	18	8	166	112	-	-	2
TYE.D12.18	18	12	166	112	-	-	2
TYE.D17.21	21	17	274	114	-	-	2
TYE.D21.24	24	21	274	114	-	-	2
TYE.D33.10	10	33	274	114	-	-	2

