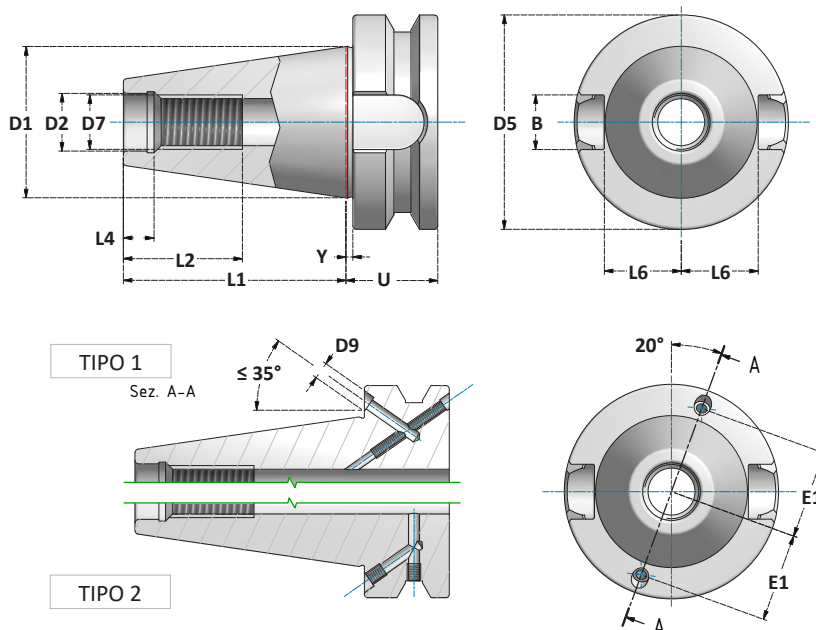


**MAS 403 (JIS B 6339) - BT****MANDRINI BT**
BT TOOLHOLDERS* FORM
AD+B**DIMENSIONI CONO**
TAPER DIMENSIONS

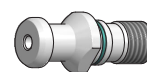
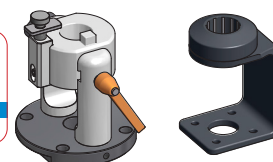
CONO / TAPER	B	D1	D2	D5	D7	D9*	E1*	L1	L2	L4	L6	Y	U
	+0,2 0		H8	h8	6H	Max		±0,3	min.	min.	0 -0,3		0 -0,1
BT30	16,1	31,75	12,5	46	M12	-	-	48,4	24	7	16,3	2	22
DBT30	16,1	31,75	12,5	46	M12	-	-	48,4	24	7	16,3	1	22
BT40 / BTB40	16,1	44,45	17	63	M16	4	27	65,4	30	9	22,6	2	27
DBT40	16,1	44,45	17	63	M16	4	27	65,4	30	9	22,6	1,01	27
BT50 / BTB50	25,7	69,85	25	100	M24	6	42	101,8	45	13	35,4	3	38
DBT50	25,7	69,85	25	100	M24	6	42	101,8	45	13	35,4	1,5	38

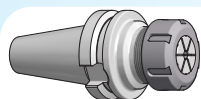
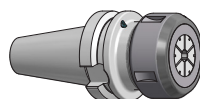
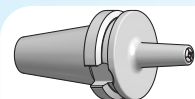
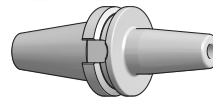
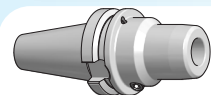
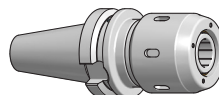
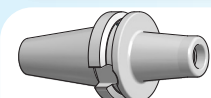
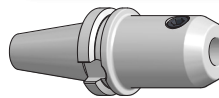
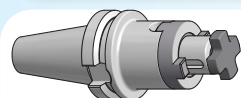
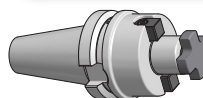
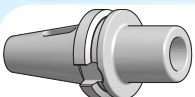
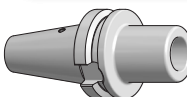
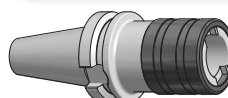
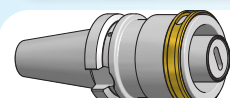
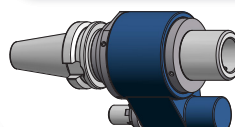
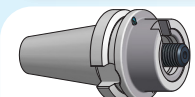
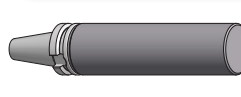
CARATTERISTICHE:

Tolleranza di precisione dei cono: AT3.
 Costruiti in acciaio certificato in barre.
 Eseguiti trattamenti termici da fornitori certificati.
 Rettificati di precisione esternamente e internamente.
 Controllati con strumenti di misura certificati.
 Prebilanciati nei gradi indicati nelle pagine di catalogo.

FEATURES:

The precision tolerance of tapers is AT3.
 Made of certified steel.
 Heat treatments performed by certified suppliers.
 Precision grinding externally and internally.
 Checked with certified measuring instruments.
 Pre-balanced as indicated in the catalog pages.

AD/AD+B **P.359**DOPPIO CONTATTO
DOUBLE CONTACT **P.358**BILANCIATURA
BALANCING **P.360**TIRANTI
PULL STUDS **P.234**SUPPORTI DI MONTAGGIO
ASSEMBLY DEVICES **P.310**

**MAS 403 (JIS B 6339) - BT****MANDRINI PORTAPINZA ER***COLLET CHUCKS ER***DIN ISO 15488 (DIN6499)***PAG. 114***MANDRINI PORTAPINZA EOC***COLLET CHUCKS EOC***DIN ISO 10897 (DIN6388)***PAG. 121***MANDRINI PORTAPINZA SLC***COLLET CHUCKS SLC**PAG. 122***MANDRINI
A CALETTAMENTO A CALDO***SHRINK FIT CHUCKS**PAG. 123***MANDRINI
A SERRAGGIO IDRAULICO***HYDRAULIC CHUCKS**PAG. 127***MANDRINI A FORTE SERRAGGIO***POWER MILLING CHUCKS**PAG. 128***MANDRINI PORTAFRESA
CON ATTACCO FILETTATO***SCREW IN MILL CHUCKS**PAG. 130***MANDRINI
PORTAFRESA WELDON***END MILL HOLDERS WELDON**PAG. 131***MANDRINI PORTAFRESA COMBI***COMBI SHELL MILL HOLDERS***DIN 6358***PAG. 138***MANDRINI PORTAFRESA FISSI***SHELL MILL HOLDERS***DIN 6357***PAG. 139***RIDUZIONI A CONO MORSE
PER PUNTE***MORSE TAPER ADAPTERS
FOR DRILLS***DIN 6383***PAG. 142***RIDUZIONI A CONO MORSE
PER FRESE***MORSE TAPER ADAPTERS FOR
THREADED MILLS***DIN 6364***PAG. 143***MANDRINI PORTAPUNTA***DRILL CHUCKS**PAG. 144***PORTAMASCHI***TAPPING CHUCKS**PAG. 146***RIDUZIONI***ADAPTERS**PAG. 148***DISTRIBUTORI ROTANTI
DEL REFRIGERANTE***OIL HOLE HOLDERS**PAG. 150***MANDRINI MODULARI TIPO
VARILOCK***MODULAR TOOLHOLDERS
VARILOCK TYPE**PAG. 152***MANDRINI
CON STELO LAVORABILE***BLANK ARBORS**PAG. 153***BARRE DI COLLAUDO***TEST ARBORS**PAG. 330*

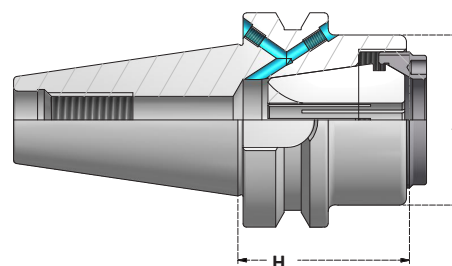
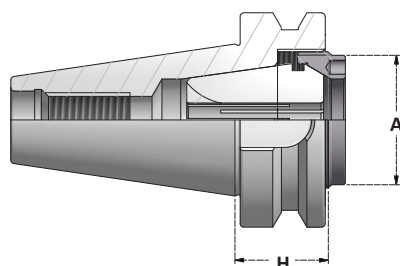
**MAS 403 (JIS B 6339) - BT****MANDRINI PORTAPINZA ER**
ER COLLET CHUCKS

DIN ISO 15488 (DIN6499)

ERC A	EXTRACORTI
Pag. 114	<i>STUB LENGTH</i>
ERC MINI	CON GHIERA MINI - <i>ATTACCO DOPPIO CONTATTO</i>
Pag. 115	<i>WITH MINI NUT - DOUBLE CONTACT SHANK</i>
ERC MINI	CON GHIERA MINI
Pag. 115	<i>WITH MINI NUT</i>
ERC	CON GHIERA STANDARD - <i>ATTACCO DOPPIO CONTATTO</i>
Pag. 116	<i>WITH STANDARD NUT - DOUBLE CONTACT SHANK</i>
ERC	CON GHIERA STANDARD
Pag. 117-118	<i>WITH STANDARD NUT</i>
ERC NF	CON GHIERA "NF" SENZA TACCHE - BILANCIATI PER ALTE VELOCITÀ
Pag. 119	<i>WITH "NF" NOTCH FREE NUT - BALANCED FOR HIGH SPEEDS</i>
ERC RG	A CENTRATURA REGOLABILE
Pag. 120	<i>ADJUSTABLE RUNOUT</i>

BT

ERC A

DIN ISO 15488 (DIN6499)**MANDRINI PORTAPINZA ER - EXTRACORTI**
ER COLLET CHUCKS - STUB LENGTHSCHEDA TECNICA
TECHNICAL DATA
ERC | P. 338

Articolo	H	A	Collets Range	Ghiera Nut
BT40.H29.ERC25A	29	32	1÷20	G25A
BT40.H29.ERC32A	29	40	2÷22	G32A

Articolo	H	A	Collets Range	Ghiera Nut
BTB40.H50.ERC32A	50	50	2÷22	G32A

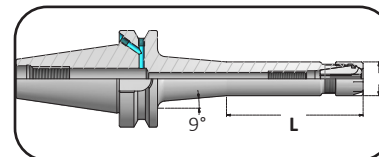
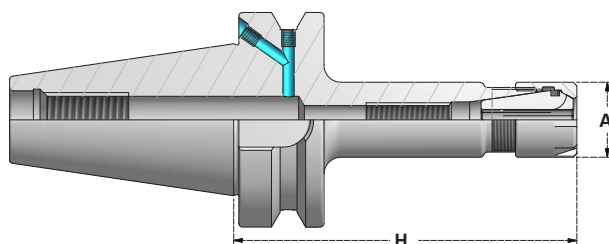
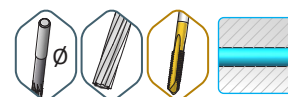
Articolo	H	A	Collets Range	Ghiera Nut
BTB50.H40.ERC32A	40	50	2÷22	G32A

	Collets Range	Ghiera Nut
...ERC25A	1÷20	G25A
...ERC32A	2÷22	G32A

ACCESSORI - ACCESSORIES

Fornibili a richiesta con diverse ghiera e gradi di bilanciatura.

Available on request with different nuts and balancing.

**MANDRINI PORTAPINZA ER**
ER COLLET CHUCKSSCHEDA TECNICA
TECHNICAL DATA
ERC P. 338**G6,3**

15000r.p.m.

ATTACCO STANDARD
STANDARD SHANK

Articolo	H	L
BT30.H100.ERC8M	100	45
BT30.H100.ERC11M	100	-
BT30.H100.ERC16M	100	-
BT30.H100.ERC20M	100	-
BT30.H100.ERC25M	100	-



Articolo	H	L
BTB40.H100.ERC11M	100	-
BTB40.H125.ERC11M	125	60
BTB40.H150.ERC11M	150	60
BTB40.H100.ERC16M	100	-
BTB40.H125.ERC16M	125	-
BTB40.H150.ERC16M	150	100
BTB40.H200.ERC16M	200	100
BTB40.H100.ERC20M	100	-
BTB40.H125.ERC20M	125	-
BTB40.H150.ERC20M	150	-
BTB40.H200.ERC20M	200	-
BTB40.H100.ERC25M	100	-
BTB40.H125.ERC25M	125	-
BTB40.H150.ERC25M	150	-
BTB40.H200.ERC25M	200	-



Articolo	H	L
BTB50.H100.ERC16M	100	-
BTB50.H130.ERC16M	130	-
BTB50.H160.ERC16M	160	100
BTB50.H200.ERC16M	200	100
BTB50.H100.ERC20M	100	-
BTB50.H130.ERC20M	130	-
BTB50.H160.ERC20M	160	-
BTB50.H200.ERC20M	200	-
BTB50.H100.ERC25M	100	-
BTB50.H130.ERC25M	130	-
BTB50.H160.ERC25M	160	-
BTB50.H200.ERC25M	200	-

G2,5

25000r.p.m.

**ATTACCO A DOPPIO CONTATTO**
DOUBLE CONTACT SHANK

Articolo	H
DBT30.H70.ERC11M	70
DBT30.H100.ERC11M	100
DBT30.H70.ERC16M	70
DBT30.H100.ERC16M	100
DBT30.H70.ERC20M	70
DBT30.H100.ERC20M	100



Articolo	H
DBT40.H70.ERC11M	70
DBT40.H100.ERC11M	100
DBT40.H70.ERC16M	70
DBT40.H100.ERC16M	100
DBT40.H70.ERC20M	70
DBT40.H100.ERC20M	100



Articolo	H
DBT50.H100.ERC11M	100
DBT50.H130.ERC11M	130
DBT50.H100.ERC16M	100
DBT50.H130.ERC16M	130

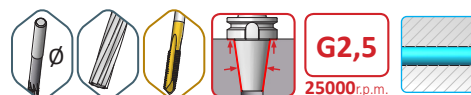
	A	Collets Range	Ghiera Nut
...ERC8M	12	1÷5	G8M
...ERC11M	16	1÷7	G11M
...ERC16M	22	1÷10	G16M
...ERC20M	28	1÷14	G20M
...ERC25M	35	1÷20	G25M

**ACCESSORI - ACCESSORIES****P. 250**
PINZE
COLLETS**P. 280**
GHIERE
NUTS**P. 288**
CHIAVI
WRENCHES**P. 310**
SUPPORTI DI MONTAGGIO
ASSEMBLY DEVICES**P. 234**
TIRANTI
PULL STUDS

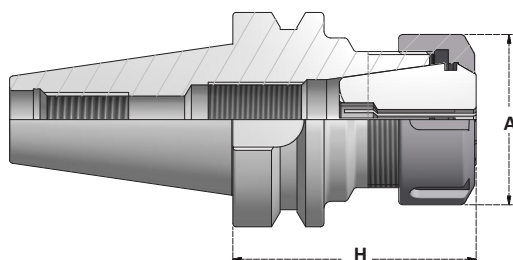
Fornibili a richiesta con diverse ghiera e gradi di bilanciatura.

Available on request with different nuts and balancing.



**MANDRINI A DOPPIO CONTATTO PORTAPINZA ER**
DOUBLE CONTACT ER COLLET CHUCKS**G2,5**

25000 r.p.m.

SCHEDA TECNICA
TECHNICAL DATA
ERC P. 338**ATTACCO A DOPPIO CONTATTO**
DOUBLE CONTACT SHANK

Articolo	H
DBT30.H50.ERC16	50
DBT30.H70.ERC16	70
DBT30.H120.ERC16	120
DBT30.H50.ERC20	50
DBT30.H70.ERC20	70
DBT30.H135.ERC20	135
DBT30.H70.ERC25	70
DBT30.H100.ERC25	100
DBT30.H135.ERC25	135
DBT30.H70.ERC32	70
DBT30.H100.ERC32	100
DBT30.H120.ERC32	120
DBT30.H80.ERC40	80
DBT30.H100.ERC40	100

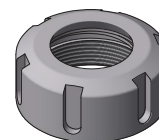
ATTACCO A DOPPIO CONTATTO
DOUBLE CONTACT SHANK

Articolo	H
DBT50.H80.ERC16	80
DBT50.H100.ERC16	100
DBT50.H160.ERC16	160
DBT50.H80.ERC20	80
DBT50.H100.ERC20	100
DBT50.H160.ERC20	160
DBT50.H80.ERC25	80
DBT50.H100.ERC25	100
DBT50.H160.ERC25	160
DBT50.H80.ERC32	80
DBT50.H100.ERC32	100
DBT50.H160.ERC32	160
DBT50.H80.ERC40	80

	A	Collets Range	Ghiera Nut
...ERC16	28	1÷10	G16SE
...ERC20	34	1÷14	G20SE

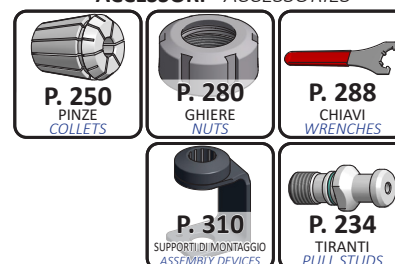


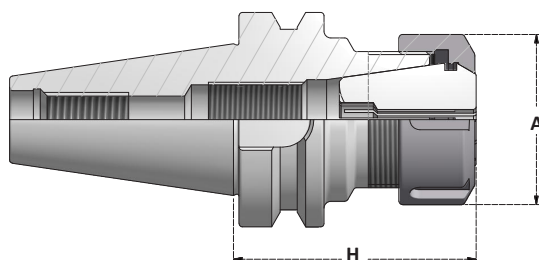
...ERC25	42	1÷20	G25S
...ERC32	50	2÷22	G32S
...ERC40	63	3÷30	G40S

**ATTACCO A DOPPIO CONTATTO**
DOUBLE CONTACT SHANK

Articolo	H
DBT40.H70.ERC16	70
DBT40.H100.ERC16	100
DBT40.H160.ERC16	160
DBT40.H70.ERC20	70
DBT40.H70.ERC25	70
DBT40.H100.ERC25	100
DBT40.H160.ERC25	160
DBT40.H70.ERC32	70
DBT40.H100.ERC32	100
DBT40.H130.ERC32	130
DBT40.H160.ERC32	160
DBT40.H70.ERC40	70

Fornibili a richiesta con diverse ghiera e gradi di bilanciatura.

*Available on request with different nuts and balancing.***ACCESSORI - ACCESSORIES**

**MANDRINI PORTAPINZA ER**
ER COLLET CHUCKSSCHEDA TECNICA
TECHNICAL DATA
ERC P. 338

Articolo	H
BT30.H55.ERC16	55
BT30.H70.ERC16	70
BT30.H100.ERC16	100
BT30.H70.ERC20	70
BT30.H100.ERC20	100
BT30.H70.ERC25	70
BT30.H100.ERC25	100
BT30.H70.ERC32	70
BT30.H100.ERC32	100
BT30.H80.ERC40	80
BT30.H100.ERC40	100

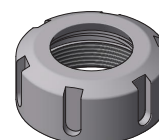
Articolo	H
BT40.H70.ERC16	70
BT40.H70.ERC25	70
BT40.H70.ERC32	70
BT40.H100.ERC32	100
BT40.H80.ERC40	80
BT40.H100.ERC40	100

Articolo	H
BT50.H80.ERC32	80
BT50.H100.ERC32	100
BT50.H80.ERC40	80

	A	Collets Range	Ghiera Nut
...ERC16	28	1÷10	G16SE
...ERC20	34	1÷14	G20SE



...ERC25	42	1÷20	G25S
...ERC32	50	2÷22	G32S
...ERC40	63	3÷30	G40S



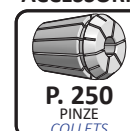
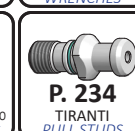
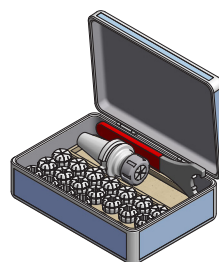
Fornibili a richiesta con diverse ghiera e gradi di bilanciatura.

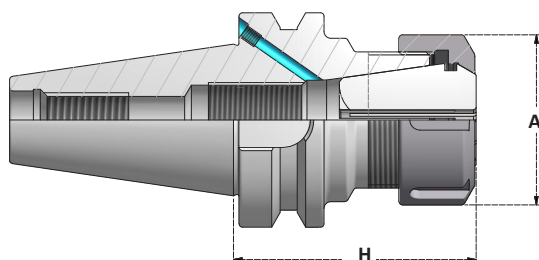
Available on request with different nuts and balancing.

Articolo	Pinze Collets	Mandrino Toolholder	Chiave Wrench
BX.BT30.ERC32-6	ERC32.D6-D8-D10-D12-D16-D20	BT30.H70.ERC32	CH32S
BX.BT30.ERC40-7	ERC40.D6-D8-D10-D12-D16-D20-D25	BT30.H70.ERC40	CH40S

Articolo	Pinze Collets	Ø Pinze Collets	Mandrino Toolholder	Chiave Wrench
BX.BT30.ERC25	ERC25	D2÷16	BT30.H70.ERC25	CH25S
BX.BT30.ERC32	ERC32	D3÷20	BT30.H70.ERC32	CH32S
BX.BT30.ERC40	ERC40	D4÷26	BT30.H80.ERC40	CH40S

ACCESSORI - ACCESSORIES

**P. 250**
PINZE COLLETS**P. 280**
GHIERE NUTS**P. 288**
CHIAVI WRENCHES**P. 310**
SUPPORTI DI MONTAGGIO ASSEMBLY DEVICES**P. 234**
TIRANTI PULL STUDS

**MANDRINI PORTAPINZA ER**
ER COLLET CHUCKSSCHEDA TECNICA
TECHNICAL DATA
ERC P. 338

Articolo	H
BTB40.H70.ERC16	70
BTB40.H100.ERC16	100
BTB40.H130.ERC16	130
BTB40.H160.ERC16	160
BTB40.H200.ERC16	200
BTB40.H70.ERC20	70
BTB40.H100.ERC20	100
BTB40.H130.ERC20	130
BTB40.H160.ERC20	160
BTB40.H200.ERC20	200
BTB40.H70.ERC25	70
BTB40.H100.ERC25	100
BTB40.H130.ERC25	130
BTB40.H160.ERC25	160
BTB40.H200.ERC25	200
BTB40.H70.ERC32	70
BTB40.H100.ERC32	100
BTB40.H130.ERC32	130
BTB40.H160.ERC32	160
BTB40.H200.ERC32	200
BTB40.H70.ERC40	70
BTB40.H100.ERC40	100
BTB40.H130.ERC40	130
BTB40.H160.ERC40	160
BTB40.H200.ERC40	200
BTB40.H85.ERC50	85



Articolo	H
BTB50.H80.ERC16	80
BTB50.H100.ERC16	100
BTB50.H130.ERC16	130
BTB50.H160.ERC16	160
BTB50.H200.ERC16	200
BTB50.H80.ERC20	80
BTB50.H100.ERC20	100
BTB50.H130.ERC20	130
BTB50.H160.ERC20	160
BTB50.H200.ERC20	200
BTB50.H80.ERC25	80
BTB50.H100.ERC25	100
BTB50.H130.ERC25	130
BTB50.H160.ERC25	160
BTB50.H200.ERC25	200
BTB50.H80.ERC32	80
BTB50.H100.ERC32	100
BTB50.H130.ERC32	130
BTB50.H160.ERC32	160
BTB50.H200.ERC32	200
BTB50.H250.ERC32	250
BTB50.H80.ERC40	80
BTB50.H100.ERC40	100
BTB50.H130.ERC40	130
BTB50.H160.ERC40	160
BTB50.H200.ERC40	200
BTB50.H250.ERC40	250
BTB50.H100.ERC50	100
BTB50.H130.ERC50	130
BTB50.H160.ERC50	160

	A	Collets Range	Ghiera Nut
...ERC16	28	1÷10	G16SE
...ERC20	34	1÷14	G20SE
...ERC25	42	1÷20	G25S
...ERC32	50	2÷22	G32S
...ERC40	63	3÷30	G40S
...ERC50	78	6÷34	G50S



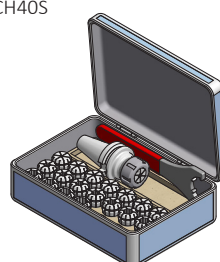
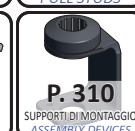
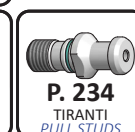
Fornibili a richiesta con diverse ghiera e gradi di bilanciatura.

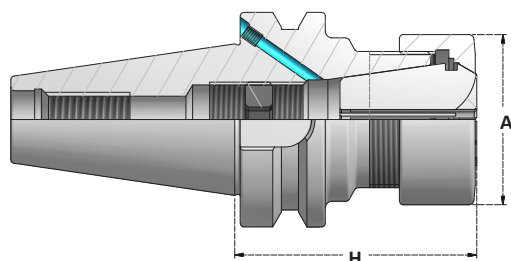
Available on request with different nuts and balancing.

KIT - MANDRINO, CHIAVE E PINZE

KIT - TOOLHOLDER, WRENCH AND COLLETS

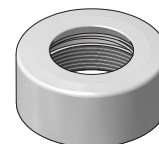
Articolo	Pinze Collets		Mandrino Toolholder	Chiave Wrench
BX.BTB40.ERC32-6	ERC32.D6-D8-D10-D12-D16-D20		BTB40.H70.ERC32	CH32S
BX.BTB40.ERC40-7	ERC40.D6-D8-D10-D12-D16-D20-D25		BTB40.H70.ERC40	CH40S
Articolo	Pinze Collets	Ø Pinze Collets	Mandrino Toolholder	Chiave Wrench
BX.BTB40.ERC25	ERC25	D2÷16	BTB40.H70.ERC25	CH25S
BX.BTB40.ERC32	ERC32	D3÷20	BTB40.H70.ERC32	CH32S
BX.BTB40.ERC40	ERC40	D4÷26	BTB40.H70.ERC40	CH40S
BX.BTB50.ERC25	ERC25	D2÷16	BTB50.H80.ERC25	CH25S
BX.BTB50.ERC32	ERC32	D3÷20	BTB50.H80.ERC32	CH32S
BX.BTB50.ERC40	ERC40	D4÷26	BTB50.H80.ERC40	CH40S

ACCESSORI - ACCESSORIES

**MANDRINI PORTAPINZA ER PER ALTE VELOCITA'**
ER COLLET CHUCKS FOR HIGH SPEEDSSCHEDA TECNICA
TECHNICAL DATA
ERC P. 338

	A	Collets Range	Ghiera Nut
...ERC8MNF	28	1÷5	G8NFM
...ERC11MNF	34	1÷7	G11NFM
...ERC16MNF	28	1÷10	G16NFM
...ERC20MNF	34	1÷14	G20NFM
...ERC25MNF	42	1÷20	G25NFM

	A	Collets Range	Ghiera Nut
...ERC16NF	28	1÷10	G16NF
...ERC20NF	34	1÷14	G20NF
...ERC25NF	42	1÷20	G25NF
...ERC32NF	50	2÷22	G32NF



Articolo	H
BT30.H100.ERC8MNF	100
BT30.H100.ERC11MNF	100
BT30.H100.ERC16MNF	100
BT30.H100.ERC20MNF	100
BT30.H100.ERC25MNF	100

Articolo	H
BT30.H70.ERC16NF	70
BT30.H70.ERC20NF	70
BT30.H70.ERC25NF	70
BT30.H70.ERC32NF	70

Articolo	H
BTB40.H100.ERC11MNF	100
BTB40.H125.ERC11MNF	125
BTB40.H150.ERC11MNF	150
BTB40.H100.ERC16MNF	100
BTB40.H125.ERC16MNF	125
BTB40.H150.ERC16MNF	150
BTB40.H100.ERC20MNF	100
BTB40.H125.ERC20MNF	125
BTB40.H150.ERC20MNF	150
BTB40.H100.ERC25MNF	100
BTB40.H125.ERC25MNF	125
BTB40.H150.ERC25MNF	150

Articolo	H
BTB40.H70.ERC16NF	70
BTB40.H100.ERC16NF	100
BTB40.H130.ERC16NF	130
BTB40.H160.ERC16NF	160
BTB40.H70.ERC20NF	70
BTB40.H100.ERC20NF	100
BTB40.H130.ERC20NF	130
BTB40.H160.ERC20NF	160
BTB40.H70.ERC25NF	70
BTB40.H100.ERC25NF	100
BTB40.H130.ERC25NF	130
BTB40.H160.ERC25NF	160
BTB40.H70.ERC32NF	70
BTB40.H100.ERC32NF	100
BTB40.H130.ERC32NF	130
BTB40.H160.ERC32NF	160

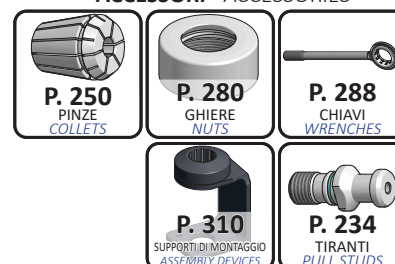
Mandrini prebilanciati a G2,5 / 25000r.p.m. forniti con ghiera "NF" senza tacche.

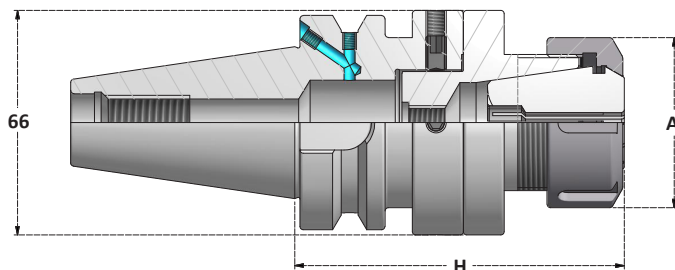
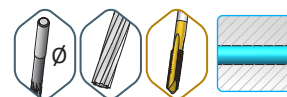
Attacco a doppio contatto disponibile a richiesta.

Toolholders balanced G2,5 / 25000r.p.m. supplied with "NF" notch free nut.

Double contact shank available on request.

ACCESSORI - ACCESSORIES



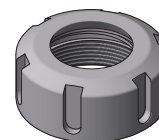
**MANDRINI PORTAPINZA ER A CENTRATURA REGOLABILE**
RUNOUT ADJUSTABLE ER COLLET CHUCKSSCHEDA TECNICA
TECHNICAL DATA
ERC P. 338 $\pm 0,1\text{mm}$ Centratrice regolabile
Adjustable runout

Articolo	H
BTB40.H93.ERC16RG	93
BTB40.H95.ERC20RG	95
BTB40.H96.ERC25RG	96
BTB40.H97.ERC32RG	97
BTB40.H131.ERC40RG	131

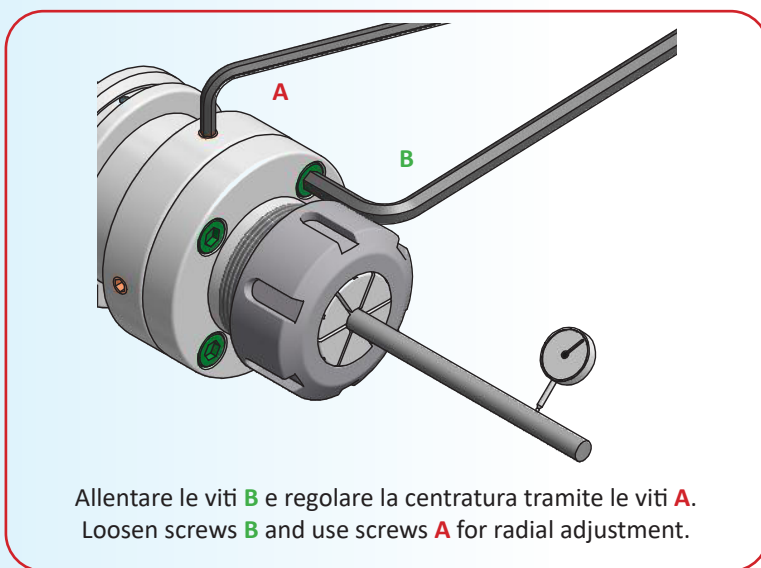
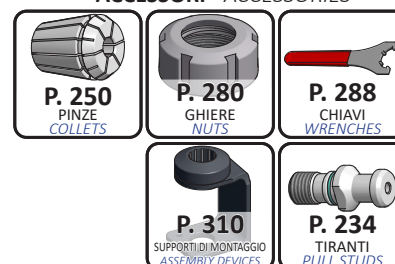
	A	Collets Range	Ghiera Nut
...ERC16	28	1÷10	G16SE
...ERC20	34	1÷14	G20SE



...ERC25	42	1÷20	G25S
...ERC32	50	2÷22	G32S
...ERC40	63	3÷30	G40S

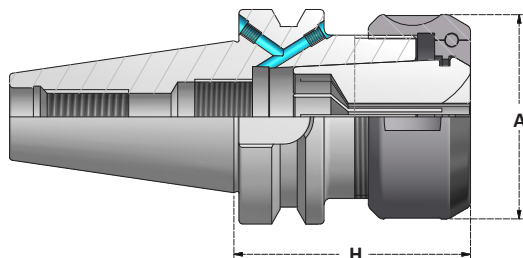


Articolo	H
BTB50.H103.ERC16RG	103
BTB50.H105.ERC20RG	105
BTB50.H106.ERC25RG	106
BTB50.H107.ERC32RG	107
BTB50.H141.ERC40RG	141

Allentare le viti **B** e regolare la centratura tramite le viti **A**.
Loosen screws **B** and use screws **A** for radial adjustment.**ACCESSORI - ACCESSORIES**

**MANDRINI PORTAPINZA EOC**
EOC COLLET CHUCKS**G6,3**

15000 r.p.m.

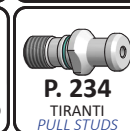


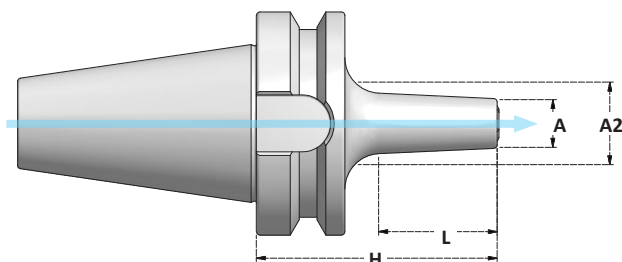
Articolo	H
BTB40.H70.EOC16	70
BTB40.H70.EOC25	70
BTB40.H100.EOC25	100
BTB40.H90.EOC32	90



Articolo	H
BTB50.H70.EOC25	70
BTB50.H80.EOC32	80

	A	Collets Range	Ghiera Nut
...EOC16	43	2÷16	G16OCC
...EOC25	60	2÷25	G25OCC
...EOC32	72	3÷32	G32OCC

ACCESSORI - ACCESSORIES

**MANDRINI A DOPPIO CONTATTO PORTAPINZA SLC**
DOUBLE CONTACT SLC COLLET CHUCKS**ATTACCO A DOPPIO CONTATTO**
DOUBLE CONTACT SHANK

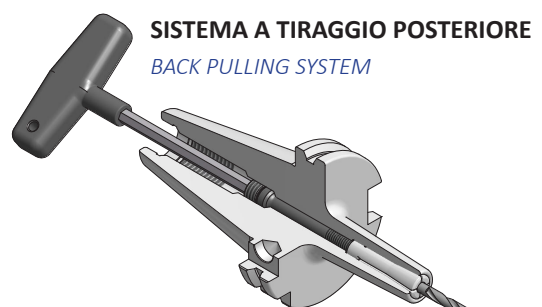
Articolo	H	L	A2
DBT30.H70.SLC6	70	38	18,1
DBT30.H100.SLC6	100	68	21,2
DBT30.H70.SLC12	70	47	33,4
DBT30.H100.SLC12	100	77	38,1

	A	Collets Range	MT
...SLC6	14	3÷6	12
...SLC12	26	3÷12	45
...SLC25	40	6÷25	90

Momento torcente consigliato: **MT**
Recommended tightening torque:

ATTACCO A DOPPIO CONTATTO
DOUBLE CONTACT SHANK

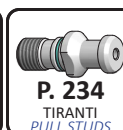
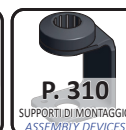
Articolo	H	L	A2
DBT40.H70.SLC6	70	28	17,1
DBT40.H100.SLC6	100	58	20,1
DBT40.H130.SLC6	130	88	23,3
DBT40.H70.SLC12	70	33	31
DBT40.H100.SLC12	100	63	31,6
DBT40.H170.SLC12	170	133	37,7
DBT40.H80.SLC25	80	50	44,3
DBT40.H100.SLC25	100	70	46,1



PASSAGGIO DEL REFRIGERANTE
COOLANT THROUGH

ATTACCO A DOPPIO CONTATTO
DOUBLE CONTACT SHANK

Articolo	H	L	A2
DBT50.H70.SLC6	70	17	15,9
DBT50.H100.SLC6	100	47	19,1
DBT50.H70.SLC12	70	22	28,1
DBT50.H100.SLC12	100	52	30,6
DBT50.H125.SLC12	125	77	32,9
DBT50.H70.SLC25	70	22	41,9
DBT50.H100.SLC25	100	52	44,5

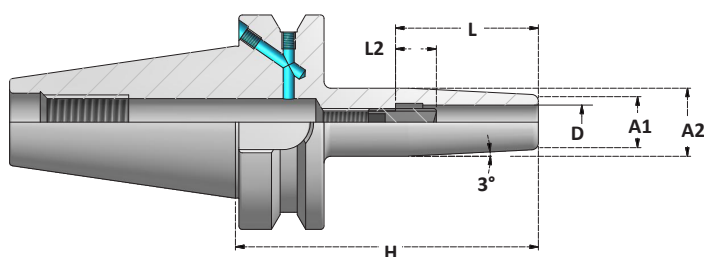
ACCESSORI - ACCESSORIES

**MAS 403 (JIS B 6339) - BT****MANDRINI A CALETTAMENTO A CALDO**
SHRINK FIT CHUCKS

TM SL	SLIM
Pag. 123	<i>SLIM FIT</i>
TM	ATTACCO DOPPIO CONTATTO
Pag. 124	<i>DOUBLE CONTACT SHANK</i>
TM	STANDARD
Pag. 125	<i>STANDARD</i>
TM C	CON FORI DI LUBRIFICAZIONE
Pag. 126	<i>WITH COOLANT HOLES</i>

BT

TM SL

MANDRINI A CALETTAMENTO A CALDO SLIM
SLIM SHRINK FIT CHUCKS

SCHEDA TECNICA
TECHNICAL DATA
TM | P. 340



Articolo	H	A2
BTB40.H90.TM3SL	90	13
BTB40.H120.TM3SL	120	16
BTB40.H90.TM4SL	90	15
BTB40.H120.TM4SL	120	20
BTB40.H90.TM5SL	90	16
BTB40.H120.TM5SL	120	20
BTB40.H90.TM6SL	90	17
BTB40.H130.TM6SL	130	19
BTB40.H160.TM6SL	160	19
BTB40.H90.TM8SL	90	19
BTB40.H130.TM8SL	130	21
BTB40.H160.TM8SL	160	21
BTB40.H90.TM10SL	90	21
BTB40.H130.TM10SL	130	23
BTB40.H160.TM10SL	160	23
BTB40.H90.TM12SL	90	23
BTB40.H130.TM12SL	130	25
BTB40.H160.TM12SL	160	25
BTB40.H90.TM14SL	90	25
BTB40.H130.TM14SL	130	27
BTB40.H160.TM14SL	160	27

Articolo	H	A2
BTB40.H90.TM16SL	90	29
BTB40.H130.TM16SL	130	31
BTB40.H160.TM16SL	160	31
BTB40.H90.TM18SL	90	34
BTB40.H130.TM18SL	130	35
BTB40.H160.TM18SL	160	35
BTB40.H90.TM20SL	90	39
BTB40.H130.TM20SL	130	39
BTB40.H160.TM20SL	160	39

		D	L	A1
TM3SL	*	3	12	9
TM4SL	*	4	16	10
TM5SL	*	5	20	11
TM6SL		6	36	12
TM8SL		8	36	14
TM10SL		10	41	16
TM12SL		12	46	18
TM14SL		14	46	22
TM16SL		16	49	24
TM18SL		18	49	28
TM20SL		20	51	32

Profondità regolabile: **L2= 10mm**
Adjustable depth:

* Senza vite di regolazione

* Without adjusting screw



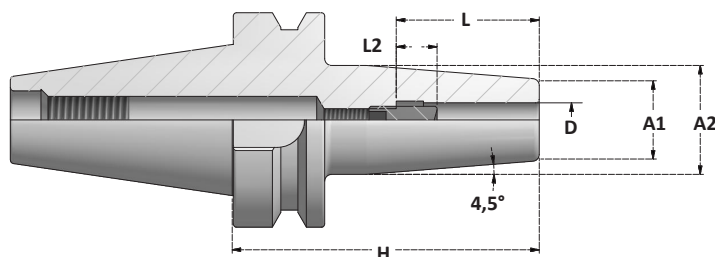


MANDRINI A DOPPIO CONTATTO A CALETTAMENTO A CALDO DOUBLE CONTACT SHRINK FIT CHUCKS



G2,5

25000r.p.m.



SCHEDA TECNICA
TECHNICAL DATA
TM P. 340

ATTACCO A DOPPIO CONTATTO DOUBLE CONTACT SHANK



Articolo	H
DBT30.H80.TM4	80
DBT30.H80.TM5	80
DBT30.H80.TM6	80
DBT30.H80.TM8	80
DBT30.H80.TM10	80
DBT30.H80.TM12	80
DBT30.H80.TM16	80
DBT30.H90.TM20	90

ATTACCO A DOPPIO CONTATTO DOUBLE CONTACT SHANK



Articolo	H
DBT40.H90.TM3	90
DBT40.H90.TM4	90
DBT40.H90.TM5	90
DBT40.H90.TM6	90
DBT40.H130.TM6	130
DBT40.H160.TM6	160
DBT40.H90.TM8	90
DBT40.H130.TM8	130
DBT40.H160.TM8	160
DBT40.H90.TM10	90
DBT40.H130.TM10	130
DBT40.H160.TM10	160
DBT40.H90.TM12	90
DBT40.H130.TM12	130
DBT40.H160.TM12	160
DBT40.H90.TM14	90
DBT40.H90.TM16	90
DBT40.H130.TM16	130
DBT40.H160.TM16	160
DBT40.H100.TM18	100
DBT40.H100.TM20	100
DBT40.H130.TM20	130
DBT40.H160.TM20	160
DBT40.H100.TM25	100
DBT40.H100.TM32	100

ATTACCO A DOPPIO CONTATTO DOUBLE CONTACT SHANK



Articolo	H
DBT50.H100.TM6	100
DBT50.H100.TM8	100
DBT50.H100.TM10	100
DBT50.H100.TM12	100
DBT50.H100.TM14	100
DBT50.H100.TM16	100
DBT50.H100.TM18	100
DBT50.H100.TM20	100
DBT50.H110.TM25	110
DBT50.H110.TM32	110

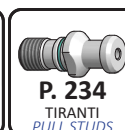
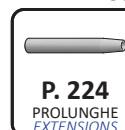
	D	L	A1	A2	
...TM3	*	3	12	10	20
...TM4	*	4	16	15	25
...TM5	*	5	20	15	25
...TM6		6	36	21	27
...TM8		8	36	21	27
...TM10		10	41	24	32
...TM12		12	46	24	32
...TM14		14	46	24	32
...TM16		16	49	24	32
...TM18		18	49	33	42
...TM20		20	51	33	42
...TM25		25	57	44	53
...TM32		32	61	44	53

* Senza vite di regolazione

* Without adjusting screw

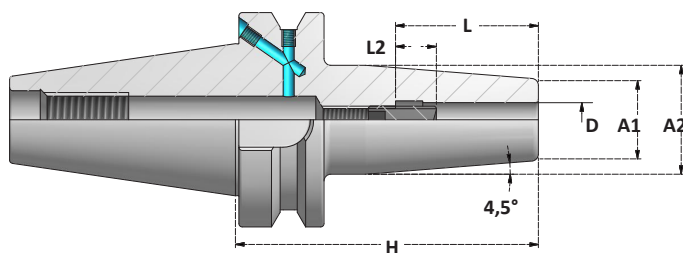
Profondità regolabile: **L2= 10mm**
Adjustable depth:

ACCESSORI - ACCESSORIES



**MANDRINI A CALETTAMENTO A CALDO**
SHRINK FIT CHUCKS**G2,5**

25000 r.p.m.

SCHEDA TECNICA
TECHNICAL DATA
TM P. 340

Articolo	H
BTB40.H90.TM3	90
BTB40.H120.TM3	120
BTB40.H160.TM3	160
BTB40.H90.TM4	90
BTB40.H120.TM4	120
BTB40.H160.TM4	160
BTB40.H90.TM5	90
BTB40.H120.TM5	120
BTB40.H160.TM5	160
BTB40.H90.TM6	90
BTB40.H130.TM6	130
BTB40.H160.TM6	160
BTB40.H90.TM8	90
BTB40.H130.TM8	130
BTB40.H160.TM8	160
BTB40.H90.TM10	90
BTB40.H130.TM10	130
BTB40.H160.TM10	160
BTB40.H90.TM12	90
BTB40.H130.TM12	130
BTB40.H160.TM12	160
BTB40.H90.TM14	90
BTB40.H130.TM14	130
BTB40.H160.TM14	160
BTB40.H90.TM16	90
BTB40.H130.TM16	130
BTB40.H160.TM16	160
BTB40.H90.TM18	90
BTB40.H130.TM18	130
BTB40.H160.TM18	160
BTB40.H90.TM20	90
BTB40.H130.TM20	130
BTB40.H160.TM20	160
BTB40.H100.TM25	100
BTB40.H130.TM25	130
BTB40.H160.TM25	160
BTB40.H100.TM32	100
BTB40.H130.TM32	130
BTB40.H160.TM32	160



Articolo	H
BTB50.H100.TM6	100
BTB50.H120.TM6	120
BTB50.H160.TM6	160
BTB50.H100.TM8	100
BTB50.H120.TM8	120
BTB50.H160.TM8	160
BTB50.H100.TM10	100
BTB50.H120.TM10	120
BTB50.H160.TM10	160
BTB50.H100.TM12	100
BTB50.H120.TM12	120
BTB50.H160.TM12	160
BTB50.H100.TM14	100
BTB50.H120.TM14	120
BTB50.H160.TM14	160
BTB50.H100.TM16	100
BTB50.H120.TM16	120
BTB50.H160.TM16	160
BTB50.H100.TM18	100
BTB50.H120.TM18	120
BTB50.H160.TM18	160
BTB50.H100.TM20	100
BTB50.H120.TM20	120
BTB50.H160.TM20	160
BTB50.H110.TM25	110
BTB50.H160.TM25	160
BTB50.H110.TM32	110
BTB50.H160.TM32	160

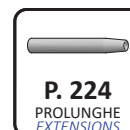
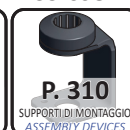
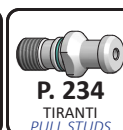
	D	L	A1	A2	
...TM3	*	3	12	10	20
...TM4	*	4	16	15	25
...TM5	*	5	20	15	25
...TM6		6	36	21	27
...TM8		8	36	21	27
...TM10		10	41	24	32
...TM12		12	46	24	32
...TM14		14	46	24	32
...TM16		16	49	24	32
...TM18		18	49	33	42
...TM20		20	51	33	42
...TM25		25	57	44	53
...TM32		32	61	44	53

* Senza vite di regolazione

* Without adjusting screw

Profondità regolabile: **L2= 10mm**
Adjustable depth:

ACCESSORI - ACCESSORIES

**P. 224**
PROLUNGHE
EXTENSIONS**P. 310**
SUPPORTI DI MONTAGGIO
ASSEMBLY DEVICES**P. 234**
TIRANTI
PULL STUDS



MAS 403 (JIS B 6339)

BT

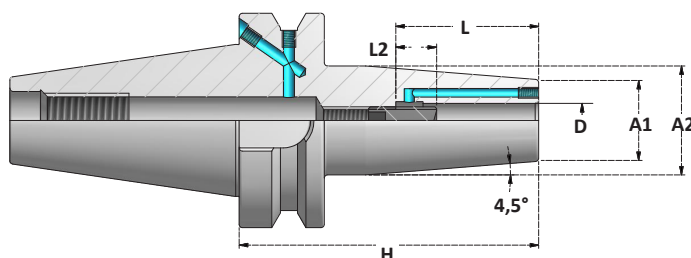
TM JET

NEW MANDRINI A DOPPIO CONTATTO A CALETTAMENTO A CALDO JET

CON FORI PER IL REFRIGERANTE

DOUBLE CONTACT SHRINK FIT CHUCKS JET TYPE

WITH HOLES FOR COOLANT



SCHEDA TECNICA
TECHNICAL DATA
TM P. 340

ATTACCO A DOPPIO CONTATTO DOUBLE CONTACT SHANK



Articolo	H
DBT30.H90.TM6JET	90
DBT30.H120.TM6JET	120
DBT30.H90.TM8JET	90
DBT30.H120.TM8JET	120
DBT30.H90.TM10JET	90
DBT30.H120.TM10JET	120
DBT30.H90.TM12JET	90
DBT30.H120.TM12JET	120
DBT30.H90.TM14JET	90
DBT30.H120.TM14JET	120
DBT30.H90.TM16JET	90
DBT30.H120.TM16JET	120
DBT30.H80.TM18JET	80
DBT30.H120.TM18JET	120
DBT30.H90.TM20JET	90
DBT30.H120.TM20JET	120

ATTACCO A DOPPIO CONTATTO DOUBLE CONTACT SHANK



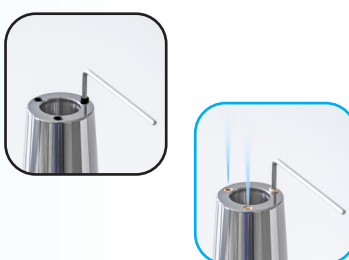
Articolo	H
DBTB40.H90.TM6JET	90
DBTB40.H120.TM6JET	120
DBTB40.H90.TM8JET	90
DBTB40.H120.TM8JET	120
DBTB40.H90.TM10JET	90
DBTB40.H120.TM10JET	120
DBTB40.H90.TM12JET	90
DBTB40.H120.TM12JET	120
DBTB40.H90.TM14JET	90
DBTB40.H120.TM14JET	120
DBTB40.H90.TM16JET	90
DBTB40.H120.TM16JET	120
DBTB40.H90.TM18JET	90
DBTB40.H120.TM18JET	120
DBTB40.H90.TM20JET	90
DBTB40.H120.TM20JET	120
DBTB40.H100.TM25JET	100
DBTB40.H100.TM32JET	100

ATTACCO A DOPPIO CONTATTO DOUBLE CONTACT SHANK



Articolo	H
DBTB50.H100.TM6JET	100
DBTB50.H130.TM6JET	130
DBTB50.H100.TM8JET	100
DBTB50.H130.TM8JET	130
DBTB50.H100.TM10JET	100
DBTB50.H130.TM10JET	130
DBTB50.H100.TM12JET	100
DBTB50.H130.TM12JET	130
DBTB50.H100.TM14JET	100
DBTB50.H130.TM14JET	130
DBTB50.H100.TM16JET	100
DBTB50.H130.TM16JET	130
DBTB50.H100.TM18JET	100
DBTB50.H130.TM18JET	130
DBTB50.H100.TM20JET	100
DBTB50.H130.TM20JET	130
DBTB50.H100.TM25JET	100
DBTB50.H130.TM25JET	130
DBTB50.H100.TM32JET	100
DBTB50.H130.TM32JET	130

Altre lunghezze fornibili a richiesta
Other lengths available on request



3 DIVERSE MODALITÀ DI UTILIZZO 3 DIFFERENT APPLICATIONS

Senza montare i grani in dotazione si ha la massima portata del liquido refrigerante
Not using supplied plugs you have maximum flow of coolant

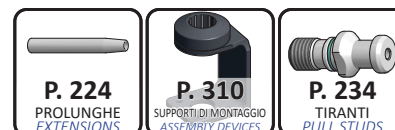
Con l'utilizzo dei grani forati aumenta la pressione - ideale per lavorazioni ad alte velocità
Using plugs with hole the pressure increases - it's used for high speed works

Con l'utilizzo dei grani di chiusura si può lavorare con utensili con fori per il refrigerante
Mounting sealing plugs tools with coolant through can be used

Profondità regolabile: **L2= 10mm**
Adjustable depth:

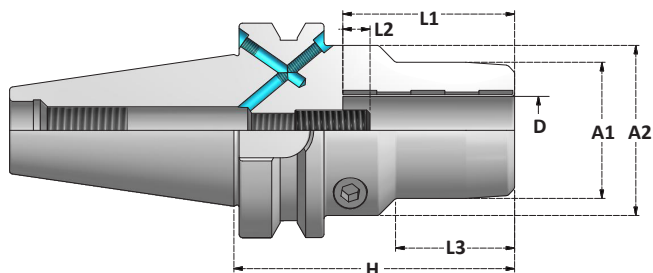
	D	L	A1	A2
...TM6	6	36	21	27
...TM8	8	36	21	27
...TM10	10	41	24	32
...TM12	12	46	24	32
...TM14	14	46	24	32
...TM16	16	49	24	32
...TM18	18	49	33	42
...TM20	20	51	33	42
...TM25	25	57	44	53
...TM32	32	61	44	53

ACCESSORI - ACCESSORIES



**MANDRINI IDRAULICI**
HYDRAULIC CHUCKS**G2,5**

25000 r.p.m.

SCHEDA TECNICA
TECHNICAL DATA
HY P. 342

	D	L1	A1	A2
...HY6	6	37	26	49,5
...HY8	8	37	28	49,5
...HY10	10	41	30	49,5
...HY12	12	46	32	49,5
...HY14	14	46	34	49,5

	D	L1	A1	A2
...HY16	16	49	38	49,5
...HY18	18	49	40	49,5
...HY20	20	51	42	49,5
...HY25	25	57	49,5	55
...HY32	32	61	56	63

Profondità regolabile: **L2= 10mm**
Adjustable depth:

Articolo	H	L3
BTB40.H90.HY6	90	40
BTB40.H140.HY6	140	40
BTB40.H90.HY8	90	40
BTB40.H140.HY8	140	40
BTB40.H90.HY10	90	40
BTB40.H140.HY10	140	40
BTB40.H90.HY12	90	40
BTB40.H140.HY12	140	40
BTB40.H90.HY14	90	40
BTB40.H140.HY14	140	40
BTB40.H90.HY16	90	46
BTB40.H140.HY16	140	46
BTB40.H90.HY18	90	46
BTB40.H140.HY18	140	46
BTB40.H73.HY20	73	-
BTB40.H90.HY20	90	46
BTB40.H140.HY20	140	46
BTB40.H90.HY25	90	76
BTB40.H140.HY25	140	91
BTB40.H90.HY32	90	76
BTB40.H140.HY32	140	91



Articolo	H	L3
BTB50.H110.HY6	110	40
BTB50.H140.HY6	140	40
BTB50.H110.HY8	110	40
BTB50.H140.HY8	140	40
BTB50.H110.HY10	110	40
BTB50.H140.HY10	140	40
BTB50.H110.HY12	110	40
BTB50.H140.HY12	140	40
BTB50.H110.HY14	110	40
BTB50.H140.HY14	140	40
BTB50.H110.HY16	110	46
BTB50.H140.HY16	140	46
BTB50.H110.HY18	110	46
BTB50.H140.HY18	140	46
BTB50.H110.HY20	110	46
BTB50.H140.HY20	140	46
BTB50.H110.HY25	110	55
BTB50.H140.HY25	140	55
BTB50.H90.HY32	90	-
BTB50.H115.HY32	115	55
BTB50.H140.HY32	140	55

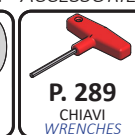
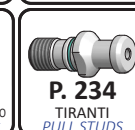
Forza di serraggio
Clamping force

HY6	12Nm
HY8	30Nm
HY10	40Nm
HY12	70Nm
HY14	100Nm
HY16	135Nm
HY18	180Nm
HY20	220Nm
HY25	500Nm
HY32	700Nm

KIT - MANDRINO, CHIAVE E PINZE

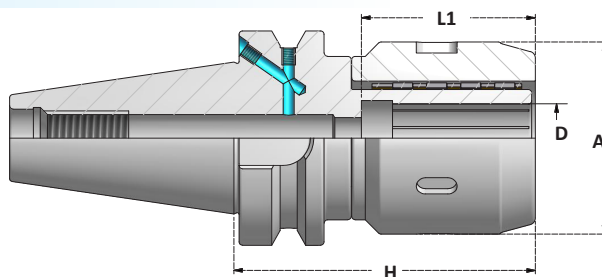
KIT - TOOLHOLDERS, WRENCH AND COLLETS

Articolo	Pinze Collets	Ø Pinze Ø Collets	Mandrino con chiave Toolholder with wrench
BX.BTB40.HY12	6SR12	D4 D6 D8 D10	BTB40.H90.HY12
BX.BTB40.HY20	6SR20	D6 D8 D10 D12 D16	BTB40.H90.HY20
BX.BTB40.HY32	6SR32	D6 D8 D10 D12 D16 D20 D25	BTB40.H90.HY32
BX.BTB50.HY12	6SR12	D4 D6 D8 D10	BTB50.H110.HY12
BX.BTB50.HY20	6SR20	D6 D8 D10 D12 D16	BTB50.H110.HY20
BX.BTB50.HY32	6SR32	D6 D8 D10 D12 D16 D20 D25	BTB50.H115.HY32

ACCESSORI - ACCESSORIES**P. 277**
PINZE
COLLETS**P. 289**
CHIAVI
WRENCHES**P. 310**
SUPPORTI DI MONTAGGIO
ASSEMBLY DEVICES**P. 234**
TIRANTI
PULL STUDS



MANDRINI A FORTE SERRAGGIO
POWER MILLING CHUCKS



SCHEDA TECNICA
TECHNICAL DATA
FS P. 344



G6,3
12000 r.p.m.



0,005



CANALINI
CHANNELS



CHIAVE INCLUSA
WRENCH INCLUDED



ATTACCO A DOPPIO CONTATTO
DOUBLE CONTACT SHANK

	D	A	L1
...FS20	20	66	59,3
...FS32	32	69	71,7



Articolo	H
BTB40.H100.FS20	100
BTB40.H100.FS32	100



Articolo	H
DBT40.H100.FS20	100
DBT40.H100.FS32	100

Forza di serraggio
Clamping force

FS20	500Nm
FS32	1000Nm

Articolo	H
BTB50.H105.FS20	105
BTB50.H105.FS32	105



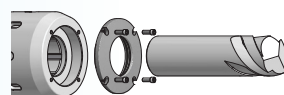
Articolo	H
DBT50.H105.FS20	105
DBT50.H105.FS32	105

Serrare la ghiera di bloccaggio
fino al finecorsa
Tighten the locking nut
up to the limit

DISCHI DI TENUTA PER MANDRINI A FORTE SERRAGGIO
SEALED CAPS FOR POWER MILLING CHUCKS

DISCHI DI TENUTA PER DIAMETRO NOMINALE
SEALED CAPS FOR NOMINAL DIAMETER

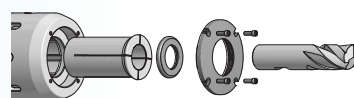
Articolo	D
CFS20.D20	20
CFS32.D32	32



A TENUTA
SEALED

DISCHI DI TENUTA PER L'UTILIZZO DELLE PINZE DI RIDUZIONE
SEALED CAPS FOR REDUCTION COLLETSE USING

Articolo	D	RG Range
CFS20.RG	RG32	D4÷D16
CFS32.RG	RG40	D6÷D25



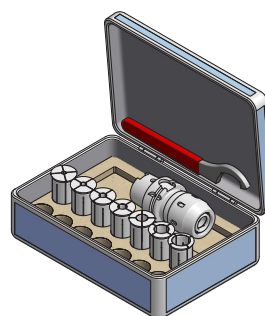
SCHEDA TECNICA
TECHNICAL DATA
FS P. 344



P. 284
DISCHETTI RG
RG SEALED DISCS

KIT - MANDRINO, CHIAVE E PINZE
KIT - TOOLHOLDER, WRENCH AND COLLETS

Articolo	Pinze Collets	Ø Pinze Ø Collets	Mandrino con chiave Toolholder with wrench
BX.BTB40.FS20	4SR20	D6 D8 D10 D12 D16	BTB40.H100.FS20
BX.BTB40.FS32	4SR32	D6 D8 D10 D12 D16 D20 D25	BTB40.H100.FS32
BX.BTB50.FS20	4SR20	D6 D8 D10 D12 D16	BTB50.H105.FS20
BX.BTB50.FS32	4SR32	D6 D8 D10 D12 D16 D20 D25	BTB50.H105.FS32
Articolo	Pinze Collets	Ø Pinze Ø Collets	Mandrino con chiave Toolholder with wrench
BX.DBT40.FS20	4SR20	D6 D8 D10 D12 D16	DBT40.H100.FS20
BX.DBT40.FS32	4SR32	D6 D8 D10 D12 D16 D20 D25	DBT40.H100.FS32
BX.DBT50.FS20	4SR20	D6 D8 D10 D12 D16	DBT50.H105.FS20
BX.DBT50.FS32	4SR32	D6 D8 D10 D12 D16 D20 D25	DBT50.H105.FS32



ACCESSORI - ACCESSORIES



P. 276
PINZE
COLLETS



P. 289
CHIAVI
WRENCHES



P. 310
SUPPORTI DI MONTAGGIO
ASSEMBLY DEVICES



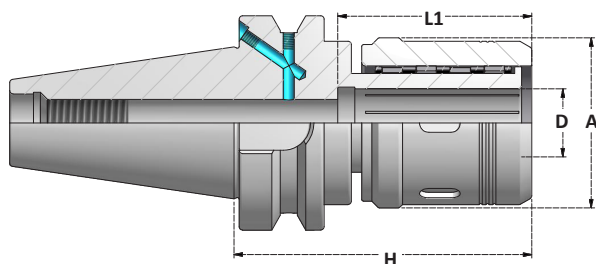
P. 234
TIRANTI
PULL STUDS





MANDRINI A FORTE SERRAGGIO - ECO LINE

POWER MILLING CHUCKS - ECO LINE



G6,3

12000 r.p.m.



0,010



Articolo	H
BTB40.H95.MC20	95
BTB40.H105.MC32	105

Articolo	H
BTB50.H105.MC20	105
BTB50.H110.MC32	110

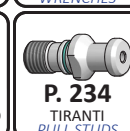
	D	A	L1	Momento torcente consigliato Recommended tightening torque
...MC20	20	58	65	60Nm
...MC32	32	73	80	70Nm

Forza di serraggio
Clamping force

MC20 **350Nm**

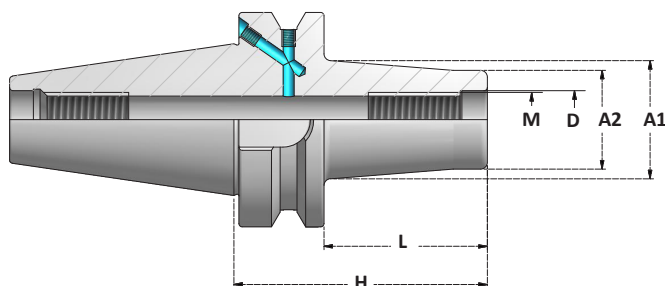
MC32 **450Nm**

ACCESSORI - ACCESSORIES



**MANDRINI PER FRESE CON ATTACCO FILETTATO**
SCREW IN MILL CHUCKS**G2,5**

25000 r.p.m.

SCHEDA TECNICA
TECHNICAL DATA
CPY | P. 346

	M	D	A2	Momento torcente consigliato <i>Recommended tightening torque</i>
M8CPY	M8	8,5	13	25Nm
M10CPY	M10	10,5	18	40Nm
M12CPY	M12	12,5	21	60Nm
M16CPY	M16	17	29	80Nm

ATTACCO STANDARD*STANDARD SHANK*

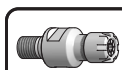
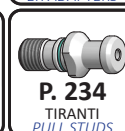
Articolo	H	L	A1
BTB40.H63.M8CPY	63	36	15
BTB40.H83.M8CPY	83	56	23
BTB40.H103.M8CPY	103	76	23
BTB40.H123.M8CPY	123	96	25
BTB40.H63.M10CPY	63	36	20
BTB40.H83.M10CPY	83	56	25
BTB40.H103.M10CPY	103	76	28
BTB40.H123.M10CPY	123	96	28
BTB40.H153.M10CPY	153	126	34
BTB40.H63.M12CPY	63	36	24
BTB40.H83.M12CPY	83	56	24
BTB40.H103.M12CPY	103	76	31
BTB40.H123.M12CPY	123	96	31
BTB40.H153.M12CPY	153	126	38
BTB40.H183.M12CPY	183	156	42
BTB40.H63.M16CPY	63	36	34
BTB40.H83.M16CPY	83	56	34
BTB40.H103.M16CPY	103	76	34
BTB40.H123.M16CPY	123	96	39
BTB40.H153.M16CPY	153	126	39
BTB40.H183.M16CPY	183	156	39

**ATTACCO A DOPPIO CONTATTO***DOUBLE CONTACT SHANK*

Articolo	H	L	A1
DBTB40.H52.M12CPY	52	25	24
DBTB40.H102.M12CPY	102	75	31
DBTB40.H127.M12CPY	127	100	33
DBTB40.H52.M16CPY	52	25	29
DBTB40.H77.M16CPY	77	50	34
DBTB40.H102.M16CPY	102	75	34
DBTB40.H127.M16CPY	127	100	36



Articolo	H	L	A1
BTB50.H104.M10CPY	104	66	28
BTB50.H154.M10CPY	154	116	28
BTB50.H104.M12CPY	104	66	32
BTB50.H154.M12CPY	154	116	32
BTB50.H104.M16CPY	104	66	36
BTB50.H154.M16CPY	154	116	40

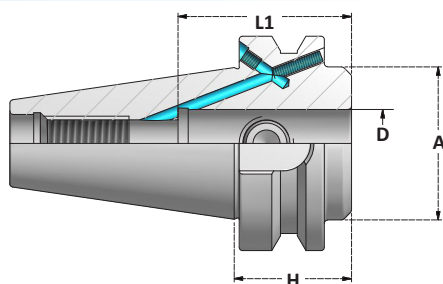
ACCESSORI - ACCESSORIES**P. 201**
RIDUZIONI ER
ER ADAPTERS**P. 310**
SUPPORTI DI MONTAGGIO
ASSEMBLY DEVICES**P. 234**
TIRANTI
PULL STUDS

**MANDRINI PORTAFRESA WELDON - DIN1835-2***END MILL HOLDERS WELDON - DIN1835-2*

WE	EXTRACORTI
Pag. 131	<i>STUB LENGTH</i>
WE	ATTACCO DOPPIO CONTATTO
Pag. 132	<i>DOUBLE CONTACT SHANK</i>
WE	STANDARD
Pag. 133-134	<i>STANDARD</i>
WE RG	A CENTRATURA REGOLABILE
Pag. 135	<i>ADJUSTABLE RUNOUT</i>
WE C	CON CANALI DI LUBRIFICAZIONE
Pag. 136	<i>WITH COOLANT CHANNELS</i>
WHN	WHISTLE NOTCH - GRANI INCLINATI A 2° (DIN 1835-2 Form E)
Pag. 137	<i>WHISTLE NOTCH - 2° INCLINED SCREWS (DIN 1835-2 Form E)</i>

BT

WE

DIN 1835-2 Form B**MANDRINI PORTAFRESA WELDON - EXTRACORTI***END MILL HOLDERS WELDON - STUB LENGTH*

SCHEDA TECNICA
TECHNICAL DATA
WE P. 347

Per utensili con gambo secondo
normativa **DIN1835-1 Form B.**

*For tools with shank according to
norm DIN1835-1 Form B*

Articolo	H	A	Grano 1 Screw 1	Grano 2 Screw 2	Fig
BT30.H32.WE6	32	25	GR.WE6	/	1
BT30.H32.WE8	32	28	GR.WE8	/	1
BT30.H32.WE10	32	35	GR.WE10	/	1
BT30.H32.WE12	32	42	GR.WEC12-14	/	1
BT30.H32.WE14	32	44	GR.WEC12-14	/	1
BT30.H35.WE16	35	40	GR.WEC16	/	1
BT30.H35.WE20	35	43	GR.WEC20	/	1

	D	L1
...WE6	6	37
...WE8	8	37
...WE10	10	41
...WE12	12	46
...WE14	14	46
...WE16	16	49
...WE20	20	51
...WE25	25	59
...WE32	32	63
...WE40	40	73

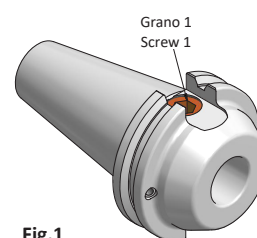


Fig.1

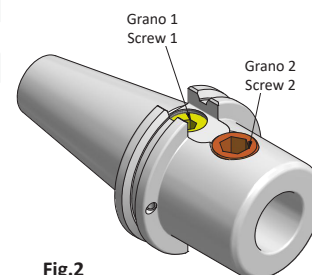
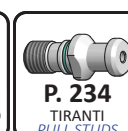
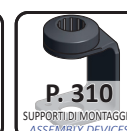


Fig.2

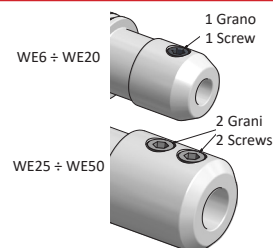
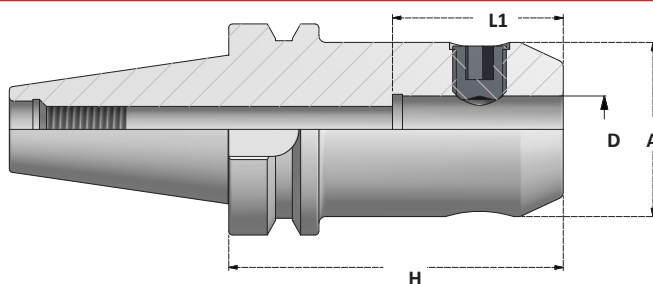
Articolo	H	A	Grano 1 Screw 1	Grano 2 Screw 2	Fig
BTB40.H35.WE16	35	43,5	GR.WEC16	/	1
BTB40.H35.WE20	35	43,5	GR.WEC20	/	1
BTB40.H35.WE25	35	43,5	GR.WEC20	/	1
BTB40.H60.WE25	60	50	GR.WEC25-32	GR.WEC25	2
BTB40.H40.WE32	40	60	GR.WEC25-32	/	1
BTB40.H70.WE32	70	72	GR.WEC25-32	GR.WE32-40	2

Articolo	H	A	Grano 1 Screw 1	Grano 2 Screw 2	Fig
BTB50.H44.WE16	44	48	GR.WE16-18	/	1
BTB50.H44.WE20	44	60	GR.WE20	/	1
BTB50.H44.WE25	44	70	GR.WE25	/	1
BTB50.H44.WE32	44	70	GR.WE32-40	/	1
BTB50.H44.WE40	44	70	GR.WEC32-40	/	1

ACCESSORI - ACCESSORIES

**MANDRINI A DOPPIO CONTATTO PORTAFRESE WELDON**
DOUBLE CONTACT END MILL HOLDERS WELDON**G2,5**

25000 r.p.m.

SCHEDA TECNICA
TECHNICAL DATA
WE P. 347**ATTACCO A DOPPIO CONTATTO**
DOUBLE CONTACT SHANK

Articolo	H
DBT30.H60.WE6	60
DBT30.H60.WE8	60
DBT30.H60.WE10	60
DBT30.H60.WE12	60
DBT30.H75.WE16	75
DBT30.H75.WE20	75
DBT30.H90.WE25	90

ATTACCO A DOPPIO CONTATTO
DOUBLE CONTACT SHANK

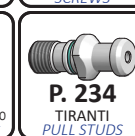
Articolo	H
DBT50.H63.WE6	63
DBT50.H63.WE8	63
DBT50.H63.WE10	63
DBT50.H80.WE12	80
DBT50.H80.WE16	80
DBT50.H80.WE20	80
DBT50.H100.WE25	100
DBT50.H105.WE32	105
DBT50.H120.WE40	120
DBT50.H125.WE50	125

	D	L1	A	Grano Screw
...WE6	6	37	25	GR.WE6
...WE8	8	37	28	GR.WE8
...WE10	10	41	35	GR.WE10
...WE12	12	46	42	GR.WE12-14
...WE16	16	49	48	GR.WE16-18
...WE20	20	51	52	GR.WE20

ATTACCO A DOPPIO CONTATTO
DOUBLE CONTACT SHANK

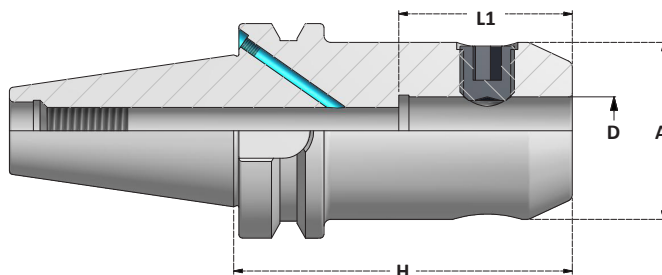
Articolo	H
DBT40.H50.WE6	50
DBT40.H100.WE6	100
DBT40.H50.WE8	50
DBT40.H100.WE8	100
DBT40.H63.WE10	63
DBT40.H100.WE10	100
DBT40.H63.WE12	63
DBT40.H100.WE12	100
DBT40.H63.WE16	63
DBT40.H100.WE16	100
DBT40.H63.WE20	63
DBT40.H100.WE20	100
DBT40.H100.WE25	100
DBT40.H100.WE32	100

	D	L1	A	Grani Screws
..WE25	25	59	65	2x GR.WE25
..WE32	32	63	72	2x GR.WE32-40
..WE40	40	73	80	2x GR.WE32-40
..WE50	50	83	100	2x GR.WE50

ACCESSORI - ACCESSORIES**P. 225**
RIDUZIONI
ADAPTERS**P. 303**
GRANI
SCREWS**P. 310**
SUPPORTI DI MONTAGGIO
ASSEMBLY DEVICES**P. 234**
TIRANTI
PULL STUDS

**MANDRINI PORTAFRESA WELDON**
END MILL HOLDERS WELDON**G6,3**

15000 r.p.m.

SCHEDA TECNICA
TECHNICAL DATA
WE | P. 347

Articolo	H
BT30.H50.WE6	50
BT30.H100.WE6	100
BT30.H50.WE8	50
BT30.H100.WE8	100
BT30.H50.WE10	50
BT30.H100.WE10	100
BT30.H60.WE12	60
BT30.H100.WE12	100



Articolo	H
BT30.H60.WE14	60
BT30.H100.WE14	100
BT30.H63.WE16	63
BT30.H100.WE16	100
BT30.H63.WE18	63
BT30.H100.WE18	100
BT30.H63.WE20	63
BT30.H100.WE20	100



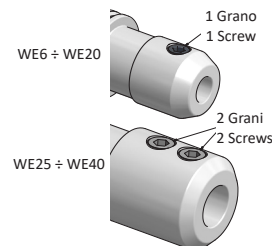
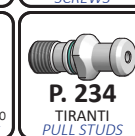
Articolo	H
BTB40.H50.WE6	50
BTB40.H100.WE6	100
BTB40.H130.WE6	130
BTB40.H160.WE6	160
BTB40.H50.WE8	50
BTB40.H100.WE8	100
BTB40.H130.WE8	130
BTB40.H160.WE8	160
BTB40.H63.WE10	63
BTB40.H100.WE10	100
BTB40.H130.WE10	130
BTB40.H160.WE10	160
BTB40.H63.WE12	63
BTB40.H100.WE12	100
BTB40.H130.WE12	130
BTB40.H160.WE12	160
BTB40.H63.WE14	63
BTB40.H100.WE14	100
BTB40.H130.WE14	130
BTB40.H160.WE14	160



Articolo	H
BTB40.H63.WE16	63
BTB40.H100.WE16	100
BTB40.H130.WE16	130
BTB40.H160.WE16	160
BTB40.H200.WE16	200
BTB40.H63.WE18	63
BTB40.H100.WE18	100
BTB40.H130.WE18	130
BTB40.H160.WE18	160
BTB40.H63.WE20	63
BTB40.H100.WE20	100
BTB40.H130.WE20	130
BTB40.H160.WE20	160
BTB40.H200.WE20	200
BTB40.H90.WE25	90
BTB40.H130.WE25	130
BTB40.H160.WE25	160
BTB40.H200.WE25	200
BTB40.H100.WE32	100
BTB40.H130.WE32	130
BTB40.H160.WE32	160
BTB40.H200.WE32	200
BTB40.H120.WE40	120

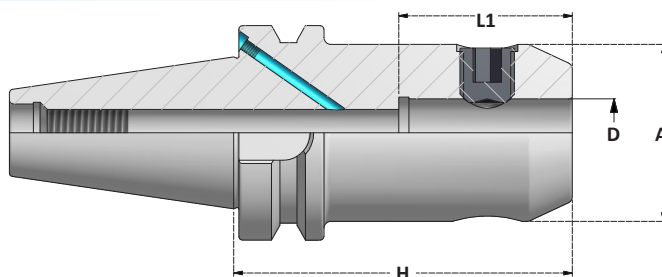
	D	L1	A	Grano Screw
...WE6	6	37	25	GR.WE6
...WE8	8	37	28	GR.WE8
...WE10	10	41	35	GR.WE10
...WE12	12	46	42	GR.WE12-14
...WE14	14	46	44	GR.WE12-14
...WE16	16	49	48	GR.WE16-18
...WE18	18	49	50	GR.WE16-18
...WE20	20	51	52	GR.WE20

	D	L1	A	Grani Screws
..WE25	25	59	65	2x GR.WE25
..WE32	32	63	72	2x GR.WE32-40
..WE40	40	73	80	2x GR.WE32-40
..WE50	50	83	100	2x GR.WE50

**ACCESSORI - ACCESSORIES**

**MANDRINI PORTAFRESA WELDON**
END MILL HOLDERS WELDON**G6,3**

15000r.p.m.

SCHEDA TECNICA
TECHNICAL DATA
WE | P. 347

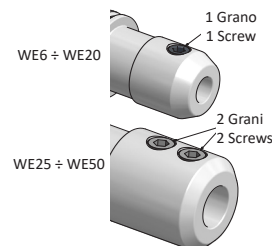
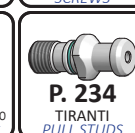
Articolo	H
BTB50.H63.WE6	63
BTB50.H100.WE6	100
BTB50.H130.WE6	130
BTB50.H160.WE6	160
BTB50.H200.WE6	200
BTB50.H63.WE8	63
BTB50.H100.WE8	100
BTB50.H130.WE8	130
BTB50.H160.WE8	160
BTB50.H200.WE8	200
BTB50.H80.WE10	80
BTB50.H100.WE10	100
BTB50.H130.WE10	130
BTB50.H160.WE10	160
BTB50.H200.WE10	200
BTB50.H80.WE12	80
BTB50.H100.WE12	100
BTB50.H130.WE12	130
BTB50.H160.WE12	160
BTB50.H200.WE12	200
BTB50.H80.WE14	80
BTB50.H100.WE14	100
BTB50.H130.WE14	130
BTB50.H160.WE14	160
BTB50.H200.WE14	200

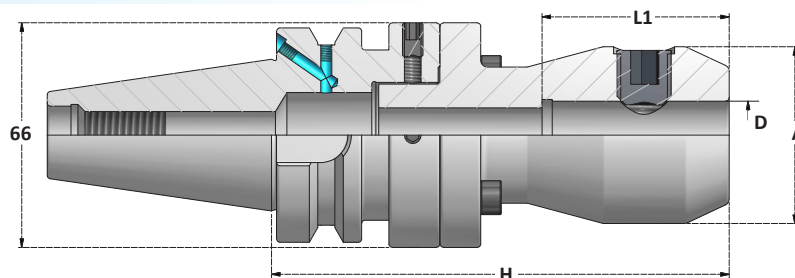


Articolo	H
BTB50.H80.WE16	80
BTB50.H100.WE16	100
BTB50.H130.WE16	130
BTB50.H160.WE16	160
BTB50.H200.WE16	200
BTB50.H80.WE18	80
BTB50.H100.WE18	100
BTB50.H130.WE18	130
BTB50.H160.WE18	160
BTB50.H200.WE18	200
BTB50.H80.WE20	80
BTB50.H100.WE20	100
BTB50.H130.WE20	130
BTB50.H160.WE20	160
BTB50.H200.WE20	200
BTB50.H250.WE20	250
BTB50.H100.WE25	100
BTB50.H130.WE25	130
BTB50.H160.WE25	160
BTB50.H200.WE25	200
BTB50.H250.WE25	250
BTB50.H105.WE32	105
BTB50.H130.WE32	130
BTB50.H160.WE32	160
BTB50.H200.WE32	200
BTB50.H250.WE32	250
BTB50.H120.WE40	120
BTB50.H160.WE40	160
BTB50.H200.WE40	200
BTB50.H125.WE50	125

	D	L1	A	Grano Screw
...WE6	6	37	25	GR.WE6
...WE8	8	37	28	GR.WE8
...WE10	10	41	35	GR.WE10
...WE12	12	46	42	GR.WE12-14
...WE14	14	46	44	GR.WE12-14
...WE16	16	49	48	GR.WE16-18
...WE18	18	49	50	GR.WE16-18
...WE20	20	51	52	GR.WE20

	D	L1	A	Grani Screws
..WE25	25	59	65	2x GR.WE25
..WE32	32	63	72	2x GR.WE32-40
..WE40	40	73	80	2x GR.WE32-40
..WE50	50	83	100	2x GR.WE50

**ACCESSORI - ACCESSORIES**

**MANDRINI PORTAFRESA WELDON A CENTRATURA REGOLABILE**
RUNOUT ADJUSTABLE END MILL HOLDERS WELDON

±0,1mm
Centratura regolabile
Adjustable runout

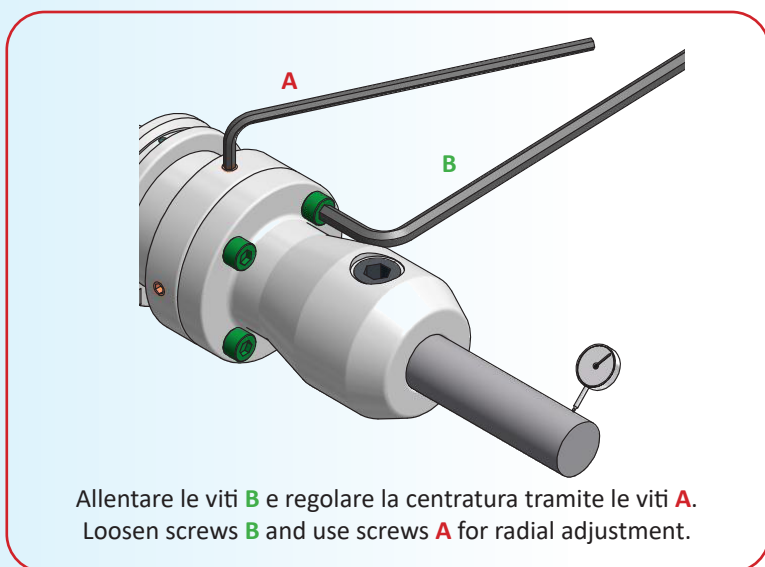
SCHEDA TECNICA
TECHNICAL DATA
WE | P. 347

Articolo	H
BTB40.H100.WE6RG	100
BTB40.H100.WE8RG	100
BTB40.H100.WE10RG	100
BTB40.H110.WE12RG	110
BTB40.H110.WE14RG	110
BTB40.H130.WE16RG	130
BTB40.H130.WE18RG	130
BTB40.H135.WE20RG	135

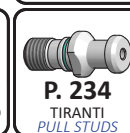
	D	L1	A	Grano Screw
...WE6	6	37	25	GR.WE6
...WE8	8	37	28	GR.WE8
...WE10	10	41	35	GR.WE10
...WE12	12	46	42	GR.WE12-14
...WE14	14	46	44	GR.WE12-14
...WE16	16	49	48	GR.WE16-18
...WE18	18	49	50	GR.WE16-18
...WE20	20	51	52	GR.WE20



Articolo	H
BTB50.H110.WE6RG	110
BTB50.H110.WE8RG	110
BTB50.H110.WE10RG	110
BTB50.H120.WE12RG	120
BTB50.H120.WE14RG	120
BTB50.H140.WE16RG	140
BTB50.H140.WE18RG	140
BTB50.H145.WE20RG	145



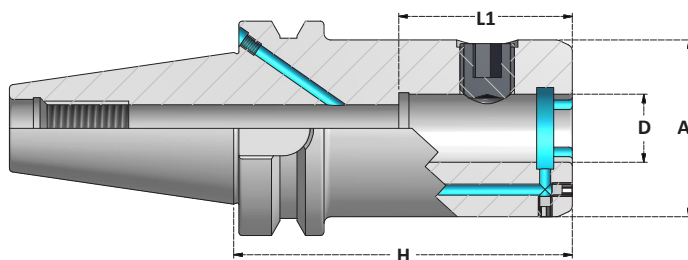
Allentare le viti **B** e regolare la centratura tramite le viti **A**.
Loosen screws **B** and use screws **A** for radial adjustment.

ACCESSORI - ACCESSORIES



MANDRINI PORTAFRESA WELDON CON CANALI DI LUBRIFICAZIONE END MILL HOLDERS WELDON WITH COOLANT CHANNELS

G6,3
15000r.p.m.



SCHEDA TECNICA
TECHNICAL DATA
WE P. 347



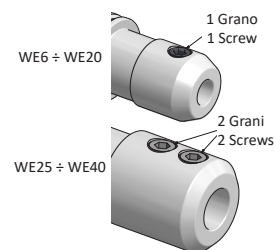
Articolo	H
BTB40.H65.WE6C	65
BTB40.H65.WE8C	65
BTB40.H65.WE10C	65
BTB40.H65.WE12C	65
BTB40.H65.WE14C	65
BTB40.H65.WE16C	65
BTB40.H65.WE18C	65
BTB40.H65.WE20C	65
BTB40.H100.WE25C	100
BTB40.H100.WE32C	100
BTB40.H120.WE40C	120

	D	L1	A	Grano Screw
...WE6	6	37	25	GR.WE6
...WE8	8	37	28	GR.WE8
...WE10	10	41	35	GR.WE10
...WE12	12	46	42	GR.WE12-14
...WE14	14	46	44	GR.WE12-14
...WE16	16	49	48	GR.WE16-18
...WE18	18	49	50	GR.WE16-18
...WE20	20	51	52	GR.WE20

	D	L1	A	Grani Screws
..WE25	25	59	65	2x GR.WE25
..WE32	32	63	72	2x GR.WE32-40
..WE40	40	73	80	2x GR.WE32-40

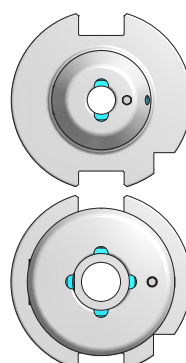
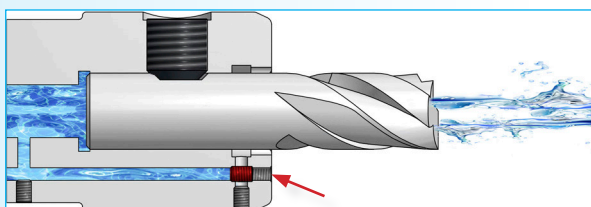
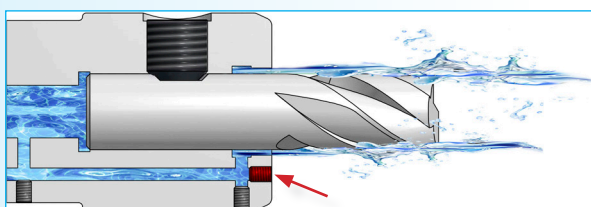


Articolo	H
BTB50.H80.WE6C	80
BTB50.H80.WE8C	80
BTB50.H80.WE10C	80
BTB50.H80.WE12C	80
BTB50.H80.WE14C	80
BTB50.H80.WE16C	80
BTB50.H80.WE18C	80
BTB50.H80.WE20C	80
BTB50.H100.WE25C	100
BTB50.H105.WE32C	105
BTB50.H110.WE40C	110



Regolando il grano si può scegliere se indirizzare il liquido refrigerante ai fori del mandrino o attraverso l'utensile.

Lock screw for coolant through tool.
Unlock screw for coolant through toolholder.



WE6C ÷ WE14C

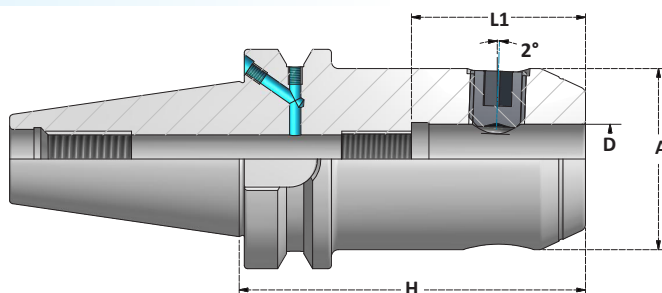
WE16C ÷ WE40C

ACCESSORI - ACCESSORIES



**MANDRINI PORTAFRESA WHISTLE NOTCH**
END MILL HOLDERS WHISTLE NOTCH**G6,3**

15000 r.p.m.

SCHEDA TECNICA
TECHNICAL DATA
WE | P. 347

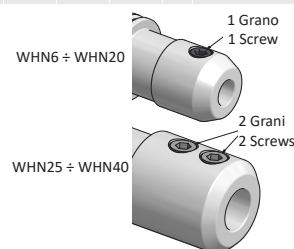
Articolo	H
BTB40.H50.WHN6	50
BTB40.H50.WHN8	50
BTB40.H63.WHN10	63
BTB40.H63.WHN12	63
BTB40.H63.WHN14	63
BTB40.H63.WHN16	63
BTB40.H63.WHN18	63
BTB40.H63.WHN20	63
BTB40.H90.WHN25	90
BTB40.H100.WHN32	100

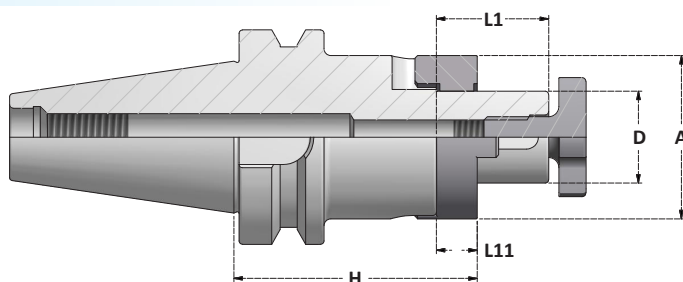


Articolo	H
BTB50.H63.WHN6	63
BTB50.H63.WHN8	63
BTB50.H63.WHN10	63
BTB50.H80.WHN12	80
BTB50.H80.WHN14	80
BTB50.H80.WHN16	80
BTB50.H80.WHN18	80
BTB50.H80.WHN20	80
BTB50.H100.WHN25	100
BTB50.H105.WHN32	105
BTB50.H120.WHN40	120

	D	L1	A	Grano Screw
...WHN6	6	37	25	GR.WE6
...WHN8	8	37	28	GR.WE8
...WHN10	10	41	35	GR.WE10
...WHN12	12	46	42	GR.WE12-14
...WHN14	14	46	44	GR.WE12-14
...WHN16	16	49	48	GR.WE16-18
...WHN18	18	49	50	GR.WE16-18
...WHN20	20	51	52	GR.WE20

	D	L1	A	Grani Screws
..WHN25	25	59	65	2x GR.WE25
..WHN32	32	63	72	2x GR.WE32-40
..WHN40	40	73	80	2x GR.WE32-40

**ACCESSORI - ACCESSORIES****P. 303**
GRANI
SCREWS**P. 310**
SUPPORTI DI MONTAGGIO
ASSEMBLY DEVICES**P. 234**
TIRANTI
PULL STUDS

**MANDRINI PORTAFRESA COMBINATI**
COMBI SHELL MILL HOLDERSSCHEDA TECNICA
TECHNICAL DATA
D C | P. 348

Articolo	H
BT30.H43.D16C	43
BT30.H50.D22C	50
BT30.H50.D27C	50
BT30.H60.D32C	60



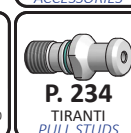
Articolo	H
BT40.H55.D16C	55
BT40.H100.D16C	100
BT40.H130.D16C	130
BT40.H160.D16C	160
BT40.H200.D16C	200
BT40.H55.D22C	55
BT40.H100.D22C	100
BT40.H130.D22C	130
BT40.H160.D22C	160
BT40.H200.D22C	200
BT40.H55.D27C	55
BT40.H100.D27C	100
BT40.H130.D27C	130
BT40.H160.D27C	160
BT40.H200.D27C	200
BT40.H60.D32C	60
BT40.H100.D32C	100
BT40.H130.D32C	130
BT40.H160.D32C	160
BT40.H200.D32C	200
BT40.H60.D40C	60
BT40.H100.D40C	100
BT40.H130.D40C	130
BT40.H160.D40C	160
BT40.H200.D40C	200



Articolo	H
BT50.H70.D16C	70
BT50.H100.D16C	100
BT50.H130.D16C	130
BT50.H160.D16C	160
BT50.H70.D22C	70
BT50.H100.D22C	100
BT50.H130.D22C	130
BT50.H160.D22C	160
BT50.H70.D27C	70
BT50.H100.D27C	100
BT50.H130.D27C	130
BT50.H160.D27C	160
BT50.H70.D32C	70
BT50.H100.D32C	100
BT50.H130.D32C	130
BT50.H160.D32C	160
BT50.H70.D40C	70
BT50.H100.D40C	100
BT50.H130.D40C	130
BT50.H160.D40C	160

	D	A	L1	L11	ATR	VTC	CHV
D16C	16	32	27	10	ATR.D16	VTC.D16	CHV.D16
D22C	22	40	31	12	ATR.D22	VTC.D22	CHV.D22
D27C	27	48	33	12	ATR.D27	VTC.D27	CHV.D27
D32C	32	58	38	14	ATR.D32	VTC.D32	CHV.D32
D40C	40	70	41	14	ATR.D40	VTC.D40	CHV.D40

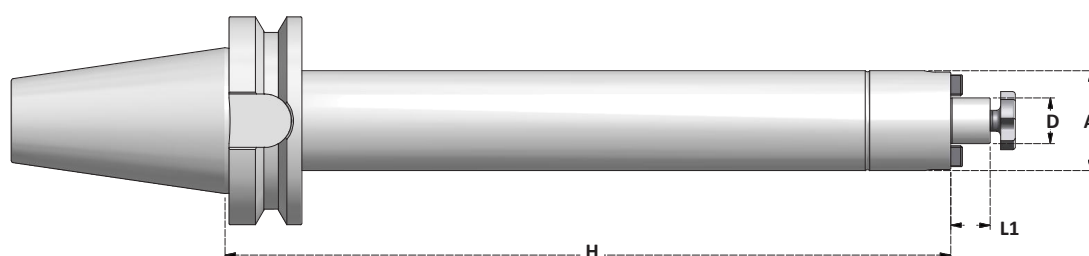
ACCESSORI - ACCESSORIES

**P. 304-305**
ACCESSORI
ACCESSORIES**P. 310**
SUPPORTI DI MONTAGGIO
ASSEMBLY DEVICES**P. 234**
TIRANTI
PULL STUDS

**MAS 403 (JIS B 6339) - BT****MANDRINI PORTAFRESA FISSI**
SHELL MILL HOLDERS

D SAV	ANTIVIBRANTI
Pag. 139	<i>DAMPING VIBRATIONS</i>
D S	ATTACCO DOPPIO CONTATTO
Pag. 140	<i>DOUBLE CONTACT SHANK</i>
D S	STANDARD
Pag. 141	<i>STANDARD</i>

BT D SAV

MANDRINI PORTAFRESA FISSI ANTIVIBRANTI
DAMPING VIBRATIONS SHELL MILL HOLDERS

SCHEDA TECNICA	TECHNICAL DATA
D S	P. 349

Articolo	H
BTB50.H350.D22SAV	350
BTB50.H400.D22SAV	400
BTB50.H500.D22SAV	500
BTB50.H350.D27SAV	350
BTB50.H400.D27SAV	400
BTB50.H500.D27SAV	500

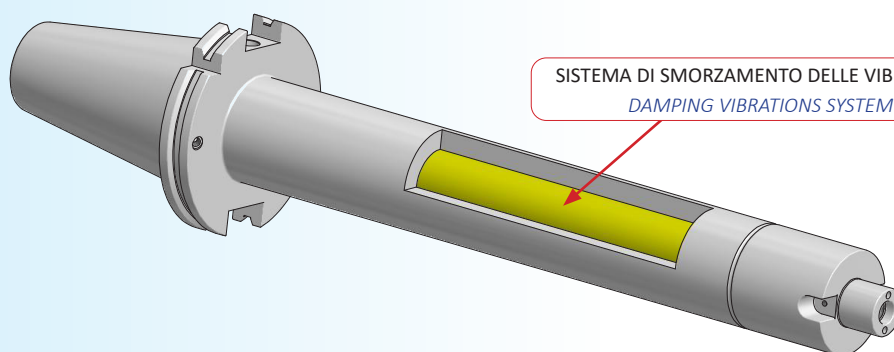
	D	A	L1	TTR	VTC
...D22S	22	48	19	TTR.D22	VTC.D22
...D27S	27	58	21	TTR.D27	VTC.D27

I mandrini portafresa antivibranti sono dotati di un sistema interno che smorza le vibrazioni trasmesse dalla fresa all'attacco. In questo modo viene prolungata la durata dell'utensile e del mandrino macchina.

Il sistema antivibrante consente di lavorare con sporgenze molto lunghe mantenendo parametri di taglio elevati. Le lavorazioni sono più silenziose e stabili, e permettono di ottenere una migliore finitura superficiale.

Damping vibrations shell mill holders have an internal system that dampens the vibrations transmitted from the mill to the shank. In this way, the life of the tool and the machine spindle is extended.

Damping vibrations system allows to work with very long overhangs while maintaining high cutting parameters. The processes are quieter and more stable, and allow to obtain a better surface finish.

**ACCESSORI - ACCESSORIES**



MANDRINI A DOPPIO CONTATTO PORTAFRESA FISSI DOUBLE CONTACT SHELL MILL HOLDERS

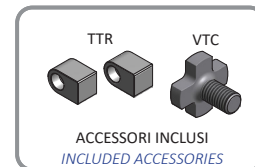


G2,5

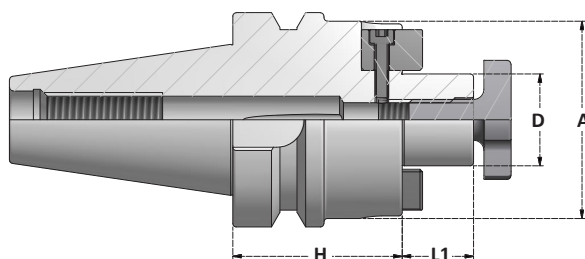
25000r.p.m.



CANALI
PER REFRIGERANTE
COOLANT CHANNELS



ACCESSORI INCLUSI
INCLUDED ACCESSORIES



SCHEDA TECNICA
TECHNICAL DATA
D S | P. 349

ATTACCO A DOPPIO CONTATTO DOUBLE CONTACT SHANK



Articolo	H
DBT30.H45.D16S *	45
DBT30.H45.D22S *	45
DBT30.H45.D27S *	45
DBT30.H45.D32S *	45

* Senza canali per il refrigerante
Without coolant channels

ATTACCO A DOPPIO CONTATTO DOUBLE CONTACT SHANK



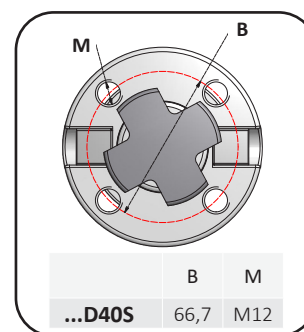
Articolo	H
DBT40.H45.D16S	45
DBT40.H100.D16S	100
DBT40.H160.D16S	160
DBT40.H45.D22S	45
DBT40.H100.D22S	100
DBT40.H160.D22S	160
DBT40.H45.D27S	45
DBT40.H100.D27S	100
DBT40.H160.D27S	160
DBT40.H50.D32S	50
DBT40.H60.D40S	60

ATTACCO A DOPPIO CONTATTO DOUBLE CONTACT SHANK



Articolo	H
DBT50.H50.D16S	50
DBT50.H100.D16S	100
DBT50.H160.D16S	160
DBT50.H200.D16S	200
DBT50.H55.D22S	55
DBT50.H100.D22S	100
DBT50.H160.D22S	160
DBT50.H200.D22S	200
DBT50.H250.D22S	250
DBT50.H55.D27S	55
DBT50.H100.D27S	100
DBT50.H160.D27S	160
DBT50.H200.D27S	200
DBT50.H250.D27S	250
DBT50.H55.D32S	55
DBT50.H100.D32S	100
DBT50.H160.D32S	160
DBT50.H55.D40S	55

	D	A	L1	TTR	VTC
...D16S	16	38	17	TTR.D16	VTC.D16
...D22S	22	48	19	TTR.D22	VTC.D22
...D27S	27	58	21	TTR.D27	VTC.D27
...D32S	32	78	24	TTR.D32	VTC.D32
...D40S	40	88	27	TTR.D40	VTC.D40



	B	M
...D40S	66,7	M12

ACCESSORI - ACCESSORIES



P. 304
ACCESSORI
ACCESSORIES

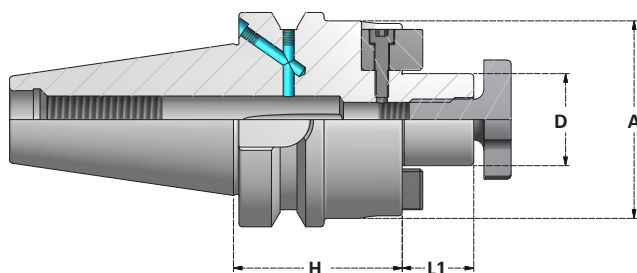
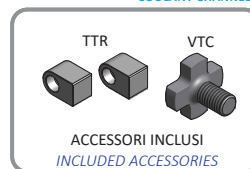


P. 310
SUPPORTI DI MONTAGGIO
ASSEMBLY DEVICES



P. 234
TIRANTI
PULL STUDS



**MANDRINI PORTAFRESA FISSI**
SHELL MILL HOLDERSSCHEDA TECNICA
TECHNICAL DATA
D S | P. 349

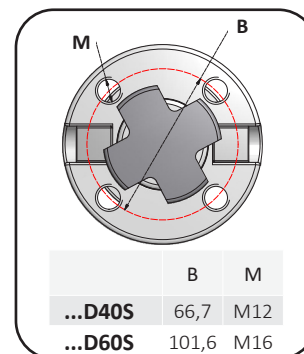
Articolo	H
BT30.H43.D16S	* 43
BT30.H43.D22S	* 43
BT30.H50.D27S	* 50
BT30.H50.D32S	* 50

* Senza canali per il refrigerante
Without coolant channels

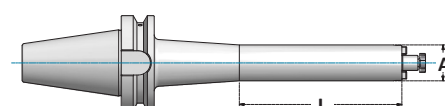
Articolo	H
BTB40.H45.D16S	45
BTB40.H100.D16S	100
BTB40.H130.D16S	130
BTB40.H160.D16S	160
BTB40.H200.D16S	200
BTB40.H45.D22S	45
BTB40.H100.D22S	100
BTB40.H130.D22S	130
BTB40.H160.D22S	160
BTB40.H200.D22S	200
BTB40.H45.D27S	45
BTB40.H100.D27S	100
BTB40.H130.D27S	130
BTB40.H160.D27S	160
BTB40.H200.D27S	200
BTB40.H56.D32S	56
BTB40.H100.D32S	100
BTB40.H130.D32S	130
BTB40.H160.D32S	160
BTB40.H200.D32S	200
BTB40.H60.D40S	60
BTB40.H100.D40S	100
BTB40.H130.D40S	130
BTB40.H160.D40S	160
BTB40.H200.D40S	200

Articolo	H	L
BTB50.H50.D16S	50	-
BTB50.H75.D16S	75	-
BTB50.H100.D16S	100	-
BTB50.H130.D16S	130	-
BTB50.H160.D16S	160	-
BTB50.H200.D16S	200	-
BTB50.H250.D16S	250	-
BTB50.H300.D16S	300	200
BTB50.H350.D16S	350	230
BTB50.H55.D22S	55	-
BTB50.H75.D22S	75	-
BTB50.H100.D22S	100	-
BTB50.H130.D22S	130	-
BTB50.H160.D22S	160	-
BTB50.H200.D22S	200	-
BTB50.H250.D22S	250	-
BTB50.H300.D22S	300	-
BTB50.H350.D22S	350	300
BTB50.H55.D27S	55	-
BTB50.H75.D27S	75	-
BTB50.H100.D27S	100	-
BTB50.H130.D27S	130	-
BTB50.H160.D27S	160	-
BTB50.H200.D27S	200	-
BTB50.H250.D27S	250	-
BTB50.H300.D27S	300	-
BTB50.H350.D27S	350	-
BTB50.H55.D32S	55	-
BTB50.H75.D32S	75	-
BTB50.H100.D32S	100	-
BTB50.H130.D32S	130	-
BTB50.H160.D32S	160	-
BTB50.H200.D32S	200	-
BTB50.H250.D32S	250	-
BTB50.H300.D32S	300	-
BTB50.H350.D32S	350	-
BTB50.H55.D40S	55	-
BTB50.H75.D40S	75	-
BTB50.H100.D40S	100	-
BTB50.H130.D40S	130	-
BTB50.H160.D40S	160	-
BTB50.H200.D40S	200	-
BTB50.H80.D60S	80	-

	D	A	L1	TTR	VTC
...D16S	16	38	17	TTR.D16	VTC.D16
...D22S	22	48	19	TTR.D22	VTC.D22
...D27S	27	58	21	TTR.D27	VTC.D27
...D32S	32	78	24	TTR.D32	VTC.D32
...D40S	40	88	27	TTR.D40	VTC.D40
...D60S	60	29	40	TTR.D60	VTC.D60



	B	M
...D40S	66,7	M12
...D60S	101,6	M16



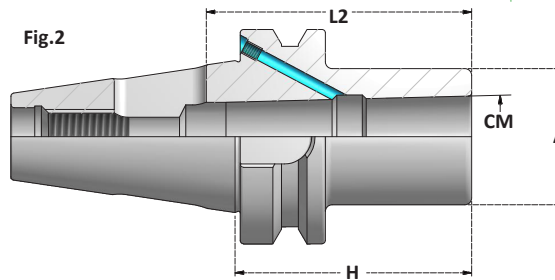
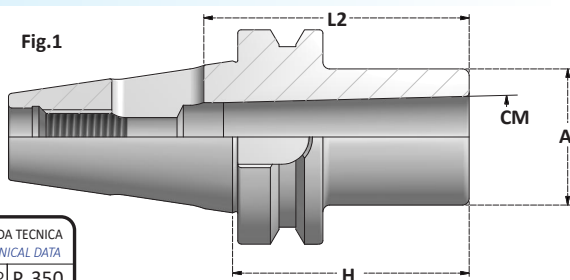
ACCESSORI - ACCESSORIES





MANDRINI DI RIDUZIONE CONO MORSE PER PUNTE
MORSE TAPER ADAPTERS FOR DRILLS

G6,3
15000 r.p.m.



SCHEDA TECNICA
TECHNICAL DATA
CM P | P. 350



Articolo	H	Fig
BT30.H50.CM1P	50	1
BT30.H60.CM2P	60	1
BT30.H79.CM3P	79	1



Articolo	H	Fig
BT40.H50.CM1P	50	1
BT40.H120.CM1P	120	3
BT40.H50.CM2P	50	1
BT40.H120.CM2P	120	3
BT40.H70.CM3P	70	1
BT40.H135.CM3P	135	3
BT40.H95.CM4P	95	1



Articolo	H	Fig
BT50.H45.CM1P	45	1
BT50.H120.CM1P	120	3
BT50.H60.CM2P	60	1
BT50.H135.CM2P	135	3
BT50.H65.CM3P	65	1
BT50.H155.CM3P	155	3
BT50.H95.CM4P	95	1
BT50.H180.CM4P	180	3
BT50.H105.CM5P	105	1
BT50.H215.CM5P	215	3



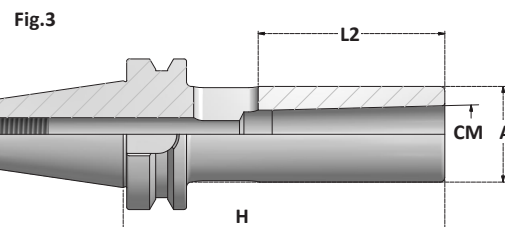
Articolo	H	Fig
BTB40.H50.CM2P	50	2
BTB40.H70.CM3P	70	2
BTB40.H95.CM4P	95	2



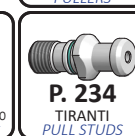
Articolo	H	Fig
BTB50.H60.CM2P	60	2
BTB50.H65.CM3P	65	2
BTB50.H95.CM4P	95	2
BTB50.H105.CM5P	105	2

	CM	A	L2
...CM1P	1	25	56
...CM2P	2	32	67
...CM3P	3	40	84
...CM4P	4	48	107
...CM5P	5	63	135

**PER UTENSILI DIN228B
CON TENONE**
*FOR TOOLS DIN228B
WITH TANG*



ACCESSORI - ACCESSORIES



**MANDRINI DI RIDUZIONE CONO MORSE PER FRESE**
*MORSE TAPER ADAPTERS FOR THREADED MILLS***G6,3**
15000 r.p.m.

Fig. 1

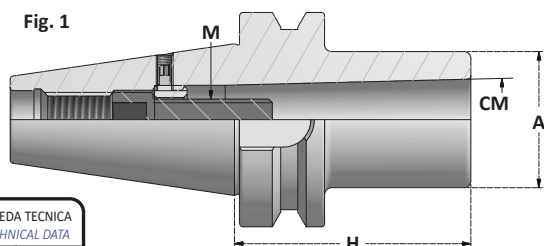
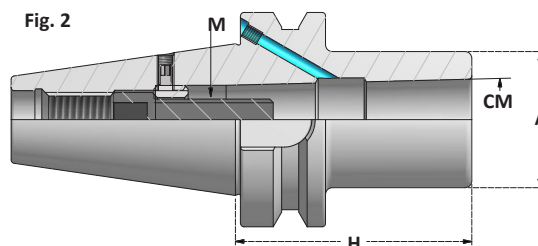


Fig. 2

SCHEDA TECNICA
TECHNICAL DATA
CMFV | P. 351

Articolo	H	Fig
BT30.H50.CM1FV	50	1
BT30.H60.CM2FV *	60	1
BT30.H80.CM3FV *	80	1



Articolo	H	Fig
BT40.H50.CM1FV	50	1
BT40.H50.CM2FV	50	1
BT40.H70.CM3FV	70	1
BT40.H95.CM4FV	95	1



Articolo	H	Fig
BT50.H45.CM1FV	45	1
BT50.H60.CM2FV	60	1
BT50.H65.CM3FV	65	1
BT50.H120.CM3FV	120	1
BT50.H90.CM4FV	90	1
BT50.H120.CM5FV	120	1

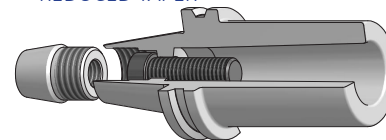
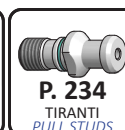
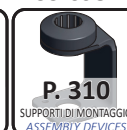


Articolo	H	Fig
BTB40.H50.CM2FV	50	2
BTB40.H70.CM3FV	70	2
BTB40.H95.CM4FV	95	2



Articolo	H	Fig
BTB50.H60.CM2FV	60	2
BTB50.H65.CM3FV	65	2
BTB50.H95.CM4FV	95	2
BTB50.H120.CM5FV	120	2

	CM	A	M
...CM1FV	1	25	M6
...CM2FV	2	32	M10
...CM3FV	3	40	M12
...CM4FV	4	48	M16
...CM5FV	5	63	M20

**PER UTENSILI DIN228A
CON FILETTO***FOR TOOLS DIN228A
WITH THREAD***FORNITI CON VITE SENZA FORO
PER IL PASSAGGIO DEL
REFRIGERANTE***SUPPLIED WITH SCREW WITHOUT
COOLANT THROUGH**** CONO RIDOTTO**
REDUCED TAPER**ACCESSORI - ACCESSORIES**



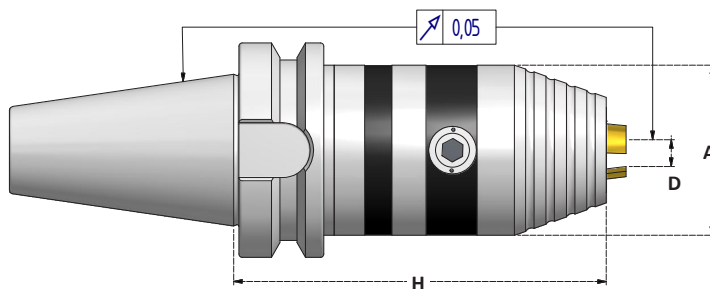
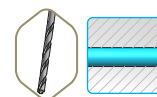
MAS 403 (JIS B 6339)

BT

CP

MANDRINI PORTAPUNTA CON PASSAGGIO DEL REFRIGERANTE
ROTAZIONE DESTRA E SINISTRA

DRILL CHUCKS **WITH COOLANT THROUGH** - RIGHT AND LEFT ROTATION



Articolo	H
BT40.H89.CP8S	89
BT40.H115.CP13S	115
BT40.H120.CP16S	120

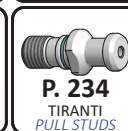
	D	A	Chiave Wrench
...CP8	0,5 - 8	37,5	CH.EX4
...CP13	1- 13	50,5	CH.EX6
...CP16	2,5- 16	57	CH.EX6

Articolo	H
BT50.H120.CP13S	120
BT50.H125.CP16S	125

GRIFFE RIVESTITE IN TITANIO

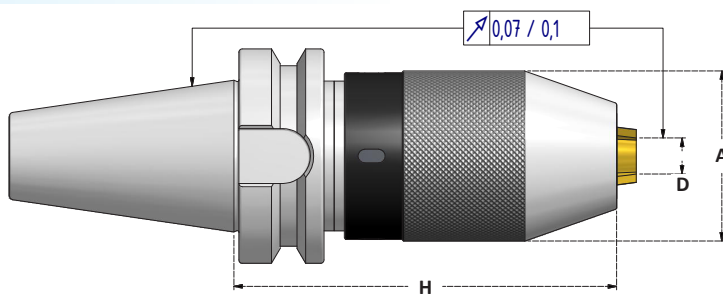
TITANIUM COATED JAWS

ACCESSORI - ACCESSORIES





MANDRINI PORTAPUNTA AUTOSERRANTI - ROTAZIONE DESTRA DRILL CHUCKS - RIGHT ROTATION



**GRIFFE RIVESTITE
IN TITANIO**

**TITANIUM
COATED JAWS**

	D	A	Chiave Wrench
...DCK8	0,5 - 8	37,5	CH.DC8
...DCK13	1 - 13	50,5	CH.DC13
...DCK16	2,5 - 16	57	CH.DC16

Articolo	H
BT30.H75.DCK8S	75
BT30.H90.DCK13S	90

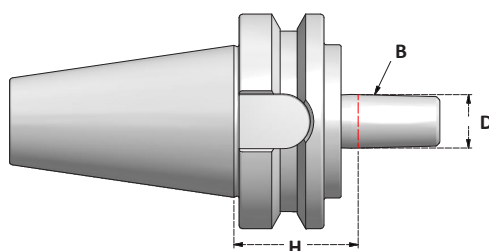
Articolo	H
BT40.H84.DCK8S	84
BT40.H98.DCK13S	98
BT40.H105.DCK16S	105

Articolo	H
BT50.H105.DCK13S	105
BT50.H110.DCK16S	110

ACCESSORI - ACCESSORIES



ATTACCHI PER MANDRINI AUTOSERRANTI DRILL CHUCKS ARBORS



Articolo	H
BT30.H30.B12	30
BT30.H30.B16	30

Articolo	H
BT40.H42.B12	42
BT40.H42.B16	42
BT40.H42.B18	42

B	D
...B12	12,065
...B16	15,733
...B18	17,78

Articolo	H
BT50.H45.B16	45
BT50.H45.B18	45

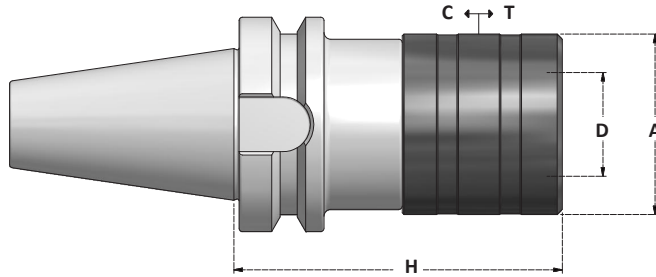
ACCESSORI - ACCESSORIES





MASCHIATORI A CAMBIO RAPIDO CON COMPENSAZIONE ASSIALE

QUICK CHANGE TAPPING CHUCKS WITH AXIAL COMPENSATION



SCHEDA TECNICA
TECHNICAL DATA
MCR | P. 352

Corsa di compressione: **C**
Compression stroke:

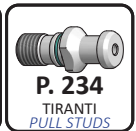
Corsa di trazione: **T**
Extension stroke:

Articolo	H
BT40.MCR1TC	67,5
BT40.MCR2TC	94,5
BT40.MCR3TC	164,5

	Bussola Adapter	D	Tapping Range	A	T	C
MCR1TC	B1 / BF1	19	M2÷M14	36	7,5	7,5
MCR2TC	B2 / BF2	31	M6÷M27	53	12,5	12,5
MCR3TC	B3 / BF3	48	M14÷M45	78	20	20
MCR4TC	BF4	60	M22÷M45	96	22,5	22,5

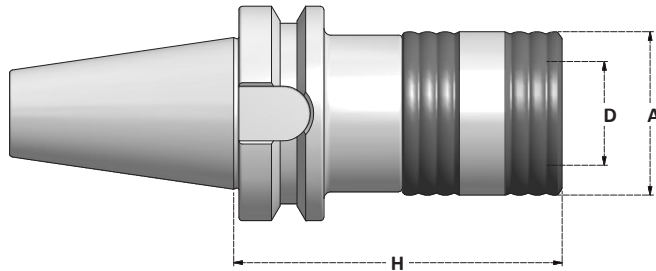
Articolo	H
BT50.MCR1TC	77
BT50.MCR2TC	102,5
BT50.MCR3TC	142,5
BT50.MCR4TC	164,5

ACCESSORI - ACCESSORIES



MASCHIATORI A CAMBIO RAPIDO PER MASCHIATURA RIGIDA

QUICK CHANGE TAPPING CHUCKS FOR RIGID TAPPING



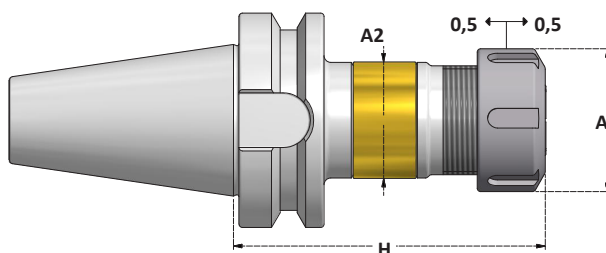
SCHEDA TECNICA
TECHNICAL DATA
MCR | P. 352

Articolo	A	H
BT40.MCR1R	32	65
BT40.MCR2R	54	93

	Bussola Adapter	D	Tapping Range
MCR1	B1 / BF1	19	M2÷M14
MCR2	B2 / BF2	31	M6÷M27

ACCESSORI - ACCESSORIES



**MANDRINI PER MASCHIATURA SINCRONIZZATA**
TAPPING CHUCKS FOR SYNCHRONIZED TAPPING

SCHEDA TECNICA
TECHNICAL DATA
SY P. 353



Articolo	H
BTB40.ERC16MSY	79



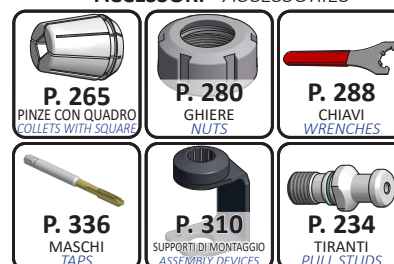
Articolo	H
BTB40.ERC16SY	79
BTB40.ERC25SY	89
BTB40.ERC32SY	110
BTB40.ERC40SY	115

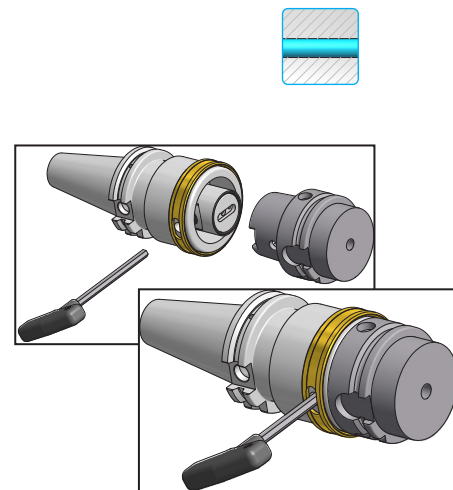
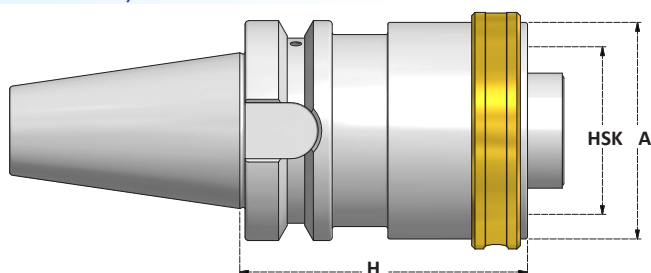
	A	A2	Collets Range	Tapping Range	Ghiera Nut
...ERC16MSY	22	34	3,5 ÷ 10	M3 ÷ M12	G16M
...ERC16SY	32	34	3,5 ÷ 10	M3 ÷ M12	G16S
...ERC20SY	35	34	3,5 ÷ 12	M3 ÷ M16	G20S
...ERC25SY	42	45	3,5 ÷ 16	M3 ÷ M20	G25S
...ERC32SY	50	45	3,5 ÷ 20	M3 ÷ M27	G32S
...ERC40SY	63	62	6 ÷ 25	M5 ÷ M33	G40S

VANTAGGI RISPETTO AL SISTEMA CON BUSSOLE
ADVANTAGES COMPARED TO ADAPTERS SYSTEM

- PASSAGGIO DEL REFRIGERANTE
 - ADATTO PER MASCHIATURA AD ALTE VELOCITÀ
 - SISTEMA PORTAPINZE ER
- COOLANT THROUGH
- SUITABLE FOR HIGH SPEED TAPPING
- ER COLLET SYSTEM

ACCESSORI - ACCESSORIES

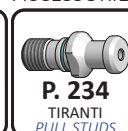
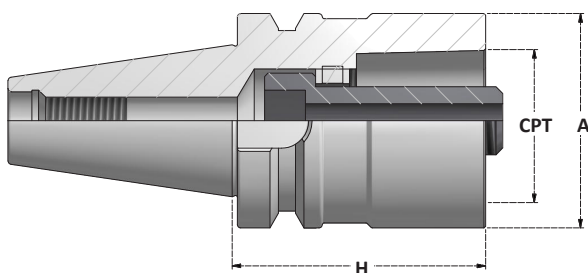


**ADATTATORI HSK FORMA A/C**
ADAPTERS HSK FORM A/C

Articolo	H	A	HSK A/C
BTB40.H70.HSK50AC	70	55	50
BTB40.H75.HSK63AC	75	70	63



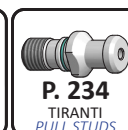
Articolo	H	A	HSK A/C
BTB50.H65.HSK50AC	65	55	50
BTB50.H75.HSK63AC	75	70	63
BTB50.H100.HSK100AC	100	110	100

ACCESSORI - ACCESSORIES**NEW****ADATTATORI CPT**
ADAPTERS CPT

Articolo	H	A	CPT
BTB40.H30.CPT40	30	40	CPT40
BTB40.H50.CPT50	50	50	CPT50
BTB40.H75.CPT63	75	63	CPT63



Articolo	H	A	CPT
BTB50.H40.CPT40	40	40	CPT40
BTB50.H40.CPT50	40	50	CPT50
BTB50.H50.CPT63	50	63	CPT63
BTB50.H70.CPT80	70	80	CPT80
BTB50.H140.CPT100	140	100	CPT100

ACCESSORI - ACCESSORIES



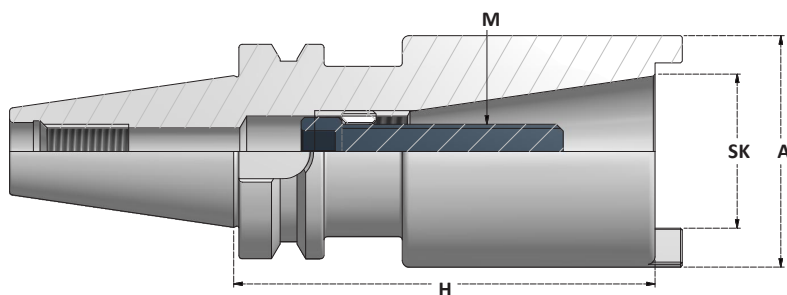
MAS 403 (JIS B 6339)

BT

SK

MANDRINI DI RIDUZIONE TC-BT-ISO

TC-BT-ISO REDUCTION SLEEVES



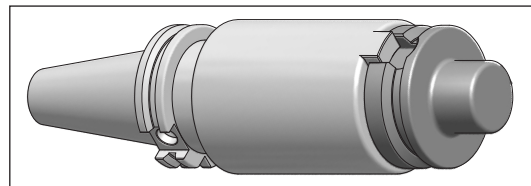
TC	DIN ISO 7388 (DIN69871)
BT	MAS 403 (JIS B 6339)
ISO	DIN 2080

Articolo	H	A	M	SK
BT40.H60.TB30	60	50	M12	TC30 / BT30
BT40.H95.TB40	95	70	M16	TC40 / BT40

Articolo	H	A	M	SK
BT40.H60.ISO30	60	50	M12	ISO30
BT40.H95.ISO40	95	70	M16	ISO40

Articolo	H	A	M	SK
BT50.H70.TB40	70	70	M16	TC40 / BT40
BT50.H130.TB50	130	90	M24	TC50 / BT50

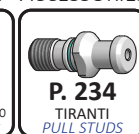
Articolo	H	A	M	SK
BT50.H70.ISO40	70	70	M16	ISO40
BT50.H130.ISO50	130	90	M24	ISO50



FORNITI CON VITE SENZA FORO PER IL PASSAGGIO DEL REFRIGERANTE

SUPPLIED WITH SCREW WITHOUT COOLANT THROUGH

ACCESSORI - ACCESSORIES

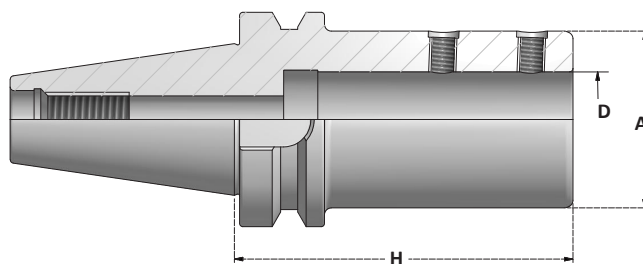
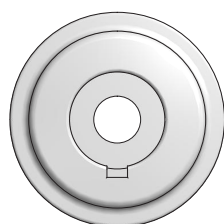


BT

TR

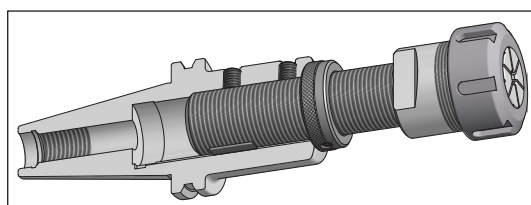
MANDRINI PORTA INSERZIONI REGISTRABILI DIN 6327

HOLDERS FOR ADJUSTABLE ADAPTERS DIN 6327

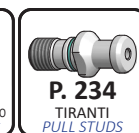
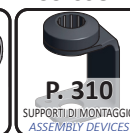
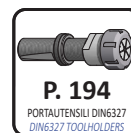


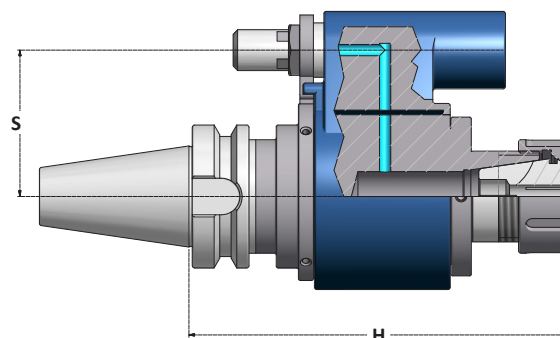
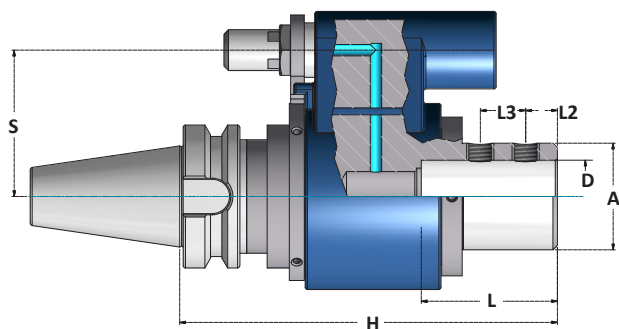
Articolo	D	H	A
BT40.H100.TR28	28	100	40
BT40.H115.TR36	36	115	50

Articolo	D	H	A
BT50.H85.TR16	16	85	25
BT50.H85.TR20	20	85	32
BT50.H100.TR28	28	100	40
BT50.H100.TR36	36	100	50
BT50.H105.TR48	48	105	67



ACCESSORI - ACCESSORIES



**DISTRIBUTORI ROTANTI DEL REFRIGERANTE**
OIL HOLE HOLDERS

Pressione d'esercizio: MAX 7 bar
 Numero di giri: MAX 3000 r.p.m.

*Operating pressure: MAX 7 bar
 Number of revolutions: MAX 3000 r.p.m.*

Per preservare dall'usura precoce le speciali guarnizioni di tenuta, il liquido refrigerante deve essere filtrato con residuo max 5µm.

To preserve the special seals from premature wear, coolant must be filtered with a maximum residue of 5µm.

Per il collegamento necessita dello "stop block" acquistabile tra gli accessori.

For the connection it needs the "stop block" that can be purchased among the accessories.

DISTRIBUTORI ROTANTI DEL REFRIGERANTE PER ATTACCHI CILINDRICI
SIDE LOCK OIL HOLE HOLDERS

Articolo	D	H	A	L	S	L2	L3
BT40.D16DR	16	165	46,5	58	65	25	/
BT40.D20DR	20	165	46,5	60	65	25	/
BT40.D25DR	25	165	46,5	66	65	15	20
BT40.D32DR	32	165	47	70	65	15	20

Articolo	D	H	A	L	S	L2	L3
BT50.D32DR	32	165	56	70	80	15	20
BT50.D40DR	40	170	56	70	80	15	25

DISTRIBUTORI ROTANTI DEL REFRIGERANTE PORTAPINZA ER
ER OIL HOLE HOLDERS COLLET CHUCKS

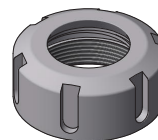
Articolo	H	S
BT40.ERC16DR	160	65
BT40.ERC20DR	160	65
BT40.ERC25DR	160	65
BT40.ERC32DR	160	65

Articolo	H	S
BT50.ERC32DR	160	80
BT50.ERC40DR	160	80

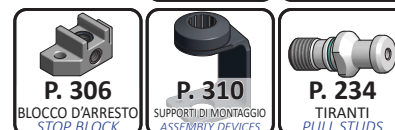
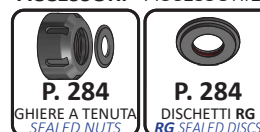
	Collets Range	Ghiera Nut
...ERC16DR	1÷10	G16HTE
...ERC20DR	1÷14	G20HTE



	Collets Range	Ghiera Nut
...ERC25DR	1÷20	G25HT
...ERC32DR	2÷22	G32HT
...ERC40DR	3÷30	G40HT



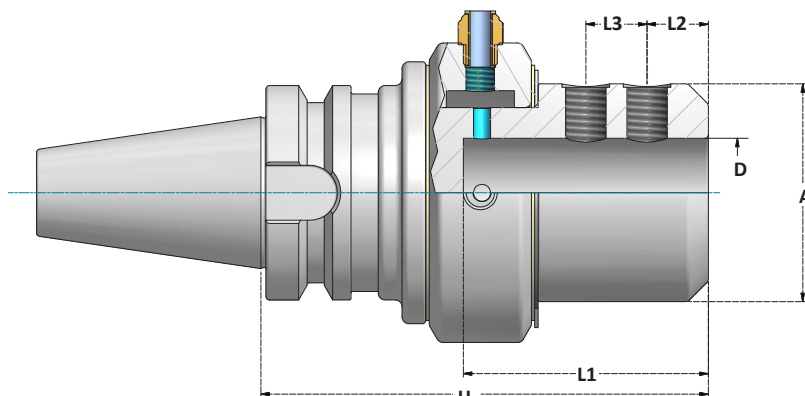
La fornitura comprende un disco di tenuta RG.D10.
Supplied with RG.D10 sealing disc.

ACCESSORI - ACCESSORIES

**MAS 403** (JIS B 6339)

BT

DRM

**DISTRIBUTORI ROTANTI DEL REFRIGERANTE A CAMBIO MANUALE
PER ATTACCHI CILINDRICI***MANUAL SIDE LOCK OIL HOLE HOLDERS*

Articolo	D	H	A	L1	L2	L3	GRANI SCREWS
BT40.DRM32	32	125	64,5	72	20	20	M14

Articolo	D	H	A	L1	L2	L3	GRANI SCREWS
BT50.DRM40	40	145	64,5	82	20	25	M16

Pressione d'esercizio: MAX 20 bar
Numero di giri: MAX 1000 r.p.m.

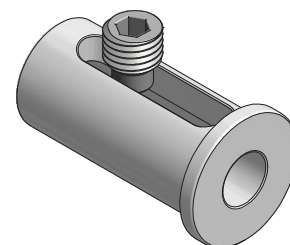
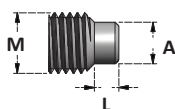
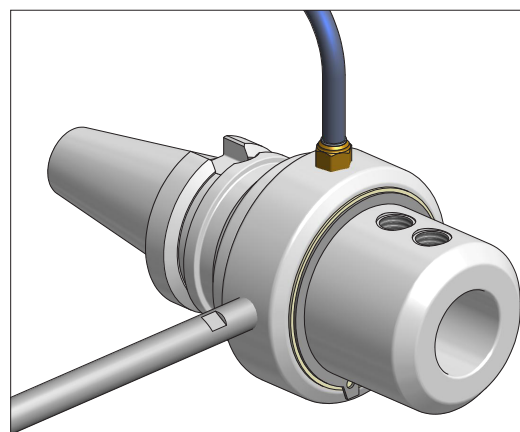
Per preservare dall'usura precoce le speciali guarnizioni di tenuta, il liquido refrigerante deve essere filtrato con residuo max 5µm.

Fornito con la barra filettata da agganciare ad un fermo nella macchina utensile.

*Operating pressure: MAX 20 bar
Number of revolutions: MAX 1000 r.p.m.*

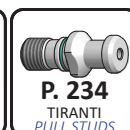
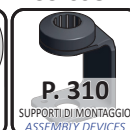
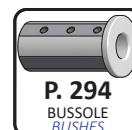
To preserve the special seals from premature wear, coolant must be filtered with a maximum residue of 5µm.

Supplied with the threaded rod to be hooked to a stop in the machine tool.

**GRANI PER UTILIZZO BUSSOLE E2-1 CON ASOLA**
SCREWS FOR USING E2-1 BUSHES WITH SLOT

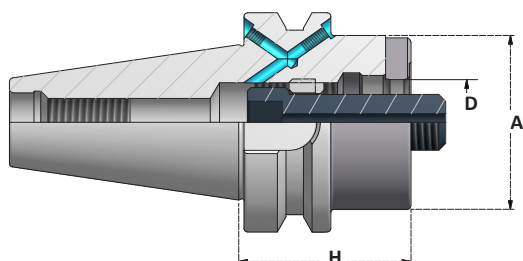
Articolo	M	A	L
GR.DRM32-25-20	M14x2	12	8

Articolo	M	A	L
GR.DRM40-32	M16x1,5	12	7

ACCESSORI - ACCESSORIES



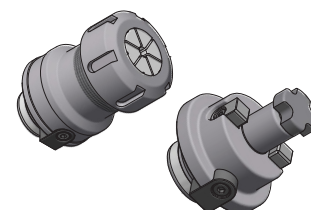
MANDRINI MODULARI TIPO VARILOCK
MODULAR TOOLHOLDERS VARILOCK TYPE



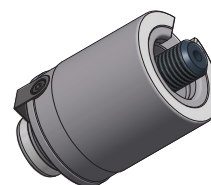
Articolo	A	H	D	Attacco
BTB40.H27.MD50	50	27	27,3 / 27	MD50
BTB40.H50.MD50	50	50	27,3 / 27	MD50
BTB40.H27.MD63	63	27	32,3 / 32	MD63
BTB40.H50.MD63	63	50	32,3 / 32	MD63



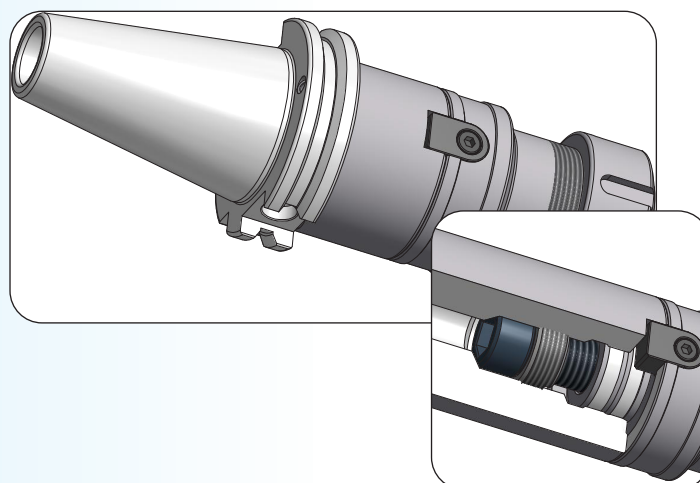
Articolo	A	H	D	Attacco
BTB50.H38.MD50	50	38	27,3 / 27	MD50
BTB50.H50.MD50	50	50	27,3 / 27	MD50
BTB50.H50.MD63	63	50	32,3 / 32	MD63
BTB50.H50.MD80	80	50	32,3 / 32	MD80



INSERZIONI PORTAUTENSILI
TOOLHOLDER ADAPTERS
PAG. 202



RIDUZIONI E PROLUNGHE
EXTENSIONS AND REDUCTIONS
PAG. 203

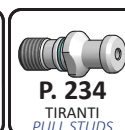


ACCESSORI - ACCESSORIES



P. 310

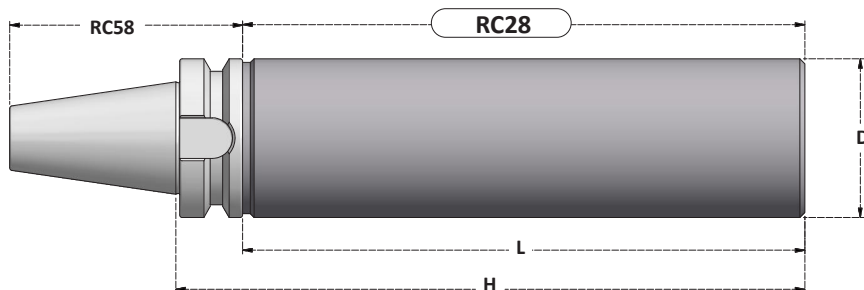
SUPPORTI DI MONTAGGIO
ASSEMBLY DEVICES



P. 234

TIRANTI
PULL STUDS



**MANDRINI CON STELO LAVORABILE***BLANK ARBORS*

Articolo	D	H	L
BT40.H250.D40BL	40	250	223
BT40.H160.D63BL	63	160	133
BT40.H250.D63BL	63	250	223
BT40.H270.D80BL	80	270	243



Articolo	D	H	L
BT50.H330.D50BL	50	330	292
BT50.H330.D80BL	80	330	292
BT50.H315.D97BL	97	315	277

**ATTACCO A DOPPIO CONTATTO***DOUBLE CONTACT SHANK*

Articolo	D	H	L
DBT40.H250.D63BL	63	250	223
DBT40.H315.D80BL	80	315	288

ATTACCO A DOPPIO CONTATTO*DOUBLE CONTACT SHANK*

Articolo	D	H	L
DBT50.H315.D97BL	97	315	277

