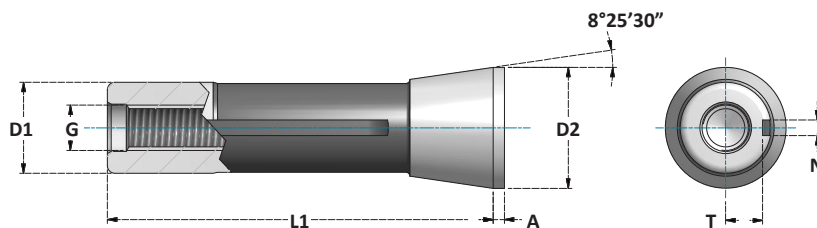
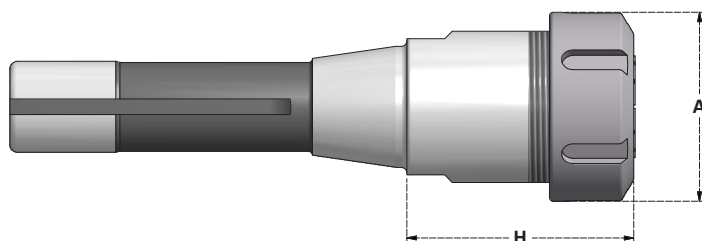
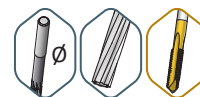


**MANDRINI R8**
R8 TOOLHOLDERS**DIMENSIONI**
DIMENSIONS

D1	D2	L1	G	A	N	T
		MAX	MAX			
24,12	32	101,6	7/16- 20 NF-2B	3,17	4	2,5

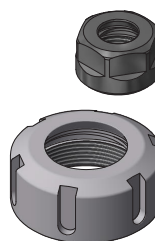
R8

ERC

DIN ISO 15488 (DIN6499)**MANDRINI PORTAPINZA ER**
ER COLLET CHUCKS

SCHEDA TECNICA
TECHNICAL DATA
ERC | P. 338

Articolo	H
R8.H44.ERC16	44
R8.H50.ERC25	50
R8.H63.ERC32	63
R8.H72.ERC40	72

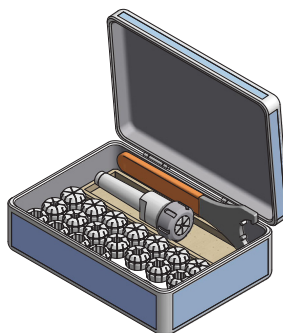


	A	Collets Range	Ghiera Nut
...ERC16	28	1÷10	G16SE
...ERC25	42	1÷20	G25S
...ERC32	50	2÷22	G32S
...ERC40	63	3÷30	G40S

KIT - MANDRINO, CHIAVE E PINZE

KIT - TOOLHOLDER, WRENCH AND COLLETS

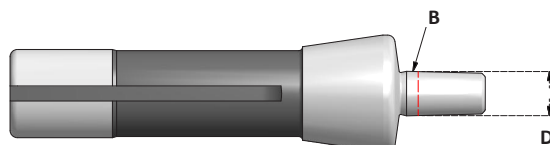
Articolo	Pinze Collets	Mandrino Chuck	Chiave Wrench
BX.R8.ERC16	ERC16.D1÷D10 x 1,0mm	R8.H44.ERC16	CH.E25
BX.R8.ERC25	ERC25.D2÷D16 x 1,0mm	R8.H50.ERC25	CH25S
BX.R8.ERC32	ERC32.D3÷D20 x 1,0mm	R8.H63.ERC32	CH32S
BX.R8.ERC40	ERC40.D4÷D26 x 1,0mm	R8.H72.ERC40	CH40S

**ACCESSORI - ACCESSORIES****P. 250**
PINZE
COLLETS**P. 280**
GHIERE
NUTS**P. 288**
CHIAVI
WRENCHES

**R8**

R8

B

DIN 238**ATTACCHI PER MANDRINI AUTOSERRANTI***DRILL CHUCKS ARBORS*

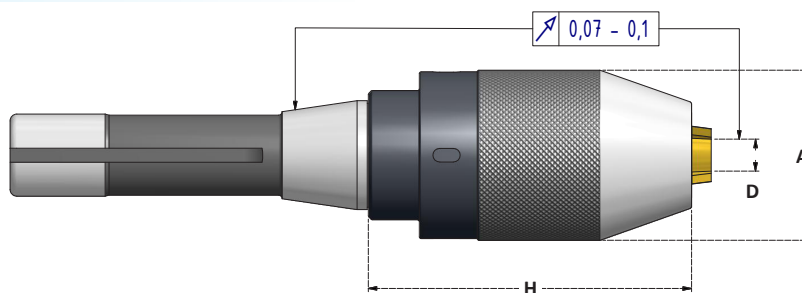
Articolo	B	D
R8.B10	B10	10,094
R8.B12	B12	12,065
R8.B16	B16	15,733

ACCESSORI - ACCESSORIES

**P. 204**
AUTOSERRANTI
DRILL CHUCKS**R8**

R8

DCK

MANDRINI PORTAPUNTA AUTOSERRANTI - ROTAZIONE DESTRA*DRILL CHUCKS - RIGHT ROTATION***GRIFFE RIVESTITE
IN TITANIO****TITANIUM
COATED JAWS**

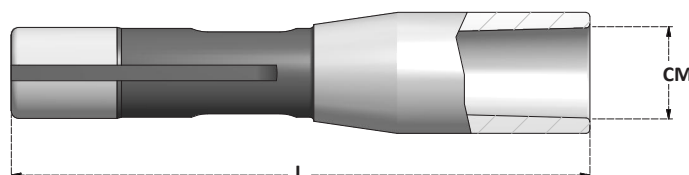
Articolo	Range D	H	A	Chiave Wrench
R8.H83.DCK13S	1÷13	83	50,5	CH.DC13
R8.H83.DCK16S	2,5÷16	83	57	CH.DC16

ACCESSORI - ACCESSORIES

**P. 289**
CHIAVI
WRENCHES**R8**

R8

CM

DIN 6383**MANDRINI DI RIDUZIONE CONO MORSE PER PUNTE***MORSE TAPER ADAPTERS FOR DRILLS*

Articolo	CM	L
R8.L114.CM1	CM1	114
R8.L127.CM2	CM2	127
R8.L153.CM3	CM3	153
R8.L240.CM4	CM4	240

**PER UTENSILI DIN228B
CON TENONE***FOR TOOLS DIN228B
WITH TANG*