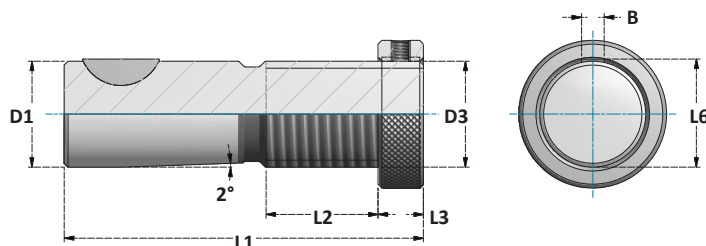
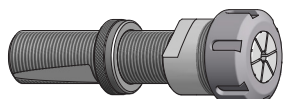


**INSERZIONI REGISTRABILI "TR"**
"TR" ADJUSTABLE ADAPTERS**DIMENSIONI**
DIMENSIONS

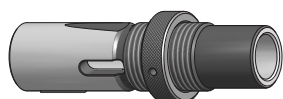
ATTACCO	D1	D3	L1	L2	L3	L6	B
	g5						
TR16	16	TR16 x 1,5	85	28	12	17,1	5
TR20	20	TR20 x 1,5	88	28	12	21,1	5
TR28	28	TR28 x 2	95	30	12	29,5	6
TR36	36	TR36 x 2	118	36	14	37,5	8
TR48	48	TR48 x 2	144	47	18	49,9	10

**MANDRINI PORTAPINZA ER**
ER COLLET CHUCKS

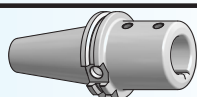
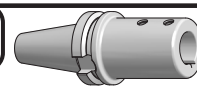
PAG. 195

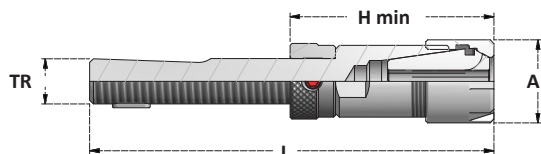
**RIDUZIONI A CONO MORSE - CORTE**
MORSE TAPER ADAPTERS - SHORT

PAG. 196

**RIDUZIONI A CONO MORSE - LUNGHE**
MORSE TAPER ADAPTERS - LONG

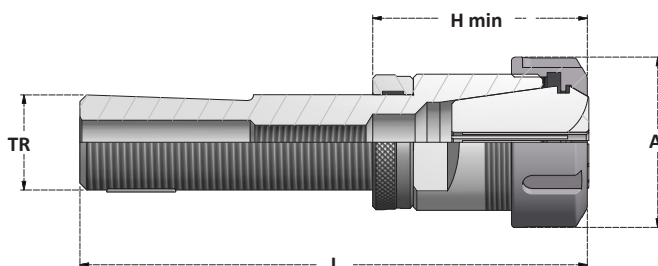
PAG. 196

TC**P. 105**PORTA INSERZIONI REGISTRABILI
HOLDERS FOR ADJUSTABLE ADAPTERS**BT****P. 149**PORTA INSERZIONI REGISTRABILI
HOLDERS FOR ADJUSTABLE ADAPTERS

**MANDRINI PORTAPINZA ER**
ER COLLET CHUCKSSCHEDA TECNICA
TECHNICAL DATA
ERC P. 338

Articolo	TR	H min	L
TR16.H59.ERC16M	16	59	132
TR16.H63.ERC20M	16	63	136
TR20.H59.ERC16M	20	59	135
TR20.H63.ERC20M	20	63	139
TR20.H64.ERC25M	20	64	140

	A	Collets Range	Ghiera Nut
...ERC16M	22	1÷10	G16M
...ERC20M	28	1÷14	G20M
...ERC25M	35	1÷20	G25M

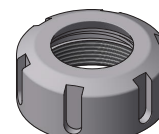
**SENZA PASSAGGIO DEL REFRIGERANTE**
*WITHOUT COOLANT BORE***MANDRINI PORTAPINZA ER**
ER COLLET CHUCKSSCHEDA TECNICA
TECHNICAL DATA
ERC P. 338

Articolo	TR	H min	L
TR16.H45.ERC11 *	16	45	118
TR16.H56.ERC16 *	16	56	129
TR20.H56.ERC16 *	20	56	132
TR20.H61.ERC20 *	20	61	137
TR28.H56.ERC16	28	56	139
TR28.H61.ERC20	28	61	144
TR28.H60.ERC25	28	60	143
TR28.H70.ERC32	28	70	151,5
TR28.H76.ERC40	28	76	159
TR36.H65.ERC32	36	65	169,5
TR36.H78.ERC40	36	78	182
TR48.H69.ERC32	48	69	196
TR48.H82.ERC40	48	82	209

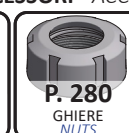
	A	Collets Range	Ghiera Nut
...ERC11	19	1÷7	G11SE
...ERC16	28	1÷10	G16SE
...ERC20	34	1÷14	G20SE



...ERC25	42	1÷20	G25S
...ERC32	50	2÷22	G32S
...ERC40	63	3÷30	G40S



ACCESSORI - ACCESSORIES



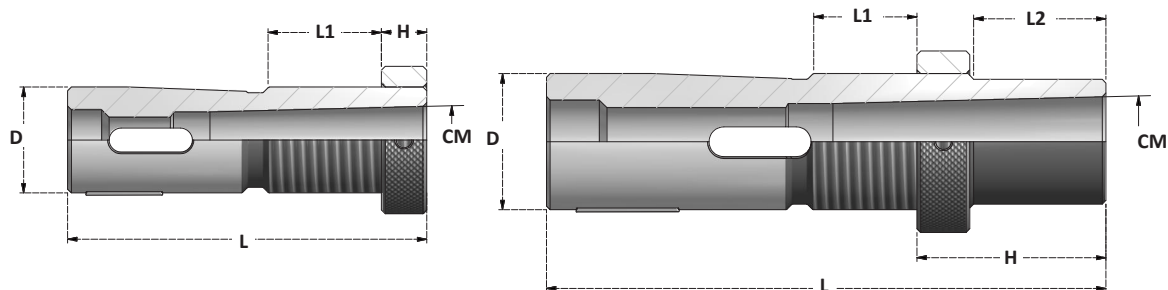
* = SENZA PASSAGGIO DEL REFRIGERANTE

* = WITHOUT COOLANT BORE





INSERZIONI REGISTRABILI CONO MORSE
ADJUSTABLE MORSE TAPER ADAPTERS



Articolo	D	CM	L	H	L1
E16.CM1	16	CM1	85	12	28
E20.CM1	20	CM1	88	12	28
E28.CM1	28	CM1	95	12	30
E28.CM2	28	CM2	95	12	30
E36.CM1	36	CM1	118	14	36
E36.CM2	36	CM2	118	14	36
E36.CM3	36	CM3	118	14	36
E48.CM1	48	CM1	144	18	47
E48.CM2	48	CM2	144	18	47
E48.CM3	48	CM3	144	18	47
E48.CM4	48	CM4	144	18	47

Articolo	D	CM	L	H	L1	L2
G16.CM1.25	16	CM1	110	37	28	25
G16.CM1.50	16	CM1	135	62	28	50
G16.CM1.75	16	CM1	160	87	28	75
G16.CM1.100	16	CM1	185	112	28	100
G20.CM1.25	20	CM1	113	37	28	25
G20.CM1.50	20	CM1	138	62	28	50
G20.CM1.75	20	CM1	163	87	28	75
G20.CM1.100	20	CM1	188	112	28	100
G28.CM1.25	28	CM1	120	37	30	25
G28.CM1.50	28	CM1	145	62	30	50
G28.CM1.75	28	CM1	170	87	30	75
G28.CM1.100	28	CM1	195	112	30	100
G28.CM2.25	28	CM2	120	37	30	25
G28.CM2.50	28	CM2	145	62	30	50
G28.CM2.75	28	CM2	170	87	30	75
G28.CM2.100	28	CM2	195	112	30	100
G36.CM2.30	36	CM2	148	44	36	30
G36.CM2.60	36	CM2	178	74	36	60
G36.CM2.90	36	CM2	208	104	36	90
G36.CM2.120	36	CM2	238	134	36	120
G36.CM3.30	36	CM3	148	44	36	30
G36.CM3.60	36	CM3	178	74	36	60
G36.CM3.90	36	CM3	208	104	36	90
G36.CM3.120	36	CM3	238	134	36	120
G48.CM3.40	48	CM3	184	58	47	40
G48.CM3.80	48	CM3	224	98	47	80
G48.CM3.120	48	CM3	264	138	47	120
G48.CM3.160	48	CM3	304	178	47	160
G48.CM4.40	48	CM4	184	58	47	40
G48.CM4.80	48	CM4	224	98	47	80
G48.CM4.120	48	CM4	264	138	47	120
G48.CM4.160	48	CM4	304	178	47	160

