

**SUPPORTI DI MONTAGGIO
CON DOPPIA SEDE**

*TOOL ASSEMBLY DEVICES
WITH TWO SEATS*

PAG. 311



**SUPPORTI DI MONTAGGIO
ORIENTABILI - TBK**

*TOOL ASSEMBLY DEVICES
INDEXABLE - TBK*

PAG. 312



**SUPPORTI DI MONTAGGIO
ORIENTABILI - TLD**

*TOOL ASSEMBLY DEVICES
INDEXABLE - TLD*

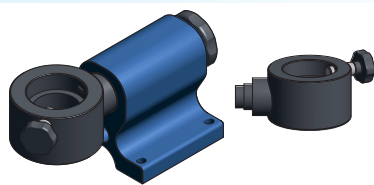
PAG. 313



**SUPPORTI DI MONTAGGIO
PER MORSE**

*TOOL ASSEMBLY DEVICES
FOR VISES*

PAG. 314



SUPPORTO DI MONTAGGIO ORIENTABILE E MODULARE

MODULAR AND ROTABLE ASSEMBLY DEVICE

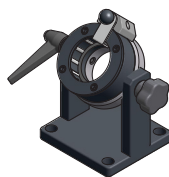
PAG. 315



SUPPORTI DI MONTAGGIO A RULLI

*ROLLER CLAMPING
ASSEMBLY DEVICE*

PAG. 316

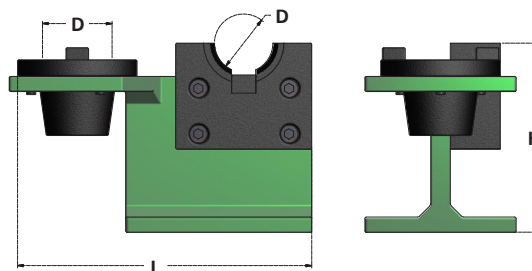
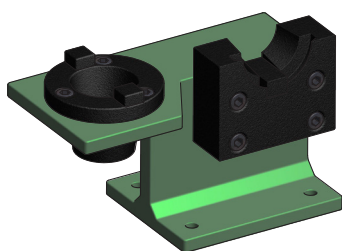


**SUPPORTI DI MONTAGGIO A RULLI
ORIENTABILI**

*ROLLER CLAMPING ASSEMBLY DEVICE
INDEXABLE*

PAG. 317



**SUPPORTI DI MONTAGGIO CON DOPPIA SEDE**
TOOL ASSEMBLY DEVICES WITH TWO SEATS

Articolo	MANDRINI / TOOLHOLDERS	D	L	H
TB3.SK30	TC30	31,75	205	110
TB3.SK40	TC40	44,45	205	110
TB3.SK50	TC50	69,85	280	150

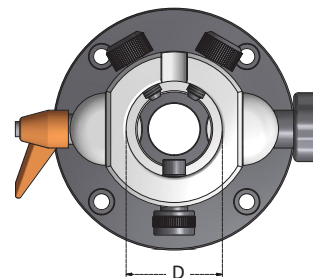
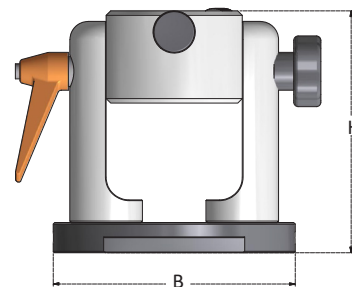
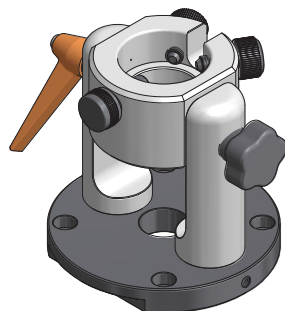
Articolo	MANDRINI / TOOLHOLDERS	D	L	H
TB3.BT30	BT30	31,75	205	110
TB3.BT40	BT40	44,45	205	110
TB3.BT50	BT50	69,85	280	150

I mandrini si possono montare in orizzontale e in verticale.
Toolholders can be mounted in vertical and horizontal position.

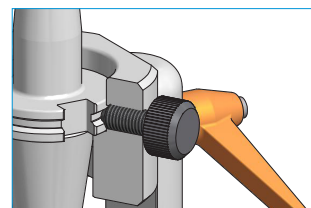
Sono da fissare al banco di lavoro con 4 viti (non fornite).
Must be fixed to a bench with 4 bolts (not included).

Non adatti per attacchi a doppio contatto.
Not suitable for double contact shank.



**SUPPORTI DI MONTAGGIO ORIENTABILI - BLOCCAGGIO SULLA FLANGIA**
INDEXABLE ASSEMBLY DEVICES - FLANGE CLAMPING

Articolo	MANDRINI / TOOLHOLDERS	D	B	H
TBK30	TC30 / CAT30 / BT30 HSK50A-B-D-T	50	150	160
TBK40	TC40 / CAT40 / BT40 HSK63A-B-D-T	63	150	160
TBK50	TC50 / CAT50 / BT50 HSK100A-B-D-T	100	180	200

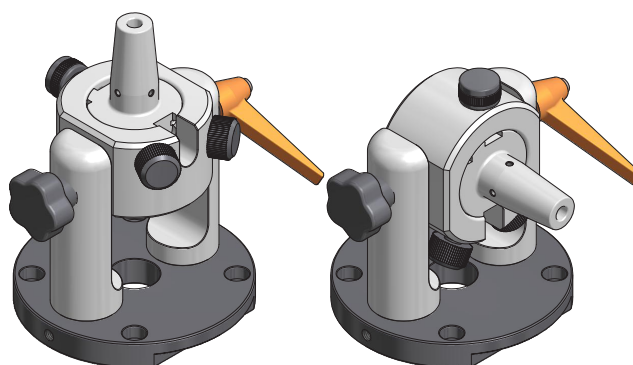


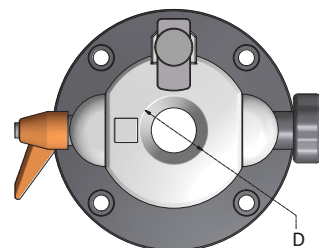
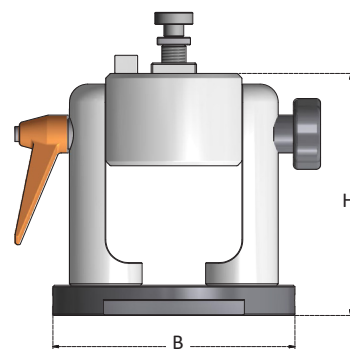
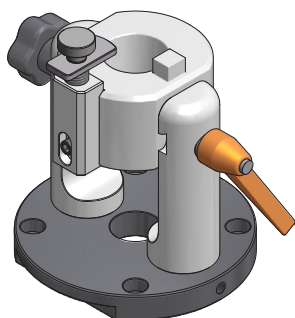
I mandrini sono orientabili in orizzontale e in verticale.
Toolholders are indexable in vertical and horizontal position.

Sono da fissare al banco di lavoro con 4 viti (non fornite).
Must be fixed to a bench with 4 bolts (not included).

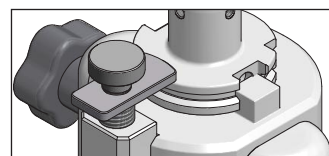
Nessun contatto con l'attacco conico del mandrino.
No contact with tool taper shank.

Non adatti per attacchi a doppio contatto.
Not suitable for double contact shank.



**SUPPORTI DI MONTAGGIO ORIENTABILI - CON SEDE CONICA**
INDEXABLE ASSEMBLY DEVICES - FOR TAPERED SHANK

Articolo	MANDRINI / TOOLHOLDERS	D	B	H
TLD30SK	TC30 / CAT30 / BT30 / ISO30	50	150	160
TLD40SK	TC40 / CAT40 / BT40 / ISO40	63	150	160
TLD50SK	TC50 / CAT50 / BT50 / ISO50	100	180	200



I mandrini sono orientabili in orizzontale e in verticale.

Toolholders are indexable in vertical and horizontal position.

Sono da fissare al banco di lavoro con 4 viti (non fornite).

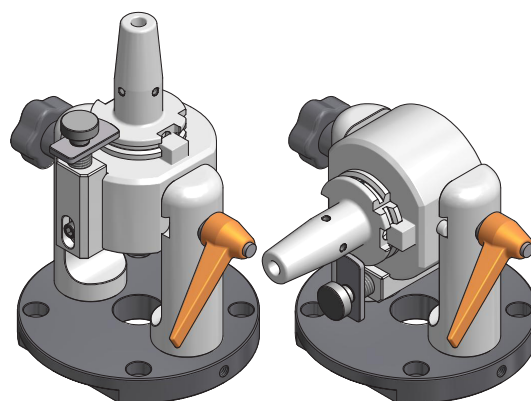
Must be fixed to a bench with 4 bolts (not included).

Nessun contatto con la cava "V" della flangia.

No contact with "V" of the flange.

Adatti per attacchi a doppio contatto.

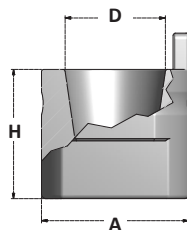
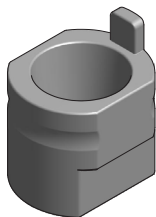
Suitable for double contact shank.



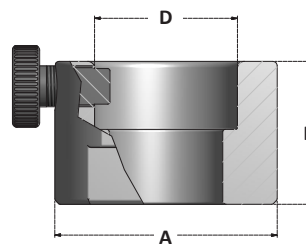
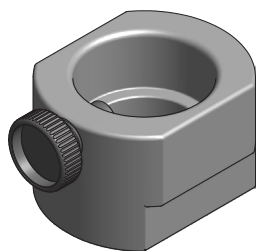


SUPPORTI DI MONTAGGIO PER MORSE

TOOL ASSEMBLY DEVICES FOR VISES

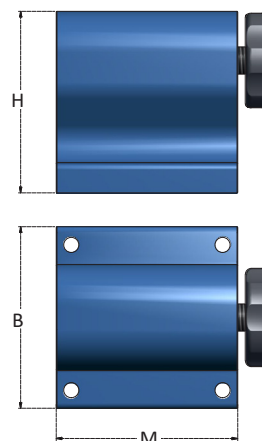
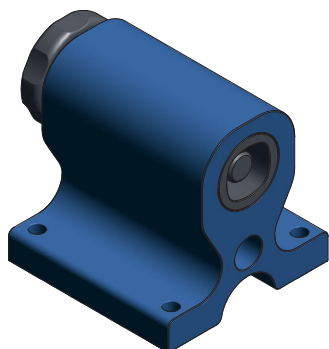


Articolo	MANDRINI / TOOLHOLDERS	D	A	H
THF30	ISO30 / NMTB30 / TC30 / CAT30 / BT30	31,75	50	43
THF40	ISO40 / NMTB40 / TC40 / CAT40 / BT40	44,45	65	57
THF50	ISO50 / NMTB50 / TC50 / CAT50 / BT50	69,85	99	80



Articolo	MANDRINI / TOOLHOLDERS	D	A	H
THF63	HSK63-A- B- D- T	63	98	63
THF100	HSK100-A- B- D- T	100	128	75

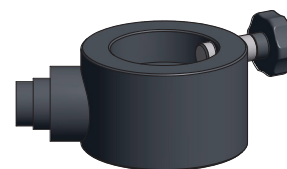


**SUPPORTO DI MONTAGGIO MODULARI**
MODULAR ASSEMBLY DEVICES**BASE***BASE*

Articolo	H	B	M
TBT.MD	120	120	120

SEDI MANDRINO*CHUCK HOLDERS*

Articolo	MANDRINI TOOLHOLDERS
MD.SK30	TC30 / BT30
MD.SK40	TC40 / BT40
MD.SK50	TC50 / BT50
MD.HSK40A	HSK40A-B-D-T
MD.HSK50A	HSK50A-B-D-T
MD.HSK63A	HSK63A-B-D-T
MD.HSK80A	HSK80A-B-D-T
MD.HSK100A	HSK100A-B-D-T
MD.VDI20	VDI20
MD.VDI30	VDI30
MD.VDI40	VDI40
MD.VDI50	VDI50
MD.PSC32	CPT32
MD.PSC40	CPT40
MD.PSC50	CPT50
MD.PSC63	CPT63
MD.PSC80	CPT80



I mandrini sono orientabili in 4 posizioni a 90°.

Toolholders are indexable in 4x90° positions.

I mandrini sono bloccati sulla flangia.

Toolholders are clamped on the flange.

Nessun contatto con l'attacco conico del mandrino.

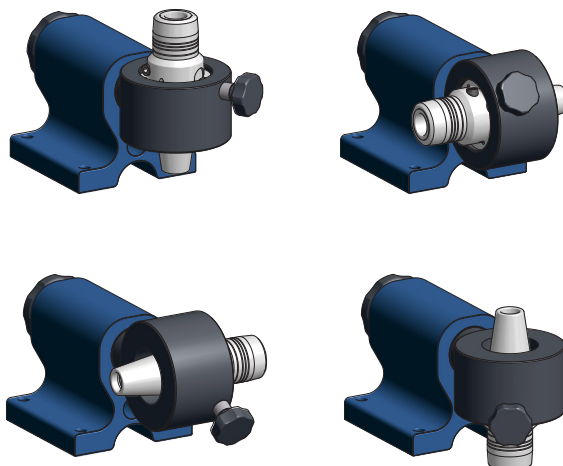
No contact with tool taper shank.

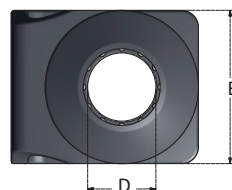
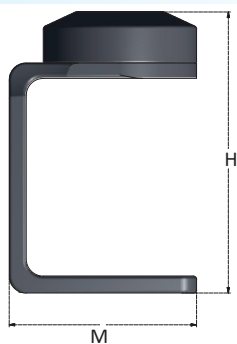
Sono da fissare al banco di lavoro con 4 viti (non fornite).

Must be fixed to a bench with 4 bolts (not included).

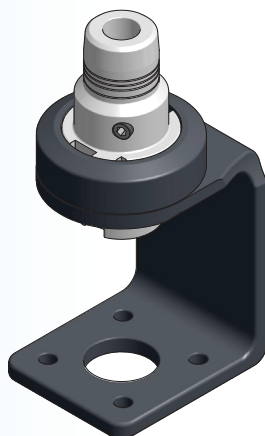
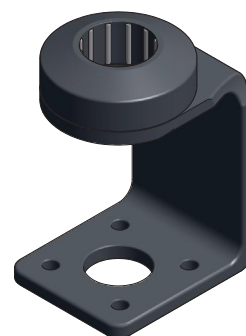
Non adatti per attacchi a doppio contatto.

Not suitable for double contact shank.



**SUPPORTI DI MONTAGGIO A RULLI**
ROLLER CLAMPING ASSEMBLY DEVICES

Articolo	MANDRINI / TOOLHOLDERS	D	H	B	M
TBRL25	HSK25	25	132	90	100
TBRL30		30	132	90	100
TBRL32	HSK32 / CPT32	32	162	99	113
TBRL40	HSK40 / CPT40	40	162	99	113
TBRL46	BT30 / WD30C	46	162	99	113
TBRL50	HSK50 / TC30 / ISO30 / WD30 / CPT50	50	162	99	113
TBRL58	WD30U	58	162	99	113
TBRL63	HSK63 / KM63 / CPT63 / BT40 / TC40 / CAT40	63	162	99	113
TBRL80	HSK80 / CPT80	80	240	148	170
TBRL97,5	TC50 / ISO50	97,5	240	148	170
TBRL100	HSK100 / BT50	100	240	148	170



I mandrini sono bloccati sulla flangia dai rulli bidirezionali.

Toolholders are clamped on the flange by two-way needle rollers.

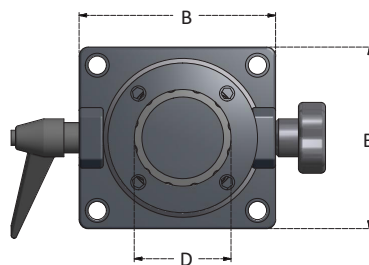
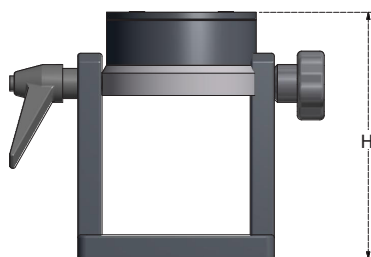
Nessun contatto con l'attacco conico del mandrino.

No contact with the tool taper shank.

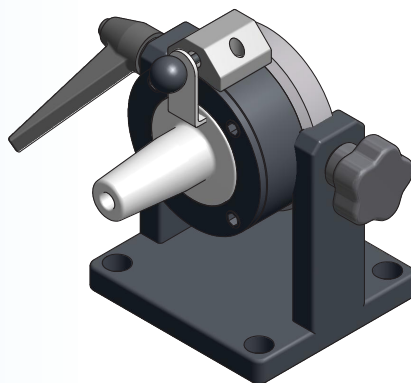
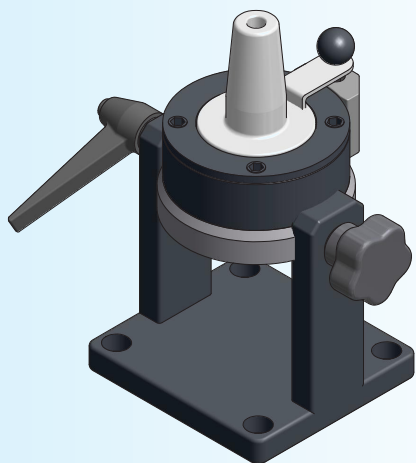
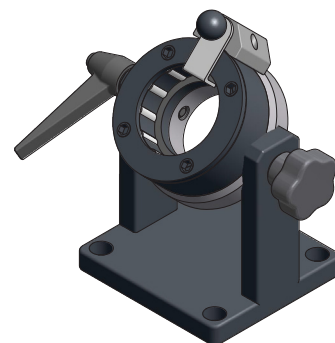
Sono da fissare al banco di lavoro con 4 viti (non fornite).

Must be fixed to a bench with 4 bolts (not included).



**SUPPORTI DI MONTAGGIO A RULLI ORIENTABILI**
INDEXABLE ROLLER CLAMPING ASSEMBLY DEVICES

Articolo	MANDRINI / TOOLHOLDERS	D	H	B
TBRL40OR	HSK40 / CPT40	40	162	150
TBRL46OR	BT30 / WD30C	46	162	150
TBRL50OR	HSK50 / TC30 / ISO30 / WD30 / CPT50	50	162	150
TBRL63OR	HSK63 / KM63 / CPT63 / BT40 / TC40 / CAT40	63	162	150
TBRL97,5OR	TC50 / ISO50	97,5	240	150
TBRL100OR	HSK100 / BT50	100	240	150



I mandrini sono orientabili in orizzontale e in verticale.

Toolholders are indexable in vertical and horizontal position.

I mandrini sono bloccati sulla flangia dai rulli bidirezionali.

Toolholders are clamped on the flange by two-way needle rollers.

Nessun contatto con l'attacco conico del mandrino.

No contact with the tool taper shank.

Sono da fissare al banco di lavoro con 4 viti (non fornite).

Must be fixed to a bench with 4 bolts (not included).

