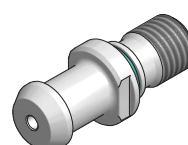
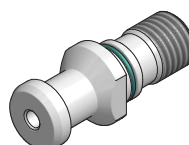
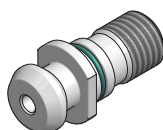
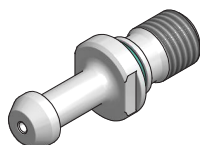
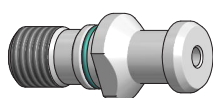


**TIRANTI**

PULL STUDS

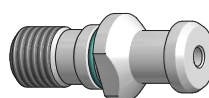


FILETTO THREAD	Sforzo di chiusura Torque
<b>M12</b>	2÷2,4 Kgm
<b>M16</b>	6÷7,8 Kgm
<b>M24</b>	20÷24 Kgm

**DIN69872**

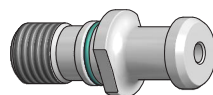
PS.DIN

PAG. 235

**KITAMURA**

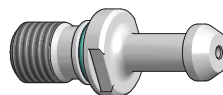
PS.KIT

PAG. 243

**ISO7388/2A**

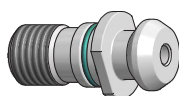
PS.TC

PAG. 236

**MITSUI SEIKI**

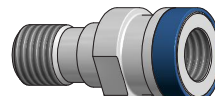
PS.MIT

PAG. 244

**ISO7388/2B**

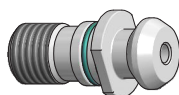
PS.CAT

PAG. 237

**OTT**

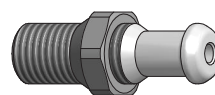
PS.OTT

PAG. 245

**MAZAK**

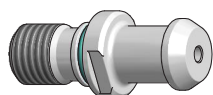
PS.MZ

PAG. 238

**C.B. FERRARI**

PS.CBF

PAG. 246

**JIS-B 6339**

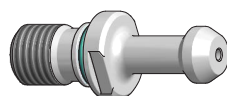
PS.JS

PAG. 239

**ALBERTI / COLOMBO****BIESSE****CMS****CSM**

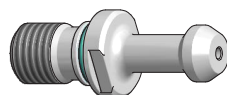
PS.WD

PAG. 247

**MAS403BT**

PS.BT

PAG. 240

**HURCO**

PS.BT HC

PAG. 242

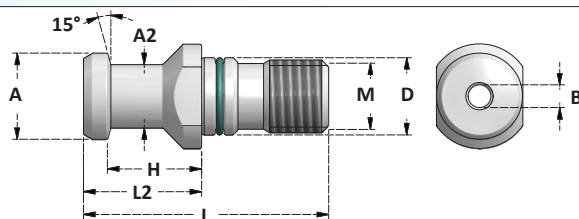
**SEDE CHIP A RICHIESTA SU TUTTI I TIRANTI SENZA FORO**

CHIP HOLE ON REQUEST ON PULL STUDS WITHOUT HLE

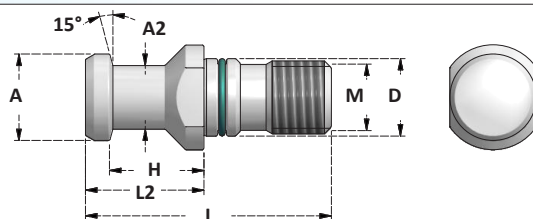
**TIRANTI A DISEGNO O CON FILETTO A POLLICI FORNIBILI A RICHIESTA**

SPECIAL PULL STUDS OR WITH INCH THREAD CAN BE SUPPLIED ON REQUEST

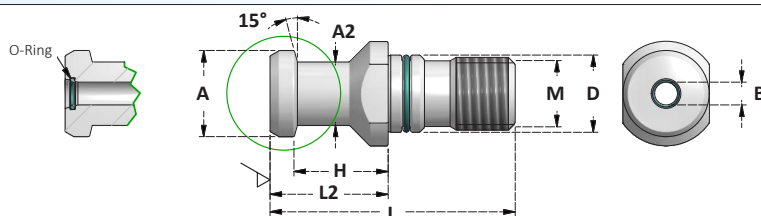


**TIRANTI DIN69872***PULL STUDS DIN69872***TIRANTI DIN69872A FORATI***PULL STUDS DIN69872A WITH COOLANT BORE*

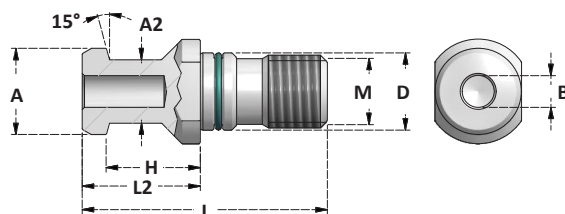
Articolo	M	A	H±0,05	D	L	B	A2	L2	CONO TAPER
<b>PS.DIN30F</b>	* M12	13	19	13	44	2,5	9	24	30
<b>PS.DIN40F</b>	M16	19	20	17	54	7	14	26	40
<b>PS.DIN50F</b>	M24	28	25	25	74	11,5	21	34	50

\* Senza O-Ring  
Without O-Ring**TIRANTI DIN69872A SENZA FORO***PULL STUDS DIN69872A WITHOUT COOLANT BORE*

Articolo	M	A	H±0,05	D	L	B	A2	L2	CONO TAPER
<b>PS.DIN30SF</b>	* M12	13	19	13	44	/	9	24	30
<b>PS.DIN40SF</b>	M16	19	20	17	54	/	14	26	40
<b>PS.DIN50SF</b>	M24	28	25	25	74	/	21	34	50

\* Senza O-Ring  
Without O-Ring**TIRANTI CON DOPPIO O-RING PER REFRIGERANTE AD ALTA PRESSIONE***PULL STUDS WITH DOUBLE O-RING FOR HIGH PRESSION COOLANT*

Articolo	M	A	H±0,05	D	L	B	A2	L2	CONO TAPER
<b>PS.DIN40.2OR</b>	M16	19	20	17	54	7	9	26	40
<b>PS.DIN40.2OR-BT</b>	M16	19	23	17	54	7	14	29	40
<b>PS.DIN50.2OR</b>	M24	28	25	25	74	11,5	21	34	50

**TIRANTI 69872B SEMIFORATI***PULL STUDS 69872B WITH HALF BORE*

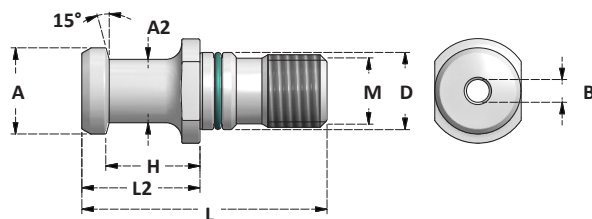
Articolo	M	A	H±0,05	D	L	B	A2	L2	CONO TAPER
<b>PS.DIN40B</b>	M16	19	20	17	54	7	14	26	40
<b>PS.DIN50B</b>	M24	28	25	25	74	11,5	21	34	50

ACCESSORI - ACCESSORIES





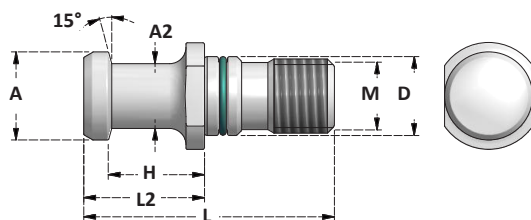
### TIRANTI ISO 7388/2A PULL STUDS ISO 7388/2A



#### TIRANTI ISO7388/2A FORATI PULL STUDS ISO7388/2A WITH COOLANT BORE

Articolo	M	A	H±0,05	D	L	B	A2	L2	CONO TAPER
PS.TC30F	* M12	12	19	13	44	4	8	24	30
PS.TC40F	M16	19	20	17	54	7	14	26	40
PS.TC50F	M24	28	25	25	74	11,5	21	34	50

\* Senza O-Ring  
Without O-Ring



#### TIRANTI ISO7388/2A SENZA FORO PULL STUDS ISO7388/2A WITHOUT COOLANT BORE

Articolo	M	A	H±0,05	D	L	B	A2	L2	CONO TAPER
PS.TC30SF	* M12	12	19	13	44	/	8	24	30
PS.TC40SF	M16	19	20	17	54	/	14	26	40
PS.TC50SF	M24	28	25	25	74	/	21	34	50

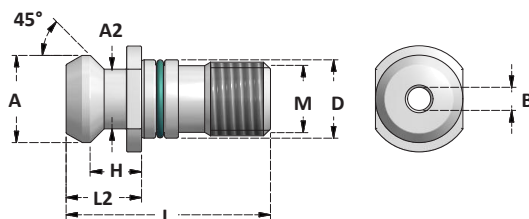
\* Senza O-Ring  
Without O-Ring





## TIRANTI ISO 7388/2B

PULL STUDS ISO7388/2B

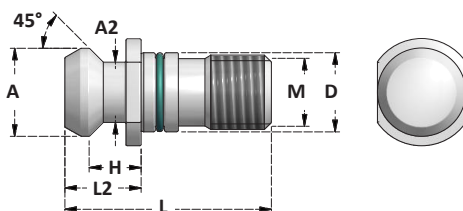


### TIRANTI ISO7388/2B FORATI

PULL STUDS ISO7388/2B WITH COOLANT BORE

Articolo	M	A	H±0,05	D	L	B	A2	L2	CONO TAPER
PS.CAT30F	* M12	13,35	8,15	12,5	34	4	9,3	11,8	30
PS.CAT40F	M16	18,95	11,15	17	44,5	7	12,95	16,4	40
PS.CAT50F	M24	29,1	17,95	25	65,5	11,5	19,6	25,55	50

\* Senza O-Ring  
Without O-Ring



### TIRANTI ISO7388/2B SENZA FORO

PULL STUDS ISO7388/2B WITHOUT COOLANT BORE

Articolo	M	A	H±0,05	D	L	B	A2	L2	CONO TAPER
PS.CAT30SF	* M12	13,35	8,15	12,5	34	/	9,3	11,8	30
PS.CAT40SF	M16	18,95	11,15	17	44,5	/	12,95	16,4	40
PS.CAT50SF	M24	29,1	17,95	25	65,5	/	19,6	25,55	50

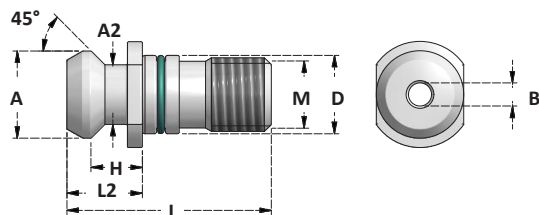
\* Senza O-Ring  
Without O-Ring

ACCESSORI - ACCESSORIES





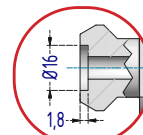
## TIRANTI MAZAK MAZAK PULL STUDS



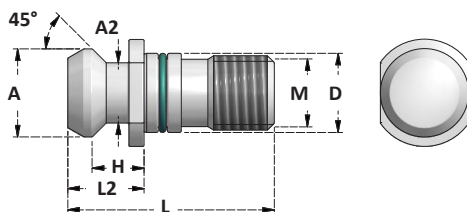
### TIRANTI MAZAK FORATI

PULL STUDS MAZAK WITH COOLANT BORE

Articolo	M	A	H±0,05	D	L	B	A2	L2	CONO TAPER
<b>PS.CAT40.MZ1F</b>	M16	18,8	11,17	17	41,25	7	12,45	16,25	40
<b>PS.CAT40.MZ2F</b>	M16	18,8	14,02	17	44,1	7	12,45	19,1	40
<b>PS.CAT50.MZ3F</b> *	M24	28,95	17,58	25	65,2	10	20,83	25,2	50
<b>PS.CAT50.MZ4F</b> *	M24	28,95	17,78	25	65,4	10	20,83	25,4	50



\* Con sede chip  
With chip slot

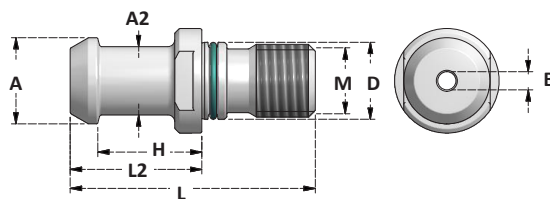


### TIRANTI MAZAK SENZA FORO

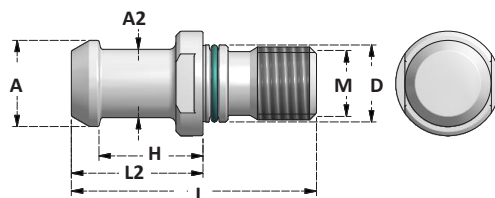
PULL STUDS MAZAK WITHOUT COOLANT BORE

Articolo	M	A	H±0,05	D	L	B	A2	L2	CONO TAPER
<b>PS.CAT40.MZ1SF</b>	M16	18,8	11,17	17	41,25	/	12,45	16,25	40
<b>PS.CAT40.MZ2SF</b>	M16	18,8	14,02	17	44,1	/	12,45	19,1	40



**TIRANTI JIS-B 6339***PULL STUDS JIS-B 6339***TIRANTI JIS-B 6339 FORATI***PULL STUDS JIS-B 6339 WITH COOLANT BORE*

Articolo	M	A	H±0,05	D	L	B	A2	L2	CONO TAPER
<b>PS.JS30.F3</b> *	M12	12	18,4	12,5	43	3	8	23,4	30
<b>PS.JS40.F3</b>	M16	19	23	17	54	3	14	29	40
<b>PS.JS40.F4</b>	M16	19	23	17	54	4	14	29	40
<b>PS.JS40.F5</b>	M16	19	23	17	54	5	14	29	40
<b>PS.JS40.F554</b>	M16	19	23	17	54	5,5-4	14	29	40
<b>PS.JS40.F6</b>	M16	19	23	17	54	6	14	29	40
<b>PS.JS40.F7</b>	M16	19	23	17	54	7	14	29	40
<b>PS.JS50.F10</b>	M24	28	25	25	74	10	21	34	50

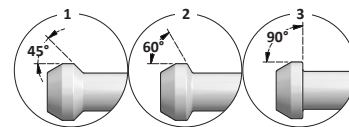
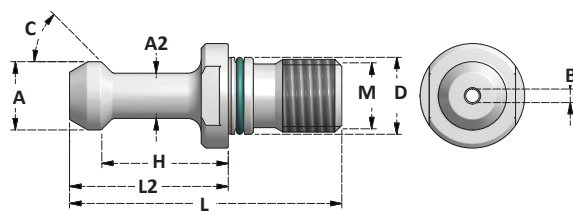
\* Senza O-Ring  
Without O-Ring**TIRANTI JIS-B 6339 SENZA FORO***PULL STUDS JIS-B 6339 WITHOUT COOLANT BORE*

Articolo	M	A	H±0,05	D	L	B	A2	L2	CONO TAPER
<b>PS.JS30SF</b> *	M12	12	18,4	12,5	43	/	8	23,4	30
<b>PS.JS40SF</b>	M16	19	23	17	54	/	14	29	40
<b>PS.JS50SF</b>	M24	28	25	25	74	/	21	34	50

\* Senza O-Ring  
Without O-Ring

ACCESSORI - ACCESSORIES

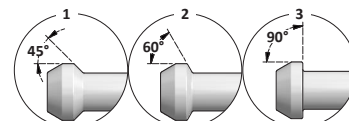
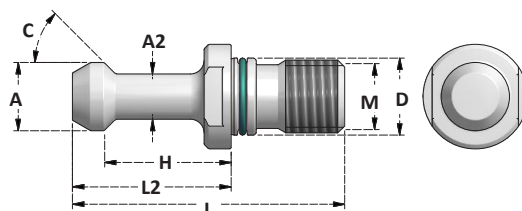


**TIRANTI MAS403BT**  
*PULL STUDS MA403BT***TIRANTI MAS403BT FORATI***PULL STUDS MAS403BT WITH COOLANT BORE*

Articolo	M	C	A	H±0,05	D	L	B	A2	L2	CONO TAPER
<b>PS.BT30.1F</b>	* M12	45°	11	18	12,5	43	2,5	7	23	30
<b>PS.BT30.2F</b>	* M12	60°	11	18	12,5	43	2,5	7	23	30
<b>PS.BT30.3F</b>	* M12	90°	11	18	12,5	43	2,5	7	23	30
<b>PS.BT40.1F</b>	M16	45°	15	28	17	60	3	10	35	40
<b>PS.BT40.2F</b>	M16	60°	15	28	17	60	3	10	35	40
<b>PS.BT40.3F</b>	M16	90°	15	28	17	60	3	10	35	40
<b>PS.BT50.1F</b>	M24	45°	23	35	25	85	6	17	45	50
<b>PS.BT50.2F</b>	M24	60°	23	35	25	85	6	17	45	50
<b>PS.BT50.3F</b>	M24	90°	23	35	25	85	6	17	45	50

\* Senza O-Ring  
Without O-Ring**TIRANTI MAS403BT FORATI CON TESTA RETTIFICATA***PULL STUDS MAS403BT WITH COOLANT BORE WITH GRINDED HEAD*

Articolo	M	C	A	H±0,05	D	L	B	A2	L2	CONO TAPER
<b>PS.BT50.2F.OKU</b>	M24	60°	23	35	25	85	6	17	45	50

**TIRANTI MAS403BT SENZA FORO***PULL STUDS MAS403BT WITHOUT COOLANT BORE*

Articolo	M	C	A	H±0,05	D	L	B	A2	L2	CONO TAPER
<b>PS.BT30.1SF</b>	* M12	45°	11	18	12,5	43	/	7	23	30
<b>PS.BT30.2SF</b>	* M12	60°	11	18	12,5	43	/	7	23	30
<b>PS.BT30.3SF</b>	* M12	90°	11	18	12,5	43	/	7	23	30
<b>PS.BT40.1SF</b>	M16	45°	15	28	17	60	/	10	35	40
<b>PS.BT40.2SF</b>	M16	60°	15	28	17	60	/	10	35	40
<b>PS.BT40.3SF</b>	M16	90°	15	28	17	60	/	10	35	40
<b>PS.BT50.1SF</b>	M24	45°	23	35	25	85	/	17	45	50
<b>PS.BT50.2SF</b>	M24	60°	23	35	25	85	/	17	45	50
<b>PS.BT50.3SF</b>	M24	90°	23	35	25	85	/	17	45	50

\* Senza O-Ring  
Without O-Ring

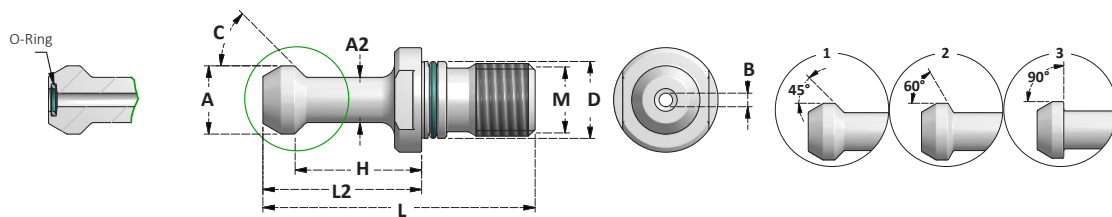
ACCESSORI - ACCESSORIES





# TIRANTI MAS403BT

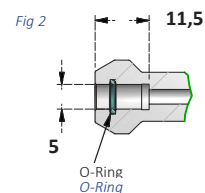
*PULL STUDS MAS403BT*



## TIRANTI CON DOPPIO O-RING PER REFRIGERANTE AD ALTA PRESSIONE

*PULL STUDS WITH DOUBLE O-RING FOR HIGH PRESSION COOLANT*

Articolo	M	C	A	H±0,05	D	L	B	A2	L2	CONO TAPER
PS.BT40.1.2OR	M16	45°	15	28	17	60	3	10	35	40
PS.BT40.1.2OR-5	M16	45°	15	28	17	60	3	10	35	40
PS.BT40.2.2OR	M16	60°	15	28	17	60	3	10	35	40
PS.BT50.1.2OR	M24	45°	23	35	25	85	6	17	45	50
PS.BT50.2.2OR	M24	60°	23	35	25	85	6	17	45	50
PS.BT50.3.2OR	M24	90°	23	35	25	85	6	17	45	50

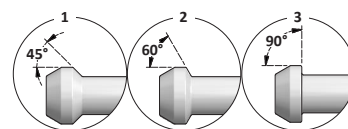
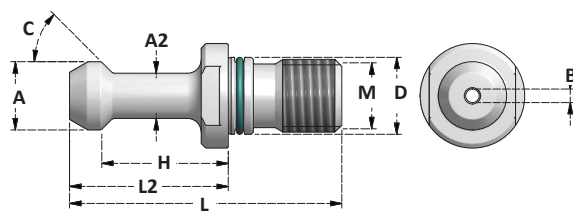






## TIRANTI HURCO

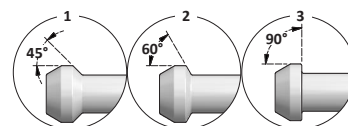
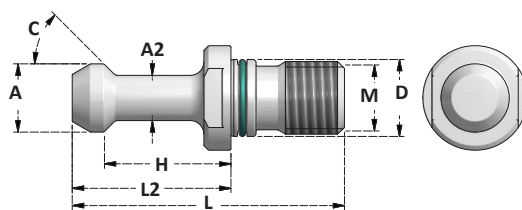
*PULL STUDS HURCO*



### TIRANTI HURCO FORATI

*PULL STUDS HURCO WITH COOLANT BORE*

Articolo	M	C	A	H±0,05	D	L	B	A2	L2	CONO TAPER
<b>PS.BT40.HC1F</b>	M16	45°	15	25,15	17	57,15	3	10	32,15	40
<b>PS.BT40.HC2F</b>	M16	60°	15	25,15	17	57,15	3	10	32,15	40
<b>PS.BT40.HC3F</b>	M16	90°	15	25,15	17	57,15	3	10	32,15	40



### TIRANTI HURCO SENZA FORO

*PULL STUDS HURCO WITHOUT COOLANT BORE*

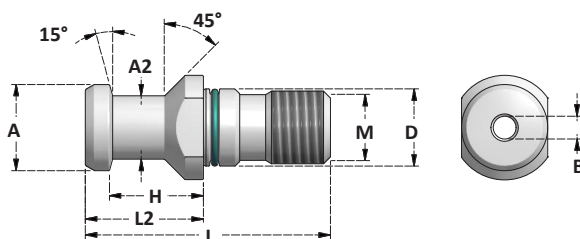
Articolo	M	C	A	H±0,05	D	L	B	A2	L2	CONO TAPER
<b>PS.BT40.HC1SF</b>	M16	45°	15	25,15	17	57,15	/	10	32,15	40
<b>PS.BT40.HC2SF</b>	M16	60°	15	25,15	17	57,15	/	10	32,15	40
<b>PS.BT40.HC3SF</b>	M16	90°	15	25,15	17	57,15	/	10	32,15	40





## TIRANTI KITAMURA

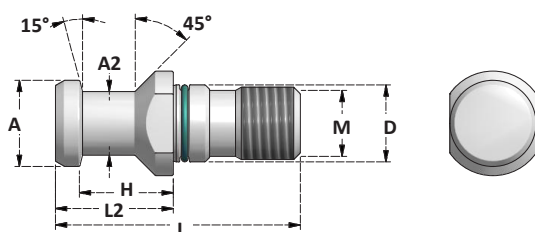
*PULL STUDS KITAMURA*



### TIRANTI KITAMURA FORATI

*PULL STUDS KITAMURA WITH COOLANT BORE*

Articolo	M	A	H±0,05	D	L	B	A2	L2	CONO TAPER
<b>PS.KIT40F</b>	M16	19	23	17	54	7	14	29	40

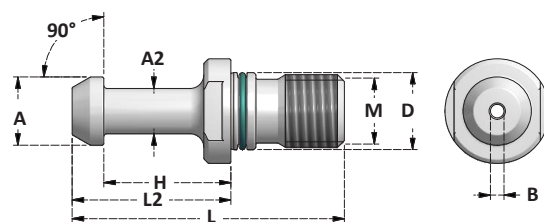


### TIRANTI KITAMURA SENZA FORO

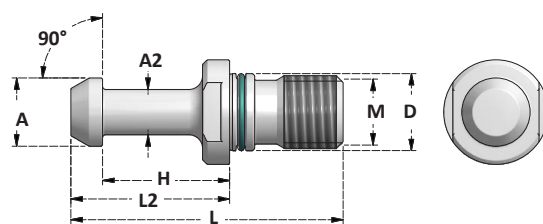
*PULL STUDS KITAMURA WITHOUT COOLANT BORE*

Articolo	M	C	A	H±0,05	D	L	B	A2	L2	CONO TAPER
<b>PS.KIT40SF</b>	M16	15°	19	23,2	17	57,2	/	14	32,2	40



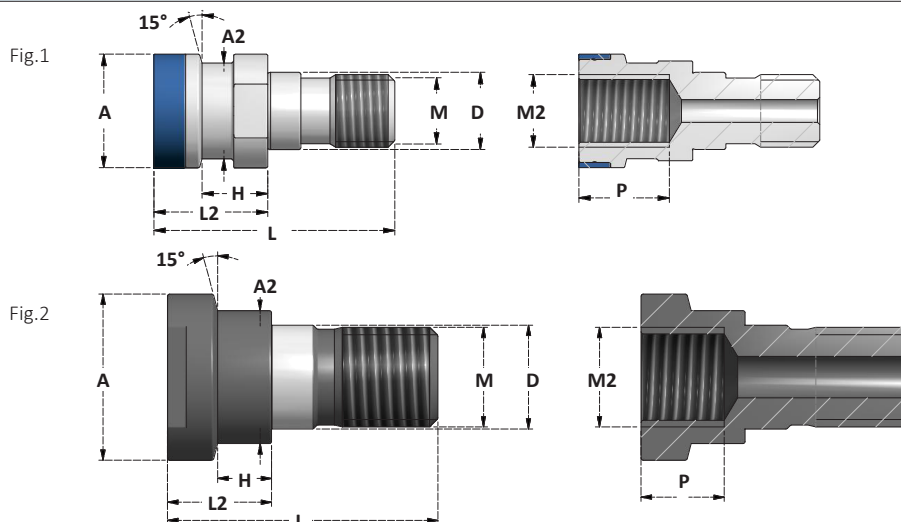
**TIRANTI MITSUI SEIKI**  
*PULL STUDS MITSUI SEIKI***TIRANTI MITSUI SEIKI FORATI**  
*PULL STUDS MITSUI SEIKI WITH COOLANT BORE*

Articolo	M	A	H±0,05	D	L	B	A2	L2	CONO TAPER
<b>PS.MIT40F</b>	M16	15	18	17	50	3	10	25	40
<b>PS.MIT50F</b>	M24	24	23	25	71	8	18	31	50

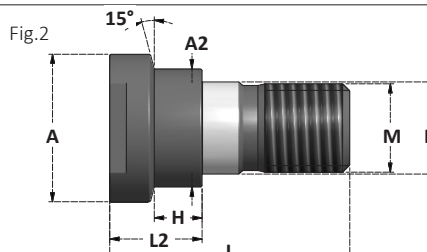
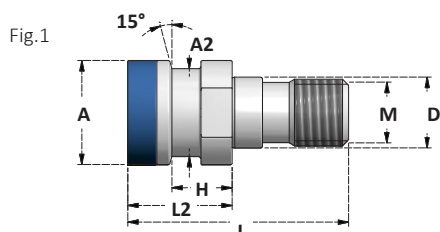
**TIRANTI MITSUI SEIKI SENZA FORO**  
*PULL STUDS MITSUI SEIKI WITHOUT COOLANT BORE*

Articolo	M	A	H±0,05	D	L	B	A2	L2	CONO TAPER
<b>PS.MIT40SF</b>	M16	15	18	17	50	/	10	25	40
<b>PS.MIT50SF</b>	M24	24	23	25	71	/	18	31	50



**TIRANTI OTT**  
*OTT PULL STUDS*

**TIRANTI OTT FORATI**
*OTT PULL STUDS WITH COOLANT BORE*

Articolo	M	A	H±0,05	D	L	M2	A2	L2	CONO TAPER	P	Fig
<b>PS.OTT40.TCF</b>	M16	25	14,52	17	53,1	M16	21,1	25,1	TC40	20	Fig.1
<b>PS.OTT40.BTF</b>	M16	25	17,54	17	56	M16	21,1	28	BT40	20	Fig.1
<b>PS.OTT50.TBF</b>	M24	39,6	14	25	65	M24	32	25	TC/BT50	20	Fig.2


**TIRANTI OTT NON FORATI**
*OTT PULL STUDS WITHOUT COOLANT BORE*

Articolo	M	A	H±0,05	D	L	M2	A2	L2	CONO TAPER	Fig
<b>PS.OTT40.TCSF</b>	M16	25	14,52	17	53,1	/	21,1	25,1	TC40	Fig.1
<b>PS.OTT40.BTSF</b>	M16	25	17,54	17	56	/	21,1	28	BT40	Fig.1
<b>PS.OTT50.TBSF</b>	M24	39,6	14	25	65	/	32	25	TC/BT50	Fig.2

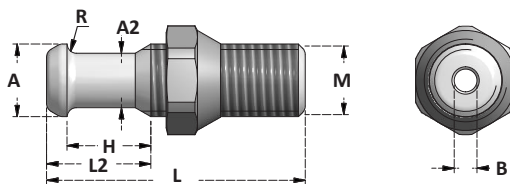
**I CODOLI OTT SERVONO PER MONTARE I MANDRINI TC(DIN69871) E BT(MAS403) SU MACCHINE CON SEDE ISO(DIN2080)**

*OTT PULL STUDS ALLOW TO MOUNT TC(DIN69871) AND BT(MAS403) TOOLHOLDERS ON ISO(DIN2080) MACHINES*





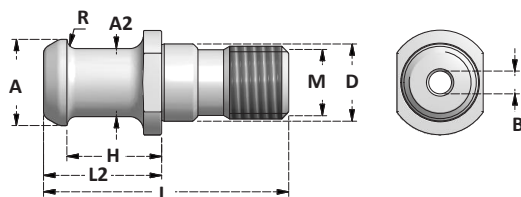
**TIRANTI C.B. FERRARI**  
*PULL STUDS C.B. FERRARI*



**TIRANTI C.B. FERRARI FORATI**  
*PULL STUDS C.B. FERRARI WITH COOLANT BORE*

Articolo	M	R	A	H±0,05	L	B	A2	L2	CONO TAPER
<b>PS.CBF40.050</b>	M16	3,7	16	18,1	57	5	12	23	40

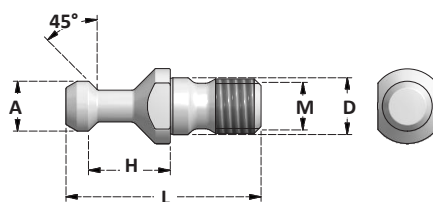
**Dado incluso**  
*Nut included*



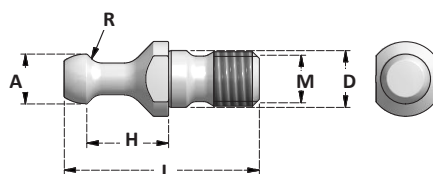
**TIRANTI C.B. FERRARI FORATI**  
*PULL STUDS C.B. FERRARI WITH COOLANT BORE*

Articolo	M	R	A	H±0,05	D	L	B	A2	L2	CONO TAPER
<b>PS.CBF30.051</b>	M12	3,4	12	19,5	13	44	3	8	24	30
<b>PS.CBF40.051</b>	M16	3,7	19	20,31	17	54	5	15	26	40
<b>PS.CBF50.051</b>	M24	4,3	28	25,5	25	74	6	22,2	34	50

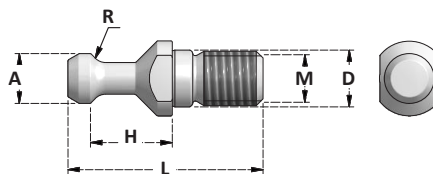


**TIRANTI PER MANDRINI PER LAVORAZIONE DEL LEGNO**  
*PULL STUDS FOR WOODWORKING TOOL HOLDERS***ALBERTI - COLOMBO**

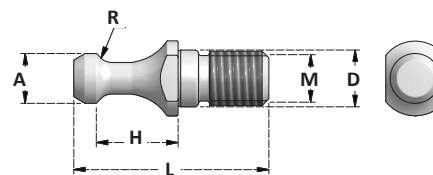
Articolo	M	A	H±0,05	D	L	CONO TAPER
<b>PS.WD30.ALB</b>	M12	12,8	19	13	44	30

**BIESSE**

Articolo	M	R	A	H±0,05	D	L	CONO TAPER
<b>PS.WD30.BS</b>	M12	3,2	12	19	13	44	30

**CMS**

Articolo	M	R	A	H±0,05	D	L	CONO TAPER
<b>PS.WD30.CMS</b>	M12	2,4	12,8	19	11	44	30

**SCM**

Articolo	M	R	A	H±0,05	D	L	CONO TAPER
<b>PS.WD30.SCM</b>	M10	2,3	8,5	18,3	11	42,5	30

